

UK Office

Everest Biotech Ltd

Cherwell Innovation Centre
77 Heyford Park
Upper Heyford
Oxfordshire
OX25 5HD
UK

Enquiries:

info@everestbiotech.com

Sales:

sales@everestbiotech.com

Tech support:

support@everestbiotech.com

Tel: +44 (0)1869 238326

www.everestbiotech.com

**Research Use Only. Not for
diagnostic or therapeutic use.**

EB10135 - Goat Anti-HEY2 Antibody

Size: 100µg specific antibody in 200µl



Target Protein

Principal Names: bHLHb32, cardiovascular basic helix-loop-helix factor 1, CHF1, GRIDLOCK, GRL, hairy/enhancer-of-split related with YRPW motif 2, hairy-related transcription factor 2, HERP1, HESR2, HES-related repressor protein 1, HRT2, MGC10720, OTTHUMP00000017138, HEY2

Official Symbol: HEY2

Accession Number(s): NP_036391.1

Human GeneID(s): [23493](#)

Non-Human GeneID(s): 15214 (mouse), 155430 (rat)

Immunogen

Peptide with sequence HASESTPCRLSTTS, from the internal region of the protein sequence according to NP_036391.1.

Please note the [peptide](#) is available for sale.

Purification and Storage

Purified from goat serum by ammonium sulphate precipitation followed by antigen affinity chromatography using the immunizing peptide.

Supplied at 0.5 mg/ml in Tris saline, 0.02% sodium azide, pH7.3 with 0.5% bovine serum albumin.

Aliquot and store at -20°C. Minimize freezing and thawing.

Applications Tested

Peptide ELISA: antibody detection limit dilution 1:16000.

Western blot: Approx. 30kDa band observed in nuclear lysates of cell lines HeLa and HEK293 and in HEK293 whole cell lysate (calculated MW of 35.8kDa according to NP_036391.1). Recommended concentration: 2-3.5µg/ml. Primary incubation 1 hour at room temperature.

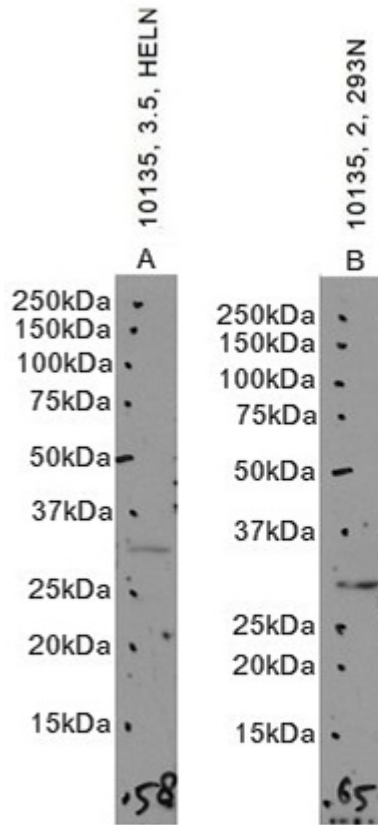
Immunofluorescence: Strong expression of the protein seen in the nuclei and cytoplasm of HEK293 cells. Recommended concentration: 10µg/ml.

Flow Cytometry: Flow cytometric analysis of HEK293 cells. Recommended concentration: 10ug/ml.

Species Reactivity

Tested: Human

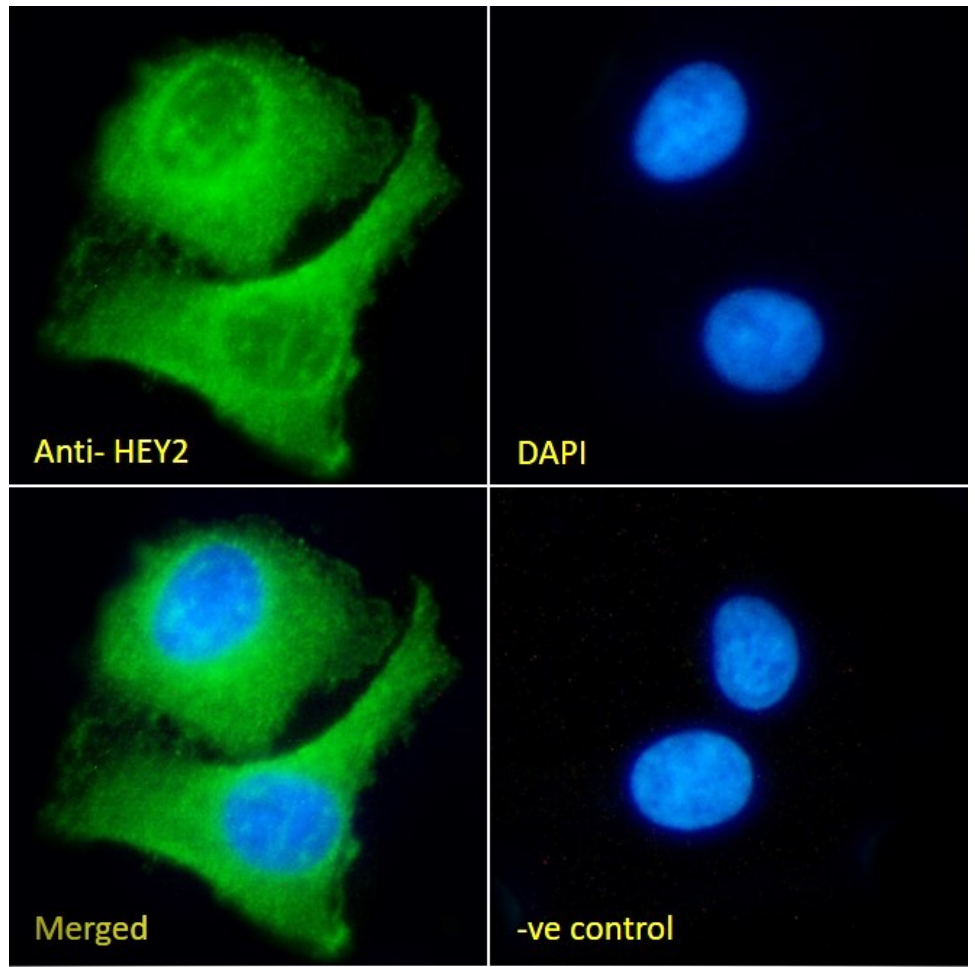
Expected from sequence similarity: Human, Cow



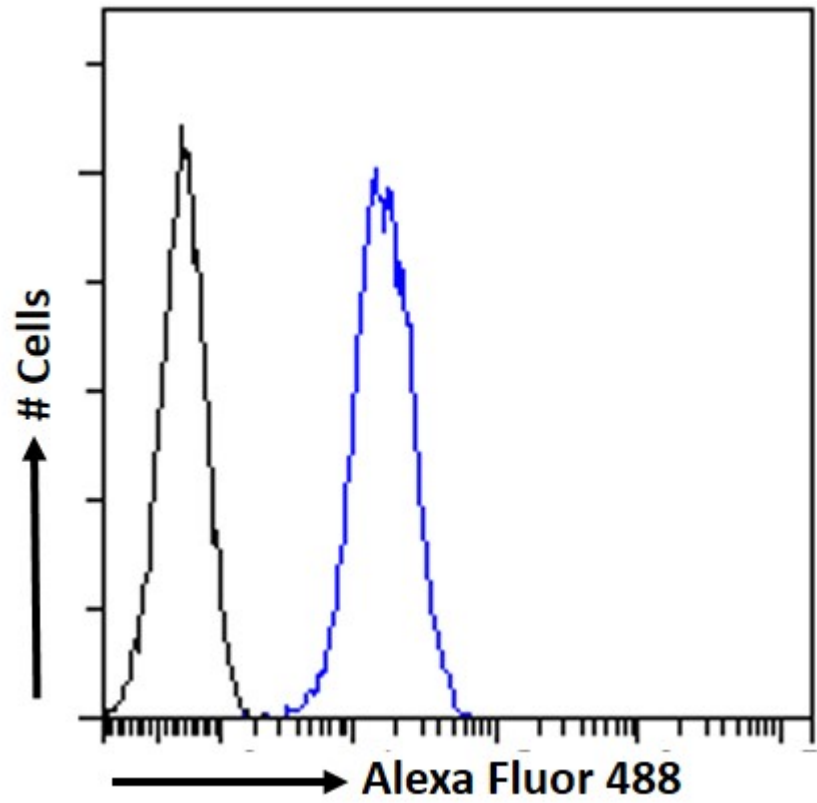
EB10135 optimised QC. Primary incubation 1 hour at room temperature.
 Image A: HeLa nuclear cell lysate at primary Ab concentration 3.5µg/ml. Image B: HEK293 nuclear cell lysate at primary Ab concentration 2µg/ml. (Loaded 35µg protein in RIPA buffer, per lane). Detected by chemiluminescence.



EB10135 optimised QC. Primary incubation 1 hour at room temperature.
Image A: HEK293 cell lysate at primary Ab concentration 2ug/ml. (Loaded 35µg protein in RIPA buffer, per lane). Detected by chemiluminescence.



EB10135 Immunofluorescence analysis of paraformaldehyde fixed HEK293 cells, permeabilized with 0.15% Triton. Primary incubation 1hr (10ug/ml) followed by Alexa Fluor 488 secondary antibody (2ug/ml), showing nuclear and cytoplasmic staining. The nuclear stain is DAPI (blue). Negative control: Unimmunized goat IgG (10ug/ml) followed by Alexa Fluor 488 secondary antibody (2ug/ml).



EB10135 Flow cytometric analysis of paraformaldehyde fixed HEK293 cells (blue line), permeabilized with 0.5% Triton. Primary incubation 1hr (10ug/ml) followed by Alexa Fluor 488 secondary antibody (1ug/ml). IgG control: Unimmunized goat IgG (black line) followed by Alexa Fluor 488 secondary antibody.