



UK Office

Everest Biotech Ltd

Cherwell Innovation Centre
77 Heyford Park
Upper Heyford
Oxfordshire
OX25 5HD
UK

Enquiries:

info@everestbiotech.com

Sales:

sales@everestbiotech.com

Tech support:

support@everestbiotech.com

Tel: +44 (0)1869 238326

Fax: +44 (0)1869 238327

US Office

Everest Biotech c/o Abcore

405 Maple Street, Suite A106
Ramona,
CA 92065
USA

Inquiries:

info@everestbiotech.com

Sales:

usasales@everestbiotech.com

Tech support:

support@everestbiotech.com

Tel: 888-320-4628 (toll-free)

Fax: 888-841-9041

www.everestbiotech.com

**Research Use Only. Not for
diagnostic or therapeutic use.**

EB10789 - Goat Anti-HIF1alpha / MOP1 Antibody

Size: 100µg specific antibody in 200µl



Target Protein

Principal Names: HIF1A, hypoxia inducible factor 1, alpha subunit (basic helix-loop-helix transcription factor), HIF-1alpha, HIF1, HIF1-ALPHA, MOP1, PASD8, bHLHe78, ARNT interacting protein, HIF-1-alpha, OTTHUMP00000179063, PAS domain-containing

Official Symbol: HIF1A

Accession Number(s): NP_001521.1; NP_851397.1

Human GeneID(s): [3091](#)

Non-Human GeneID(s): 15251 (mouse), 29560 (rat)

Important Comments: This antibody is expected to recognize both reported isoforms (NP_001521.1; NP_851397.1). This antibody is NOT expected to cross-react with EPAS1 (GeneID 2034).

Immunogen

Peptide with sequence C-KMTQLFTKVESED, from the internal region of the protein sequence according to NP_001521.1; NP_851397.1.

Please note the [peptide](#) is available for sale.

Purification and Storage

Purified from goat serum by ammonium sulphate precipitation followed by antigen affinity chromatography using the immunizing peptide.

Supplied at 0.5 mg/ml in Tris saline, 0.02% sodium azide, pH7.3 with 0.5% bovine serum albumin.

Aliquot and store at -20°C. Minimize freezing and thawing.

Applications Tested

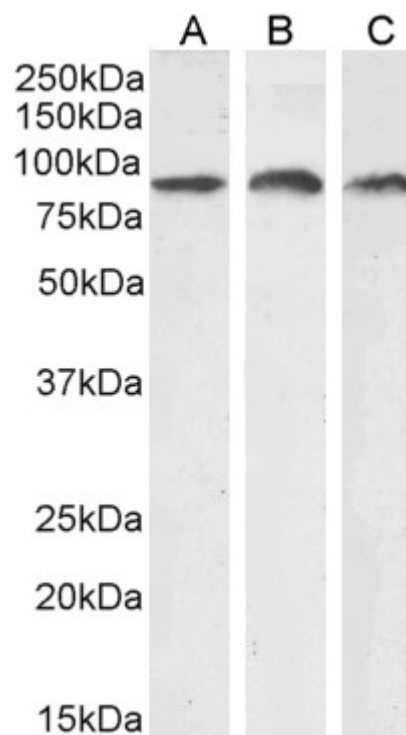
Peptide ELISA: antibody detection limit dilution 1:1000.

Western blot: Approx 90kDa band observed in Human and Mouse Lung and in Human Kidney lysates and approx 85-90kDa in Human Gastrointestinal cancer lysates (calculated MW of 92.7kDa according to Human NP_001521.1, 82.7kDa according to Human NP_851397.1 and 93.7kDa according to Mouse NP_001300848.1). Recommended concentration: 0.3-1µg/ml. Primary incubation 1 hour at room temperature.

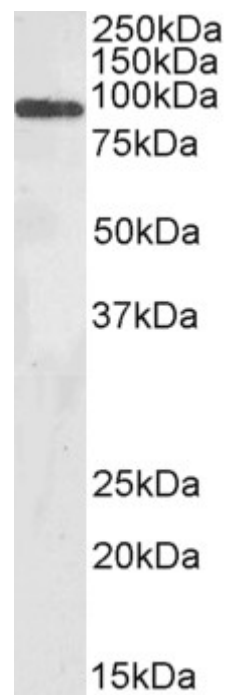
Species Reactivity

Tested: Human, Mouse

Expected from sequence similarity: Human, Mouse, Rat, Dog, Pig, Cow



EB10789 (0.3 μ g/ml) staining of Human Kidney (A), Lung (B) and Gastrointestinal cancer (C) lysate (35 μ g protein in RIPA buffer). Detected by chemiluminescence



EB10789 (0.5 μ g/ml) staining of Mouse Lung lysate (35 μ g protein in RIPA buffer). Detected by chemiluminescence