



International Office

Everest Biotech Ltd

Vector Laboratories, Inc.
6737 Mowry Ave
Newark, CA 94560
United States

Customer Service:

customerservice@vectorlabs.com

Technical Service:

technical@vectorlabs.com

Tel: +1 (800) 227-6666

www.everestbiotech.com

**Research Use Only. Not for
diagnostic or therapeutic use.**

EB06640 - Goat Anti-HIP14L / ZDHHC13 Antibody

Size: 100µg specific antibody in 200µl



Target Protein

Principal Names: ZDHHC13, HIP14L, HIP3RP, FLJ10852, FLJ10941, MGC64994, zinc finger, DHHC domain containing 13, HIP14-like, HIP14-related protein, huntingtin interacting protein HIP3RP, hypothetical protein similar to ankyrin repeat-containing protein AKR1, zinc finger, DHHC-type containing 13

Official Symbol: ZDHHC13

Accession Number(s): NP_061901.2; NP_001001483.1

Human GeneID(s): [54503](#)

Non-Human GeneID(s): 243983 (mouse), 365252 (rat)

Important Comments: This antibody is expected to recognise both reported isoforms (NP_061901.2 and NP_001001483.1).

Immunogen

Peptide with sequence C-FHPAREKVLRSV, from the C Terminus of the protein sequence according to NP_061901.2; NP_001001483.1.

Please note the [peptide](#) is available for sale.

Purification and Storage

Purified from goat serum by ammonium sulphate precipitation followed by antigen affinity chromatography using the immunizing peptide.

Supplied at 0.5 mg/ml in Tris saline, 0.02% sodium azide, pH7.3 with 0.5% bovine serum albumin.

Aliquot and store at -20°C. Minimize freezing and thawing.

Applications Tested

Peptide ELISA: antibody detection limit dilution 1:16000.

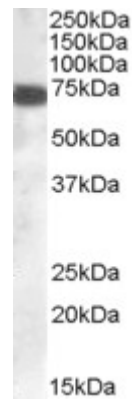
Western blot: Approx. 70kDa band observed in Human Brain (Cerebellum) lysates (calculated MW of 70.9kDa according to NP_061901.2). Recommended concentration: 1-3µg/ml.

IHC: Paraffin embedded Human Lung. Recommended concentration: 5µg/ml.

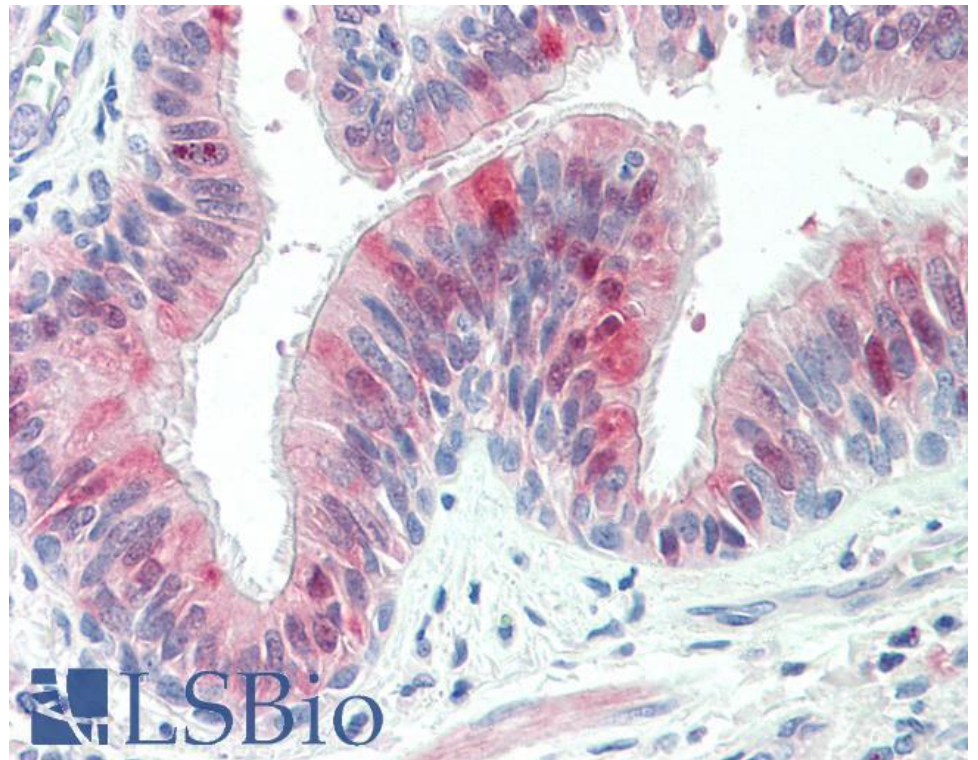
Species Reactivity

Tested: Human

Expected from sequence similarity: Human, Mouse, Rat



EB06640 (0.1µg/ml) staining of Human Cerebellum lysate (35µg protein in RIPA buffer). Primary incubation was 1 hour. Detected by chemiluminescence.



EB06640 (5µg/ml) staining of paraffin embedded Human Lung. Steamed antigen retrieval with citrate buffer pH 6, AP-staining.