



International Office

Everest Biotech Ltd

Vector Laboratories, Inc.
6737 Mowry Ave
Newark, CA 94560
United States

Customer Service:

customerservice@vectorlabs.com

Technical Service:

technical@vectorlabs.com

Tel: +1 (800) 227-6666

www.everestbiotech.com

**Research Use Only. Not for
diagnostic or therapeutic use.**

EB11808 - Goat Anti-histamine H3 receptor Antibody

Size: 100µg specific antibody in 200µl



Target Protein

Principal Names: G protein-coupled receptor 97, GPCR97, G-protein coupled receptor 97, H3R, HH3R, histamine H3 receptor, histamine receptor H3, HRH3, OTTHUMP00000031459

Official Symbol: HRH3

Accession Number(s): NP_009163.2

Human GeneID(s): [11255](#)

Non-Human GeneID(s): 99296 (mouse), 85268 (rat)

Immunogen

Peptide with sequence C-SVTRAVSYRAQQGDT, from the internal region of the protein sequence according to NP_009163.2.

Please note the [peptide](#) is available for sale.

Purification and Storage

Purified from goat serum by ammonium sulphate precipitation followed by antigen affinity chromatography using the immunizing peptide.

Supplied at 0.5 mg/ml in Tris saline, 0.02% sodium azide, pH7.3 with 0.5% bovine serum albumin.

Aliquot and store at -20°C. Minimize freezing and thawing.

Applications Tested

Peptide ELISA: antibody detection limit dilution 1:128000.

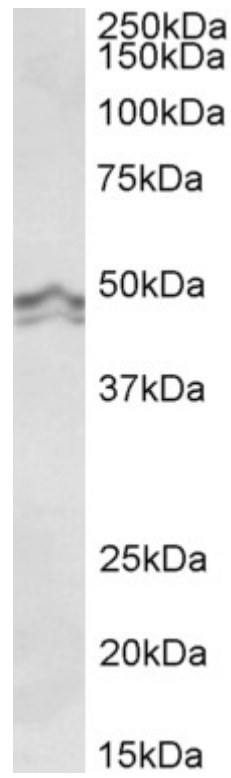
Western blot: Approx 48kDa band observed in lysates of cell line A549 (calculated MW of 48.7kDa according to NP_009163.2). Recommended concentration: 0.1-0.3µg/ml. Primary incubation was 1 hour.

IHC: Paraffin embedded Human Prostate. Recommended concentration: 5µg/ml.

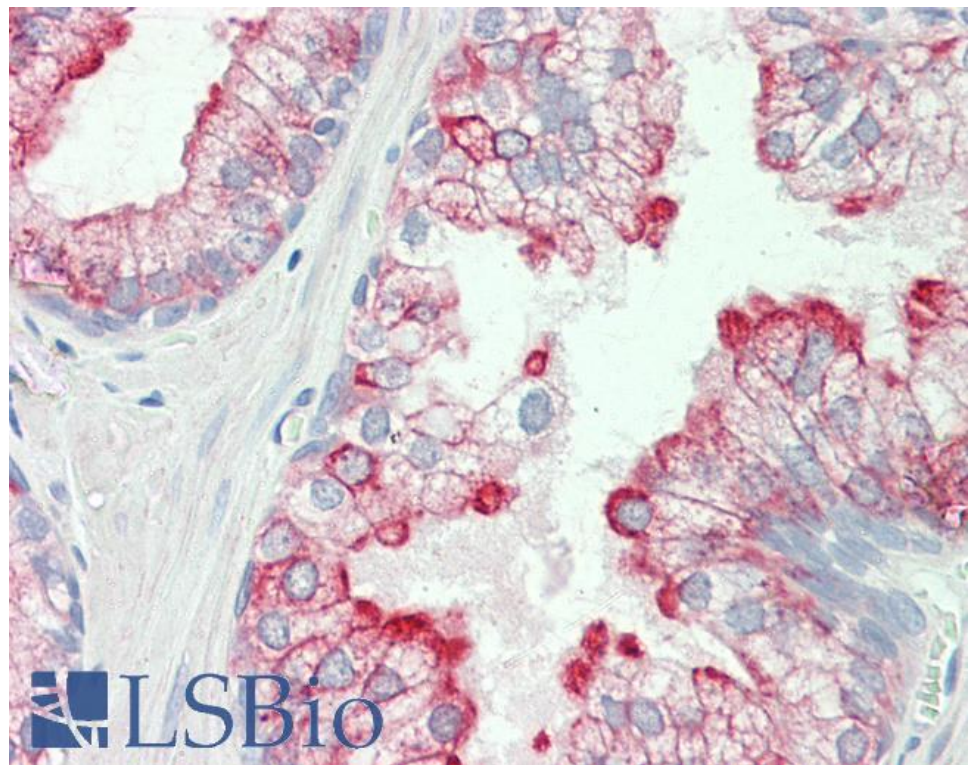
Species Reactivity

Tested: Human

Expected from sequence similarity: Human, Mouse, Rat, Dog, Cow



EB11808 (0.1µg/ml) staining of A549 lysate (35µg protein in RIPA buffer). Detected by chemiluminescence.



EB11808 (5µg/ml) staining of paraffin embedded Human Prostate. Steamed antigen retrieval with citrate buffer pH 6, AP-staining.