



## UK Office

### Everest Biotech Ltd

Cherwell Innovation Centre  
77 Heyford Park  
Upper Heyford  
Oxfordshire  
OX25 5HD  
UK

Enquiries:

[info@everestbiotech.com](mailto:info@everestbiotech.com)

Sales:

[sales@everestbiotech.com](mailto:sales@everestbiotech.com)

Tech support:

[support@everestbiotech.com](mailto:support@everestbiotech.com)

Tel: +44 (0)1869 238326

[www.everestbiotech.com](http://www.everestbiotech.com)

**Research Use Only. Not for  
diagnostic or therapeutic use.**

## EB07699 - Goat Anti-Histamine receptor H1(internal) Antibody

Size: 100µg specific antibody in 200µl



### Target Protein

**Principal Names:** histamine receptor H1, H1-R, HRH1, hisH1, histamine receptor, subclass H1

**Official Symbol:** HRH1

**Accession Number(s):** NP\_000852.1

**Human GeneID(s):** [3269](#)

### Immunogen

Peptide with sequence QQTSVRREDKCETD, from the internal region of the protein sequence according to NP\_000852.1.

Please note the [peptide](#) is available for sale.

### Purification and Storage

Purified from goat serum by ammonium sulphate precipitation followed by antigen affinity chromatography using the immunizing peptide.

Supplied at 0.5 mg/ml in Tris saline, 0.02% sodium azide, pH7.3 with 0.5% bovine serum albumin.

Aliquot and store at -20°C. Minimize freezing and thawing.

### Applications Tested

**Peptide ELISA:** antibody detection limit dilution 1:16000.

**Western blot:** Approx 55kDa band observed in Human Heart lysates (calculated MW of 55.8kDa according to NP\_000852.1). Recommended concentration: 0.5-1.5µg/ml.

**IHC:** In paraffin embedded Human Lung shows membranous staining of epithelial cells in tertiary bronchus and in alveoli. Recommended concentration, 2-4µg/ml.

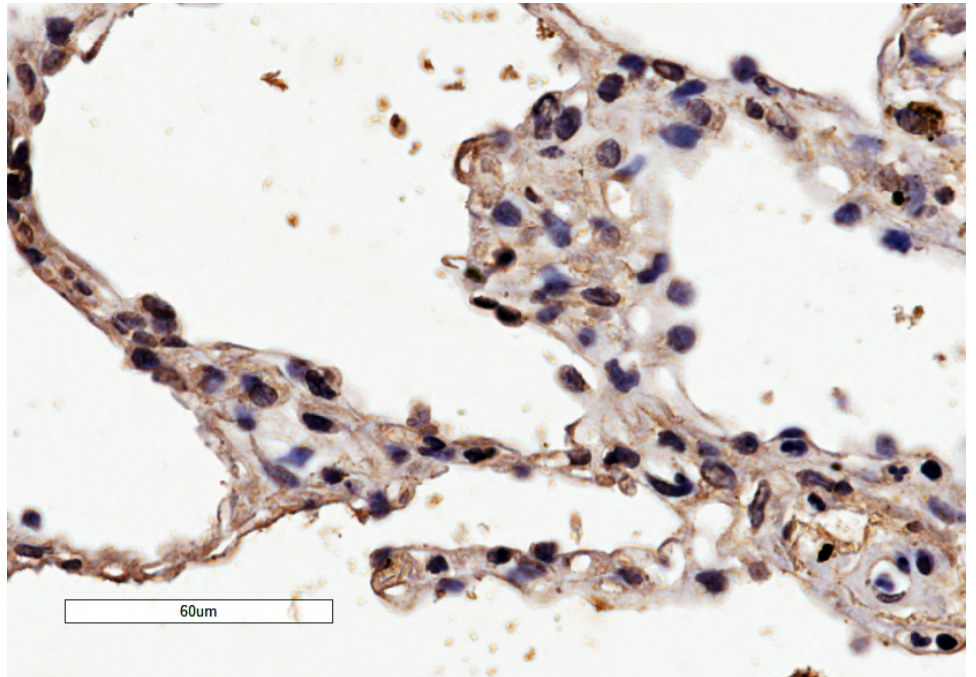
### Species Reactivity

**Tested:** Human

**Expected from sequence similarity:** Human

250kDa  
150kDa  
100kDa  
75kDa  
50kDa  
37kDa  
25kDa  
20kDa  
15kDa

EB07699 (0.5 $\mu$ g/ml) staining of Human Heart lysate (35 $\mu$ g protein in RIPA buffer). Primary incubation was 1 hour. Detected by chemiluminescence.



EB07699 (4 $\mu$ g/ml) staining of paraffin embedded Human Lung. Microwaved antigen retrieval with citrate buffer pH 6, HRP-staining.