



UK Office

Everest Biotech Ltd

Cherwell Innovation Centre
77 Heyford Park
Upper Heyford
Oxfordshire
OX25 5HD
UK

Enquiries:

info@everestbiotech.com

Sales:

sales@everestbiotech.com

Tech support:

support@everestbiotech.com

Tel: +44 (0)1869 238326

Fax: +44 (0)1869 238327

US Office

Everest Biotech c/o Abcore

405 Maple Street, Suite A106
Ramona,
CA 92065
USA

Inquiries:

info@everestbiotech.com

Sales:

usasales@everestbiotech.com

Tech support:

support@everestbiotech.com

Tel: 888-320-4628 (toll-free)

Fax: 888-841-9041

www.everestbiotech.com

**Research Use Only. Not for
diagnostic or therapeutic use.**

EB11020 - Goat Anti-Histamine Receptor H2 (aa309-323) (mouse) Antibody

Size: 100µg specific antibody in 200µl



Target Protein

Principal Names: HRH2, histamine receptor H2, H2R, HH2R, gastric receptor 1, gastric receptor I, histamine H2 receptor, gastric receptor 1, gastric receptor I, H2R, HH2R, histamine H2 receptor, histamine receptor H2, HRH2

Official Symbol: Hrh2

Accession Number(s): NP_001399939.1; NP_001010973.1

Non-Human GeneID(s): 15466 (mouse), 25461 (rat)

Important Comments: This antibody is expected to recognize Mouse NP_001399939.1 iso 3, NP_001010973.1 iso 1 and Rat NP_001010973.1.

Immunogen

Peptide with sequence C-SHNSHKTSRLNNS, from the internal region of the protein sequence according to NP_001399939.1; NP_001010973.1.

Please note the [peptide](#) is available for sale.

Purification and Storage

Purified from goat serum by ammonium sulphate precipitation followed by antigen affinity chromatography using the immunizing peptide.

Supplied at 0.5 mg/ml in Tris saline, 0.02% sodium azide, pH7.3 with 0.5% bovine serum albumin.

Aliquot and store at -20°C. Minimize freezing and thawing.

Applications Tested

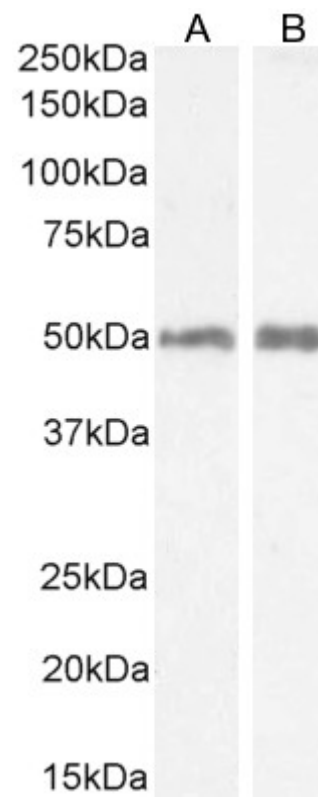
Peptide ELISA: antibody detection limit dilution 1:32000.

Western blot: Approx. 50kDa band observed in Mouse Stomach and Rat Small Intestine lysates (calculated MW of 47.3kDa according to Mouse NP_001399939.1 and 45.2kDa according to Rat NP_001399940.1). Recommended concentration: 0.5-2ug/ml. Primary incubation 1 hour at room temperature.

Species Reactivity

Tested: Mouse, Rat

Expected from sequence similarity: Mouse, Rat



EB11020 (0.5 μ g/ml) staining of Mouse Stomach lysate (A) and (2 μ g/ml) Rat Small Intestine lysate (B) (35 μ g protein in RIPA buffer). Detected by chemiluminescence.