



International Office

Everest Biotech Ltd

Vector Laboratories, Inc.
6737 Mowry Ave
Newark, CA 94560
United States

Customer Service:

customerservice@vectorlabs.com

Technical Service:

technical@vectorlabs.com

Tel: +1 (800) 227-6666

www.everestbiotech.com

**Research Use Only. Not for
diagnostic or therapeutic use.**

EB12828 - Goat Anti-HLA-B (aa132-143) Antibody

Size: 100µg specific antibody in 200µl



Target Protein

Principal Names: HLA-B, major histocompatibility complex, class I, B, AS, HLAB, SPDA1, HLA class I histocompatibility antigen, B alpha chain, MHC Class I HLA heavy chain, MHC HLA-B cell surface glycoprotein, MHC HLA-B transmembrane glycoprotein, MHC class I antigen GN0010

Official Symbol: HLA-B

Accession Number(s): NP_005505.2

Human GeneID(s): [3106](#)

Immunogen

Peptide with sequence C-RLLRGHDQYAYD, from the internal region of the protein sequence according to NP_005505.2.

Please note the [peptide](#) is available for sale.

Purification and Storage

Purified from goat serum by ammonium sulphate precipitation followed by antigen affinity chromatography using the immunizing peptide.

Supplied at 0.5 mg/ml in Tris saline, 0.02% sodium azide, pH7.3 with 0.5% bovine serum albumin.

Aliquot and store at -20°C. Minimize freezing and thawing.

Applications Tested

Peptide ELISA: antibody detection limit dilution 1:128000.

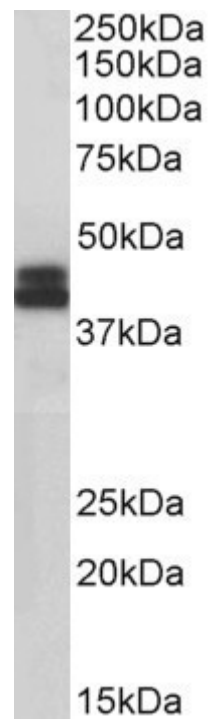
Western blot: Approx 40+45kDa bands observed in lysates of cell line Jurkat (calculated MW of 40.5kDa according to NP_005505.2). The observed 45kDa band corresponds to the glycosylated form. Recommended concentration: 0.1-0.3µg/ml. Primary incubation was 1 hour.

IHC: Paraffin embedded Human Tonsil. Recommended concentration: 2.5µg/ml.

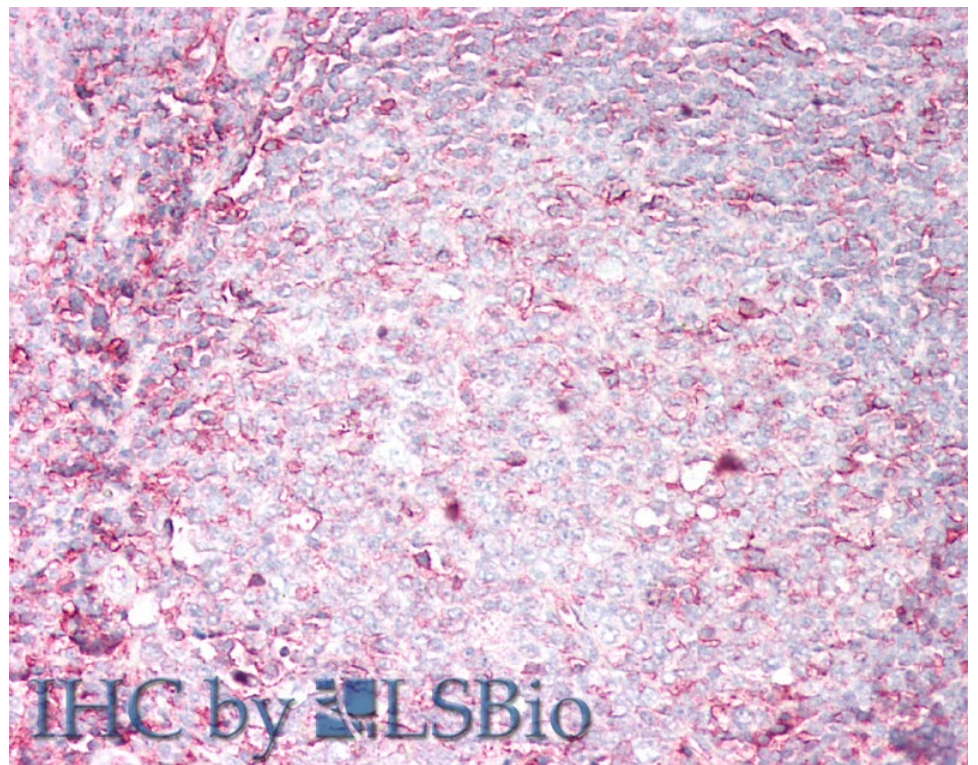
Species Reactivity

Tested: Human

Expected from sequence similarity: Human



EB12828 (0.1µg/ml) staining of Jurkat lysate (35µg protein in RIPA buffer). Detected by chemiluminescence.



EB12828 (2.5µg/ml) staining of paraffin embedded Human Tonsil. Steamed antigen retrieval with citrate buffer pH 6, AP-staining.