



UK Office

Everest Biotech Ltd

Cherwell Innovation Centre
77 Heyford Park
Upper Heyford
Oxfordshire
OX25 5HD
UK

Enquiries:

info@everestbiotech.com

Sales:

sales@everestbiotech.com

Tech support:

support@everestbiotech.com

Tel: +44 (0)1869 238326

www.everestbiotech.com

**Research Use Only. Not for
diagnostic or therapeutic use.**

EB05594 - Goat Anti-HMG20A Antibody

Size: 100µg specific antibody in 200µl



Target Protein

Principal Names: HMG20A, high-mobility group 20A, FLJ10739, HMGX1, HMGXB1, HMG box domain containing 1

Official Symbol: HMG20A

Accession Number(s): NP_060670.1

Human GeneID(s): [10363](#)

Non-Human GeneID(s): 66867 (mouse)

Immunogen

Peptide with sequence C-ATVREVVNRLDR, from the C Terminus of the protein sequence according to NP_060670.1.

Please note the [peptide](#) is available for sale.

Purification and Storage

Purified from goat serum by ammonium sulphate precipitation followed by antigen affinity chromatography using the immunizing peptide.

Supplied at 0.5 mg/ml in Tris saline, 0.02% sodium azide, pH7.3 with 0.5% bovine serum albumin.

Aliquot and store at -20°C. Minimize freezing and thawing.

Applications Tested

Peptide ELISA: antibody detection limit dilution 1:32000.

Western blot: This antibody has been successfully used in Rat Brain as described in the following paper: Artegiani et al, J Biol Chem. 2010 Aug 6;285(32):24740-50.; PMID: 20530487.

IHC: In paraffin embedded Human Spleen shows staining of nucleoli. Recommended concentration: 1-2µg/ml.

Additional validation: This antibody has been successfully used in the following paper: Sikorski et al. (2018) PMID: 30377371.

Species Reactivity

Tested: Human, Rat

Expected from sequence similarity: Human, Mouse, Rat, Dog, Pig, Cow

Specific References

This antibody has been successfully used in the following paper:

Krzysztof Sikorski, Adi Mehta, Marit Inngjerdigen, Flourina Thakor, Simon Kling, Tomas Kalina, Tuula A. Nyman, Maria Ekman Stensland, Wei Zhou, Gustavo A. De Souza, Lars Holden, Jan Stuchly, Markus Templin and Fridtjof Lund-Johansen

A high-throughput pipeline for validation of antibodies

Nat Methods. 2018 Nov;15(11):909-912

PMID: 30377371

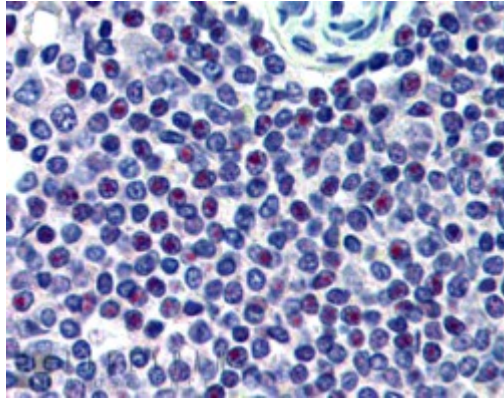
This antibody has been successfully used in WB on Rat:

Artegiani B, Labbaye C, Sferra A, Quaranta MT, Torreri P, Macchia G, Ceccarini M, Petrucci TC, Macioce P

The interaction with HMG20a/b proteins suggests a potential role for beta-dystrobrevin in neuronal differentiation.

J Biol Chem. 2010 Aug 6;285(32):24740-50.

PMID: 20530487



EB05594 (2.5µg/ml) staining of paraffin embedded Human Spleen. Steamed antigen retrieval with citrate buffer pH 6, AP-staining.