



## UK Office

### Everest Biotech Ltd

Cherwell Innovation Centre  
77 Heyford Park  
Upper Heyford  
Oxfordshire  
OX25 5HD  
UK

Enquiries:

[info@everestbiotech.com](mailto:info@everestbiotech.com)

Sales:

[sales@everestbiotech.com](mailto:sales@everestbiotech.com)

Tech support:

[support@everestbiotech.com](mailto:support@everestbiotech.com)

Tel: +44 (0)1869 238326

Fax: +44 (0)1869 238327

## US Office

### Everest Biotech c/o Abcore

405 Maple Street, Suite A106  
Ramona,  
CA 92065  
USA

Inquiries:

[info@everestbiotech.com](mailto:info@everestbiotech.com)

Sales:

[usasales@everestbiotech.com](mailto:usasales@everestbiotech.com)

Tech support:

[support@everestbiotech.com](mailto:support@everestbiotech.com)

Tel: 888-320-4628 (toll-free)

Fax: 888-841-9041

[www.everestbiotech.com](http://www.everestbiotech.com)

**Research Use Only. Not for  
diagnostic or therapeutic use.**

## EB09567 - Goat Anti-HMGA1 (aa9-21) Antibody

Size: 100µg specific antibody in 200µl



### Target Protein

**Principal Names:** HMGA1, high mobility group AT-hook 1, HMG-R, HMGA1A, HMGIY, MGC12816, MGC4242, MGC4854, OTTHUMP00000016222, OTTHUMP00000016223, OTTHUMP00000016224, OTTHUMP00000039618, high-mobility group (nonhistone chromosomal) protein isoforms I and Y, nonhistone chromosomal high-mobility group protein HMG-I/HMG-Y

**Official Symbol:** HMGA1

**Accession Number(s):** NP\_665906.1; NP\_002122.1

**Human GeneID(s):** [3159](#)

**Non-Human GeneID(s):** 15361 (mouse), 117062 (rat)

**Important Comments:** This antibody is expected to recognize reported isoforms a (NP\_665906.1, NP\_665908.1, NP\_665911.1) and b (NP\_002122.1, NP\_665910.1, NP\_665912.1). This antibody is not expected to cross-react with HMGA2.

### Immunogen

Peptide with sequence C-SQPLASKQEKDGT, from the internal region (near N Terminus) of the protein sequence according to NP\_665906.1; NP\_002122.1.

Please note the [peptide](#) is available for sale.

### Purification and Storage

Purified from goat serum by ammonium sulphate precipitation followed by antigen affinity chromatography using the immunizing peptide.

Supplied at 0.5 mg/ml in Tris saline, 0.02% sodium azide, pH7.3 with 0.5% bovine serum albumin.

Aliquot and store at -20°C. Minimize freezing and thawing.

### Applications Tested

**Peptide ELISA:** antibody detection limit dilution 1:16000.

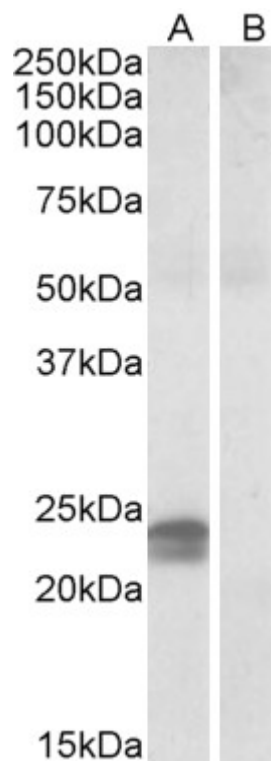
**Western blot:** Approx 24kDa band observed in Human Pancreas (calculated MW of 11.7kDa/10.7kDa according to NP\_665906.1; NP\_002122.1). This molecular weight is routinely observed by other sources. This band was successfully blocked by incubation with the immunizing peptide. Recommended concentration: 0.5-1µg/ml. Primary incubation was 1 hour.

**IHC:** Paraffin embedded Human Skin and Placenta. Recommended concentration: 3.75µg/ml.

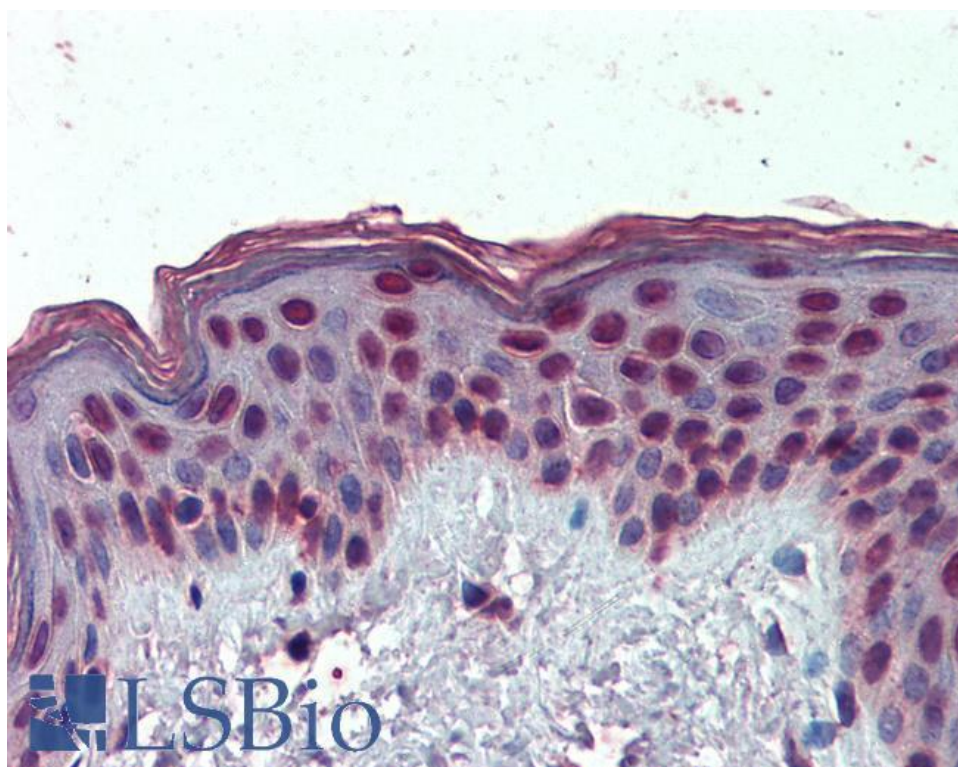
### Species Reactivity

**Tested:** Human

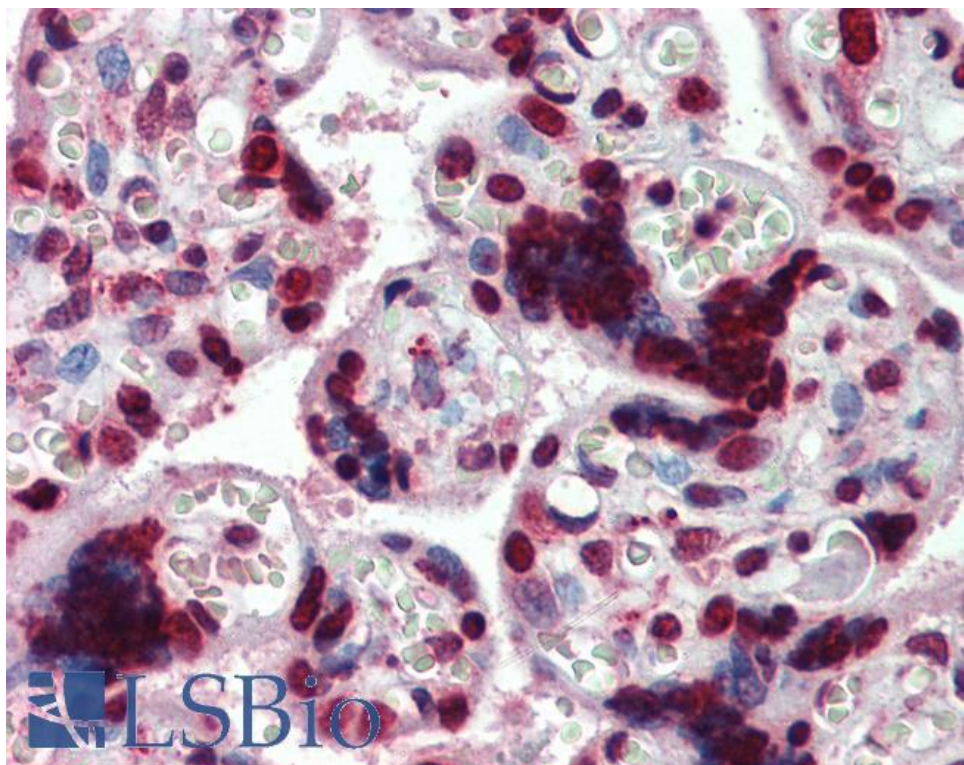
**Expected from sequence similarity:** Human, Mouse, Rat, Dog, Cow, Pig



EB09567 (0.5µg/ml) staining of Human Pancreas lysate (35µg protein in RIPA buffer) with (B) and without (A) blocking with the immunising peptide. Detected by chemiluminescence.



EB09567 (3.75µg/ml) staining of paraffin embedded Human Skin. Steamed antigen retrieval with citrate buffer pH 6, AP-staining.



EB09567 (3.75µg/ml) staining of paraffin embedded Human Placenta. Steamed antigen retrieval with citrate buffer pH 6, AP-staining.