



## International Office

### Everest Biotech Ltd

Vector Laboratories, Inc.  
6737 Mowry Ave  
Newark, CA 94560  
United States

Customer Service:

[customerservice@vectorlabs.com](mailto:customerservice@vectorlabs.com)

Technical Service:

[technical@vectorlabs.com](mailto:technical@vectorlabs.com)

Tel: +1 (800) 227-6666

[www.everestbiotech.com](http://www.everestbiotech.com)

**Research Use Only. Not for  
diagnostic or therapeutic use.**

## EB09248 - Goat Anti-HMGB3 / HMG4 Antibody

Size: 100µg specific antibody in 200µl



### Target Protein

**Principal Names:** HMGB3, high-mobility group box 3, HMG2A, HMG4, MGC90319, high-mobility group (nonhistone chromosomal) protein 4, non-histone chromosomal protein

**Official Symbol:** HMGB3

**Accession Number(s):** NP\_005333.2

**Human GeneID(s):** [3149](#)

**Non-Human GeneID(s):** 15354 (mouse)

### Immunogen

Peptide with sequence C-KFDGAKGPAKVARKK, from the internal region (near C Terminus) of the protein sequence according to NP\_005333.2.

Please note the [peptide](#) is available for sale.

### Purification and Storage

Purified from goat serum by ammonium sulphate precipitation followed by antigen affinity chromatography using the immunizing peptide.

Supplied at 0.5 mg/ml in Tris saline, 0.02% sodium azide, pH7.3 with 0.5% bovine serum albumin.

Aliquot and store at -20°C. Minimize freezing and thawing.

### Applications Tested

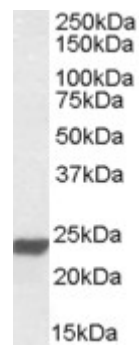
**Peptide ELISA:** antibody detection limit dilution 1:64000.

**Western blot:** Approx. 24kDa band observed in Human Lung lysates (calculated MW of 23.0kDa according to NP\_005333.2). Recommended concentration: 0.01-0.03µg/ml.

### Species Reactivity

**Tested:** Human

**Expected from sequence similarity:** Human, Mouse, Cow



EB09248 (0.01µg/ml) staining of Human Lung lysate (35µg protein in RIPA buffer). Primary incubation was 1 hour. Detected by chemiluminescence.