



## International Office

### Everest Biotech Ltd

Vector Laboratories, Inc.  
6737 Mowry Ave  
Newark, CA 94560  
United States

Customer Service:

[customerservice@vectorlabs.com](mailto:customerservice@vectorlabs.com)

Technical Service:

[technical@vectorlabs.com](mailto:technical@vectorlabs.com)

Tel: +1 (800) 227-6666

[www.everestbiotech.com](http://www.everestbiotech.com)

**Research Use Only. Not for  
diagnostic or therapeutic use.**

## EB12867 - Goat Anti-HMGCS1 Antibody

Size: 100µg specific antibody in 200µl



### Target Protein

**Principal Names:** HMGCS1, 3-hydroxy-3-methylglutaryl-CoA synthase 1 (soluble), HMGCS, 3-hydroxy-3-methylglutaryl coenzyme A (HMG-CoA) synthase, 3-hydroxy-3-methylglutaryl-Coenzyme A synthase 1 (soluble), hydroxymethylglutaryl-CoA synthase, cytoplasmic

**Official Symbol:** HMGCS1

**Accession Number(s):** NP\_002121.4

**Human GeneID(s):** [3157](#)

**Important Comments:** Reported variants represent identical protein: NP\_002121.4, NP\_001091742.1.

### Immunogen

Peptide with sequence ERNNLSYDCIGRLE, from the internal region of the protein sequence according to NP\_002121.4.

Please note the [peptide](#) is available for sale.

### Purification and Storage

Purified from goat serum by ammonium sulphate precipitation followed by antigen affinity chromatography using the immunizing peptide.

Supplied at 0.5 mg/ml in Tris saline, 0.02% sodium azide, pH7.3 with 0.5% bovine serum albumin.

Aliquot and store at -20°C. Minimize freezing and thawing.

### Applications Tested

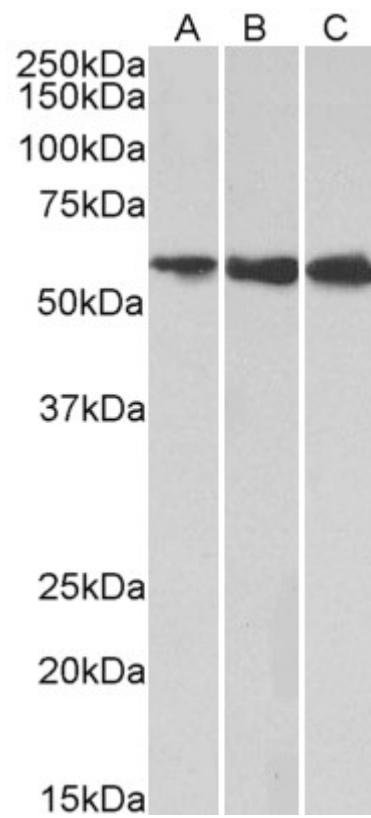
**Peptide ELISA:** antibody detection limit dilution 1:128000.

**Western blot:** Approx 57kDa band observed in lysates of cell lines HeLa, HepG2, and K562 (calculated MW of 57.3kDa according to NP\_002121.4). Recommended concentration: 1-3µg/ml.

### Species Reactivity

**Tested:** Human

**Expected from sequence similarity:** Human



EB12867 (1 $\mu$ g/ml) staining of HeLa (A), HepG2 (B) and K562 (C) lysates (35 $\mu$ g protein in RIPA buffer). Primary incubation was 1 hour. Detected by chemiluminescence.