



International Office

Everest Biotech Ltd

Vector Laboratories, Inc.
6737 Mowry Ave
Newark, CA 94560
United States

Customer Service:

customerservice@vectorlabs.com

Technical Service:

technical@vectorlabs.com

Tel: +1 (800) 227-6666

www.everestbiotech.com

**Research Use Only. Not for
diagnostic or therapeutic use.**

EB09483 - Goat Anti-HMOX2 Antibody

Size: 100µg specific antibody in 200µl



Target Protein

Principal Names: HMOX2, heme oxygenase (decycling) 2, HO-2, heme oxygenase (decycling) 2

Official Symbol: HMOX2

Accession Number(s): NP_002125.3; NP_001273196.1; NP_001273200.1

Human GeneID(s): [3163](#)

Non-Human GeneID(s): 15369 (mouse)

Immunogen

Peptide with sequence C-DQAGSTLARETLED, from the internal region of the protein sequence according to NP_002125.3; NP_001273196.1; NP_001273200.1.

Please note the [peptide](#) is available for sale.

Purification and Storage

Purified from goat serum by ammonium sulphate precipitation followed by antigen affinity chromatography using the immunizing peptide.

Supplied at 0.5 mg/ml in Tris saline, 0.02% sodium azide, pH7.3 with 0.5% bovine serum albumin.

Aliquot and store at -20°C. Minimize freezing and thawing.

Applications Tested

Peptide ELISA: antibody detection limit dilution 1:32000.

Western blot: Approx. 35kDa band observed in lysates of cell lines K562 and Jurkat (calculated MW of 36.0kDa according to NP_002125.3). Recommended concentration: 0.3-1µg/ml. Primary incubation 1 hour at room temperature.

IHC: In paraffin embedded Human Pancreas, cancerous tissue shows increased staining of invading cancer cells. Recommended concentration, 2-4µg/ml.

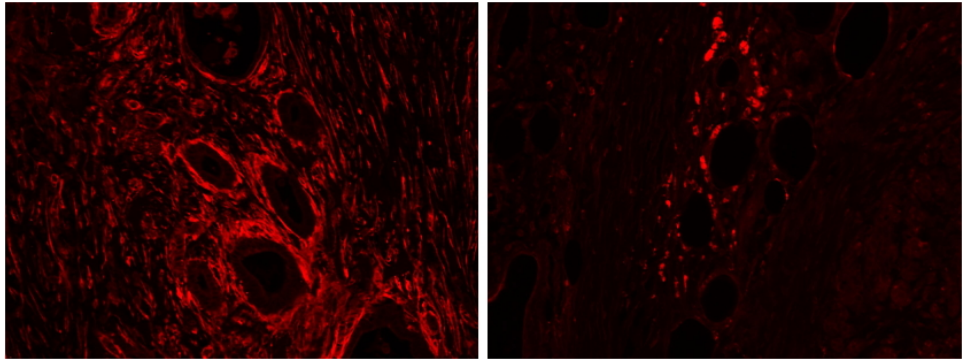
Immunofluorescence: Strong expression of the protein seen in the plasma membrane and cytoplasm of K562 cells. Recommended concentration: 10µg/ml..

Flow Cytometry: Flow cytometric analysis of K562 cells. Recommended concentration: 10ug/ml.

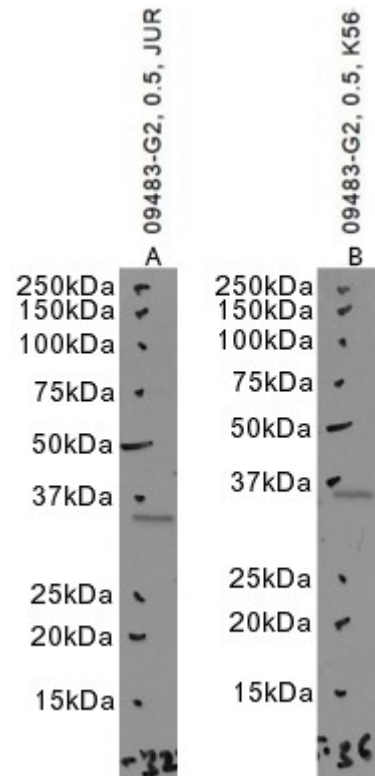
Species Reactivity

Tested: Human

Expected from sequence similarity: Human

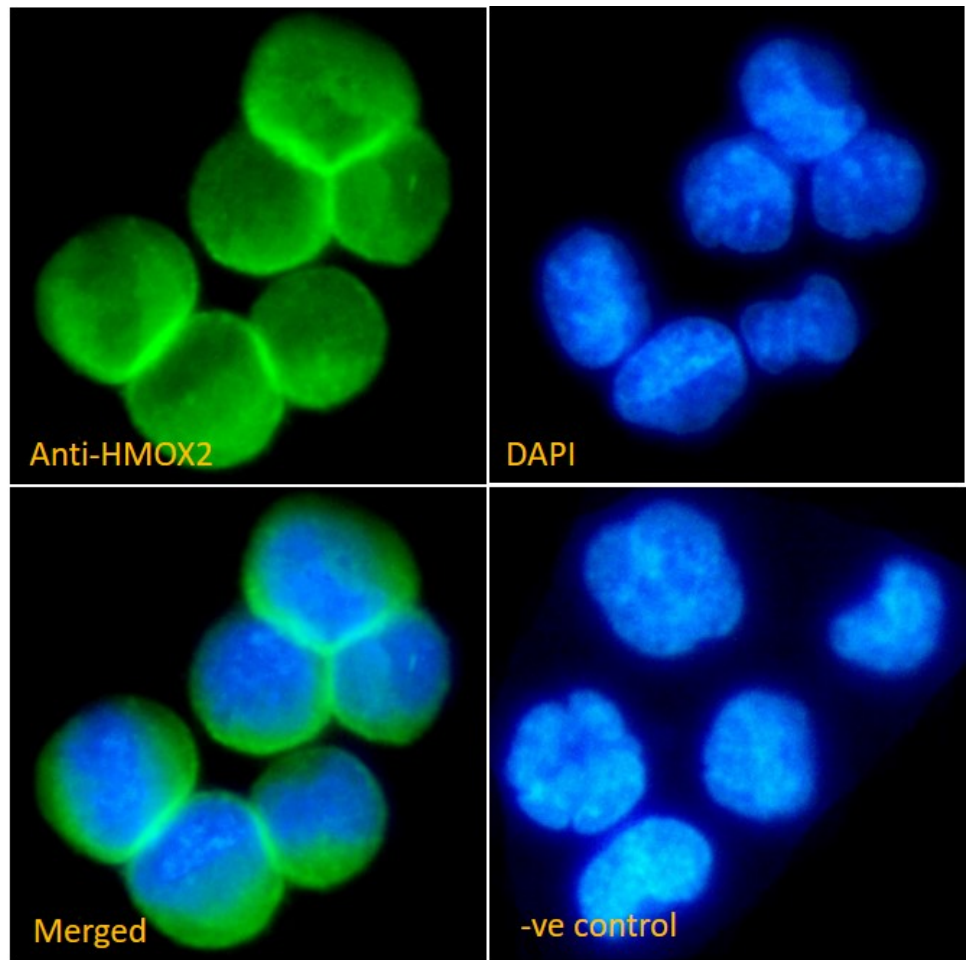


EB09483 (2µg/ml) staining of paraffin embedded Human Pancreas: cancer. (left) and adjacent to cancer (right)
Steamed antigen retrieval with citrate buffer pH 6, Alexa594-staining.

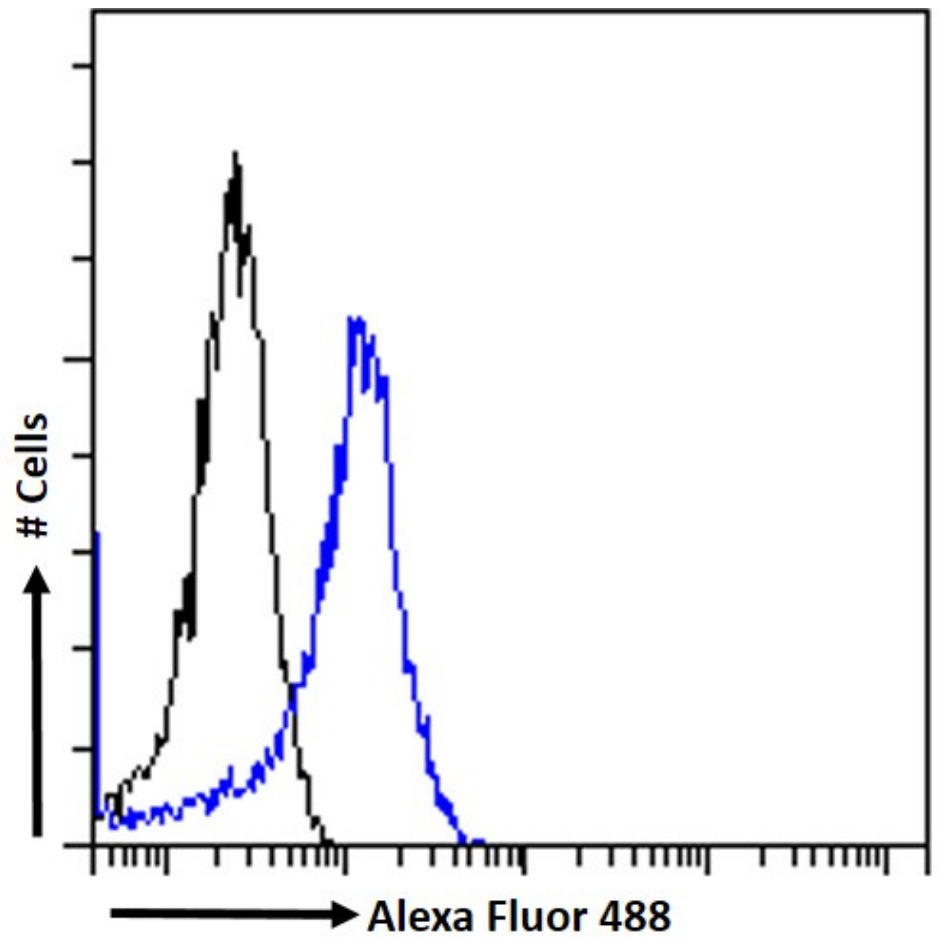


EB09483 optimised QC. Primary incubation 1 hour at room temperature.

Images A, B: Jurkat, K562 cell lysate at primary Ab concentration 0.5µg/ml. Loaded 35µg protein in RIPA buffer, per lane). Detected by chemiluminescence.



EB09483 Immunofluorescence analysis of paraformaldehyde fixed K562 immobilized on Shi-fix™ plus cover-slips. Primary incubation 1hr (1:50 dilution) followed by Alexa Fluor® 488 secondary antibody (1:2000 dilution), showing cytoplasmic and membrane staining. The nuclear stain is DAPI (blue). Negative control: Anti-Goat IgG followed by Alexa Fluor® 488 secondary antibody.



EB09483 Flow cytometric analysis of paraformaldehyde fixed K562 cells (blue line) permeabilized with 0.5% Triton. Primary incubation 1hr (10ug/ml) followed by Alexa Fluor 488® conjugated secondary antibody (1ug/ml). IgG control: Unimmunized goat IgG (black line) followed by Alexa Fluor 488 secondary antibody.