



UK Office

Everest Biotech Ltd

Cherwell Innovation Centre
77 Heyford Park
Upper Heyford
Oxfordshire
OX25 5HD
UK

Enquiries:

info@everestbiotech.com

Sales:

sales@everestbiotech.com

Tech support:

support@everestbiotech.com

Tel: +44 (0)1869 238326

Fax: +44 (0)1869 238327

US Office

Everest Biotech c/o Abcore

405 Maple Street, Suite A106
Ramona,
CA 92065
USA

Inquiries:

info@everestbiotech.com

Sales:

usasales@everestbiotech.com

Tech support:

support@everestbiotech.com

Tel: 888-320-4628 (toll-free)

Fax: 888-841-9041

www.everestbiotech.com

**Research Use Only. Not for
diagnostic or therapeutic use.**

EB06700 - Goat Anti-HNF4A Antibody

Size: 100µg specific antibody in 200µl



Target Protein

Principal Names: HNF4A, TCF, HNF4, NR2A1, TCF14, HNF4a7, HNF4a8, HNF4a9, NR2A21, hepatocyte nuclear factor 4, alpha, HNF4-alpha, transcription factor-14, FLJ39654, HNF4alpha, MODY, MODY1, HNF4alpha10/11/12

Official Symbol: HNF4A

Accession Number(s): NP_849180.1; NP_000448.3; NP_849181.1

Human GeneID(s): [3172](#)

Important Comments: This antibody is expected to recognise the reported isoforms a, b and c (NP_849180.1; NP_000448.3; NP_849181.1 resp.).

Immunogen

Peptide with sequence RLSKTLVDMDMADY-C, from the N Terminus of the protein sequence according to NP_849180.1; NP_000448.3; NP_849181.1.

Please note the [peptide](#) is available for sale.

Purification and Storage

Purified from goat serum by ammonium sulphate precipitation followed by antigen affinity chromatography using the immunizing peptide.

Supplied at 0.5 mg/ml in Tris saline, 0.02% sodium azide, pH7.3 with 0.5% bovine serum albumin.

Aliquot and store at -20°C. Minimize freezing and thawing.

Applications Tested

Peptide ELISA: antibody detection limit dilution 1:32000.

Western blot: Approx 55kDa and 48kDa bands observed in lysates of cell line HepG2 (calculated MW of 52.8kDa according to Human NP_000448.3, 46.6kDa according to Human NP_849181.1). Recommended concentration: 0.1-0.5µg/ml. Primary incubation was 1 hour.

IHC: Paraffin embedded Human Small Intestine. Recommended concentration: 2µg/ml.

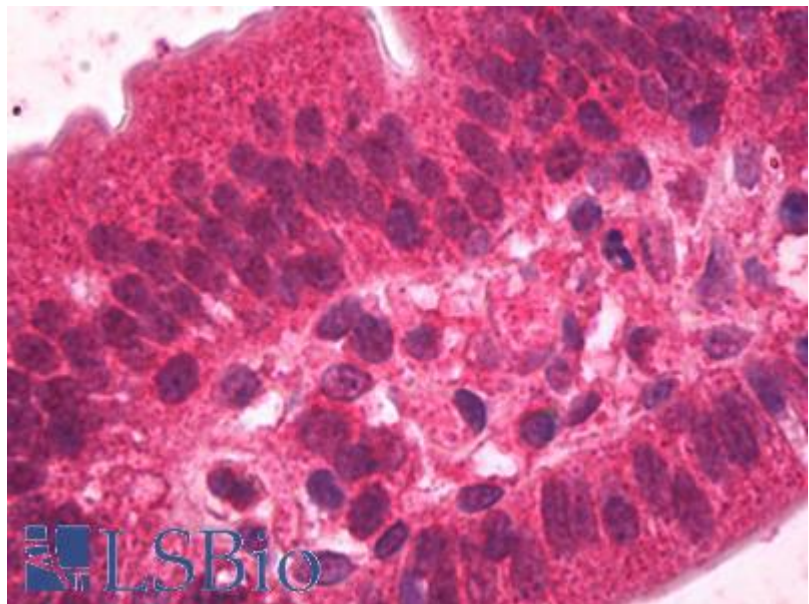
Species Reactivity

Tested: Human

Expected from sequence similarity: Human, Dog, Pig



EB06700 (0.1µg/ml) staining of HepG2 lysate (35µg protein in RIPA buffer). Detected by chemiluminescence.



EB06700 (2µg/ml) staining of paraffin embedded Human Small Intestine. Steamed antigen retrieval with citrate buffer pH 6, AP-staining.