



International Office

Everest Biotech Ltd

Vector Laboratories, Inc.
6737 Mowry Ave
Newark, CA 94560
United States

Customer Service:

customerservice@vectorlabs.com

Technical Service:

technical@vectorlabs.com

Tel: +1 (800) 227-6666

www.everestbiotech.com

**Research Use Only. Not for
diagnostic or therapeutic use.**

EB12200 - Goat Anti-HOXA5 (aa157-168) Antibody

Size: 100µg specific antibody in 200µl



Target Protein

Principal Names: HOXA5, homeobox A5, HOX1, HOX1.3, HOX1C, homeo box 1C, homeo box A5, homeobox protein HOXA5, homeobox protein Hox-1C, homeobox protein Hox-A5

Official Symbol: HOXA5

Accession Number(s): NP_061975.2

Human GeneID(s): [3202](#)

Immunogen

Peptide with sequence C-SEQASQSEPSP, from the internal region of the protein sequence according to NP_061975.2.

Please note the [peptide](#) is available for sale.

Purification and Storage

Purified from goat serum by ammonium sulphate precipitation followed by antigen affinity chromatography using the immunizing peptide.

Supplied at 0.5 mg/ml in Tris saline, 0.02% sodium azide, pH7.3 with 0.5% bovine serum albumin.

Aliquot and store at -20°C. Minimize freezing and thawing.

Applications Tested

Peptide ELISA: antibody detection limit dilution 1:2000.

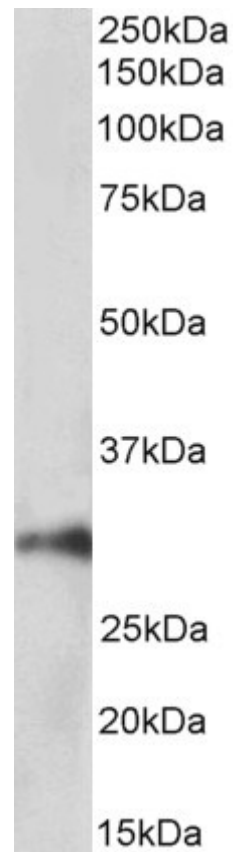
Western blot: Approx 30kDa band observed in Pig Kidney lysates (calculated MW of 29.3kDa according to Pig NP_001182161.1). Recommended concentration: 1-3µg/ml.

IHC: Paraffin embedded Human Prostate. Recommended concentration: 5µg/ml.

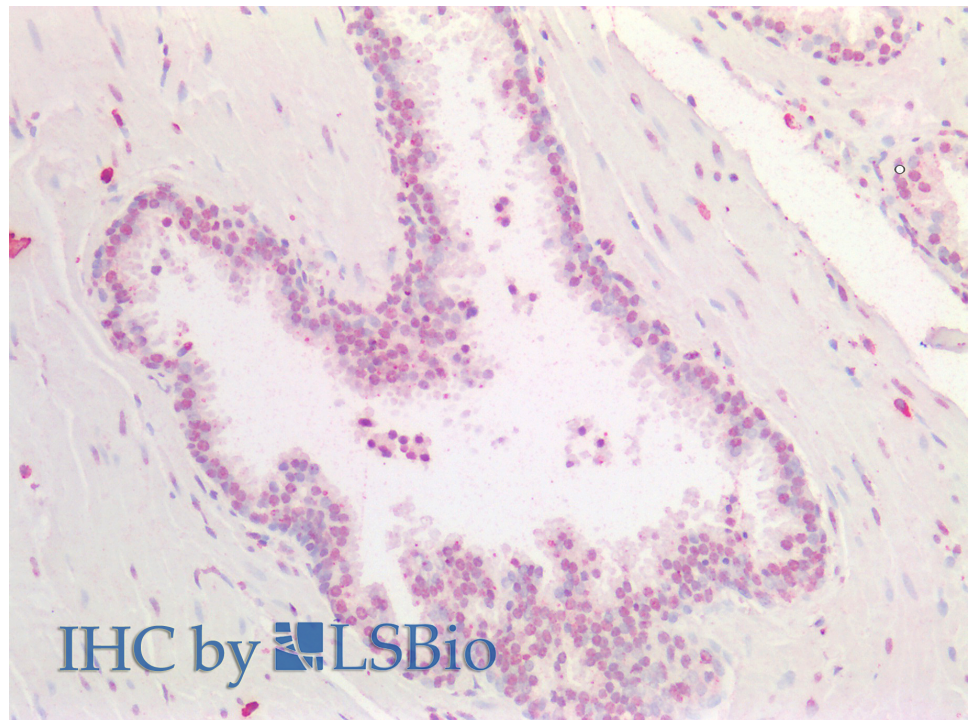
Species Reactivity

Tested: Human, Pig

Expected from sequence similarity: Human, Pig, Cow



EB12200 (1µg/ml) staining of Pig Kidney lysate (35µg protein in RIPA buffer). Primary incubation was 1 hour.
Detected by chemiluminescence.



EB12200 (5µg/ml) staining of paraffin embedded Human Prostate. Steamed antigen retrieval with citrate buffer pH 6, AP-staining.