



## International Office

### Everest Biotech Ltd

Vector Laboratories, Inc.  
6737 Mowry Ave  
Newark, CA 94560  
United States

Customer Service:

[customerservice@vectorlabs.com](mailto:customerservice@vectorlabs.com)

Technical Service:

[technical@vectorlabs.com](mailto:technical@vectorlabs.com)

Tel: +1 (800) 227-6666

[www.everestbiotech.com](http://www.everestbiotech.com)

**Research Use Only. Not for  
diagnostic or therapeutic use.**

## EB12199 - Goat Anti-HOXA5 (aa83-92) Antibody

Size: 100µg specific antibody in 200µl



### Target Protein

**Principal Names:** HOXA5, homeobox A5, HOX1, HOX1.3, HOX1C, homeo box 1C, homeo box A5, homeobox protein HOXA5, homeobox protein Hox-1C, homeobox protein Hox-A5

**Official Symbol:** HOXA5

**Accession Number(s):** NP\_061975.2

**Human GeneID(s):** [3202](#)

**Non-Human GeneID(s):** 15402 (mouse)

### Immunogen

Peptide with sequence C-EPRYSQPATS, from the internal region of the protein sequence according to NP\_061975.2.

Please note the [peptide](#) is available for sale.

### Purification and Storage

Purified from goat serum by ammonium sulphate precipitation followed by antigen affinity chromatography using the immunizing peptide.

Supplied at 0.5 mg/ml in Tris saline, 0.02% sodium azide, pH7.3 with 0.5% bovine serum albumin.

Aliquot and store at -20°C. Minimize freezing and thawing.

### Applications Tested

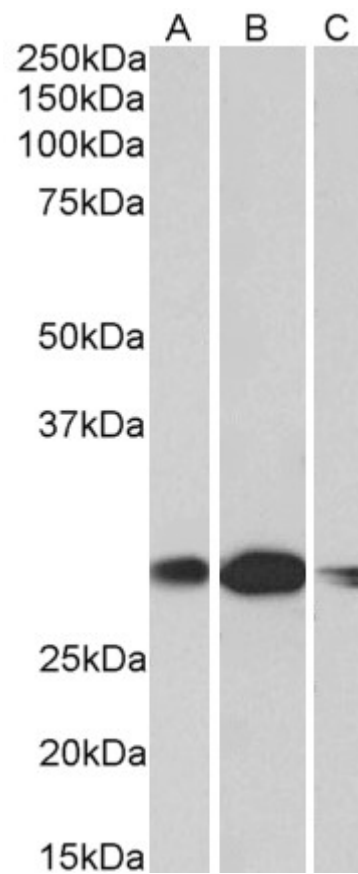
**Peptide ELISA:** antibody detection limit dilution 1:8000.

**Western blot:** Approx 28kDa band observed in Human, Mouse, Rat and Pig Kidney lysates (calculated MW of 29.2kDa according to Mouse NP\_034583.1). Recommended concentration: 1-3µg/ml.

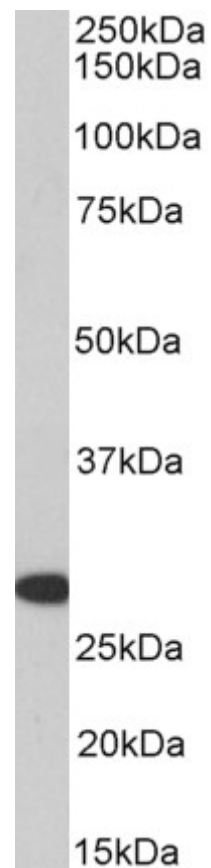
### Species Reactivity

**Tested:** Human, Mouse, Rat, Pig

**Expected from sequence similarity:** Human, Mouse, Pig, Cow



EB12199 (1 $\mu$ g/ml) staining of Human (A), Mouse (B) and rat (C) Kidney lysates (35 $\mu$ g protein in RIPA buffer). Primary incubation was 1 hour. Detected by chemiluminescence.



EB12199 (1µg/ml) staining of Pig Kidney lysate (35µg protein in RIPA buffer). Primary incubation was 1 hour.  
Detected by chemiluminescence.