



## International Office

### Everest Biotech Ltd

Vector Laboratories, Inc.  
6737 Mowry Ave  
Newark, CA 94560  
United States

Customer Service:

[customerservice@vectorlabs.com](mailto:customerservice@vectorlabs.com)

Technical Service:

[technical@vectorlabs.com](mailto:technical@vectorlabs.com)

Tel: +1 (800) 227-6666

[www.everestbiotech.com](http://www.everestbiotech.com)

**Research Use Only. Not for  
diagnostic or therapeutic use.**

## EB10046 - Goat Anti-HOXA9 (aa37-50) Antibody

Size: 100µg specific antibody in 200µl



### Target Protein

**Principal Names:** ABD-B, homeo box A9, homeobox A9, homeobox protein HOXA9, homeodomain protein HOXA9, HOX1, HOX1.7, HOX1G, MGC1934, HOXA9

**Official Symbol:** HOXA9

**Accession Number(s):** NP\_689952.1

**Human GeneID(s):** [3205](#)

### Immunogen

Peptide with sequence C-QPPRQAATLAEHPD, from the internal region of the protein sequence according to NP\_689952.1.

Please note the [peptide](#) is available for sale.

### Purification and Storage

Purified from goat serum by ammonium sulphate precipitation followed by antigen affinity chromatography using the immunizing peptide.

Supplied at 0.5 mg/ml in Tris saline, 0.02% sodium azide, pH7.3 with 0.5% bovine serum albumin.

Aliquot and store at -20°C. Minimize freezing and thawing.

### Applications Tested

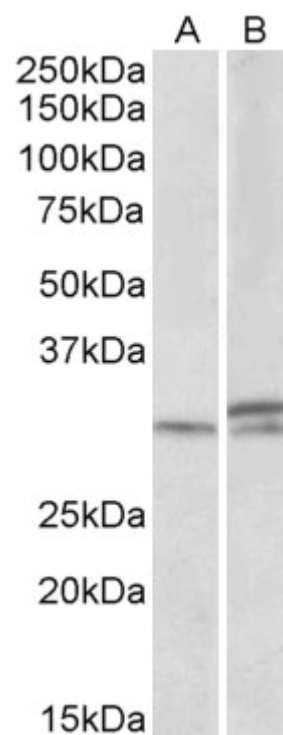
**Peptide ELISA:** antibody detection limit dilution 1:16000.

**Western blot:** Approx 30 to 33kDa bands observed in Mouse and Rat Spinal Cord lysates (calculated MW of 29.9kDa according to Mouse NP\_034586.1 and 25.8kDa according to Rat NP\_001102703.2). Recommended concentration: 1-3µg/ml.

### Species Reactivity

**Tested:** Mouse, Rat

**Expected from sequence similarity:** Human, Mouse, Cow



EB10046 (1µg/ml) staining of Mouse and Rat Spinal Cord lysates (35µg protein in RIPA buffer). Primary incubation was 1 hour. Detected by chemiluminescence.