



International Office

Everest Biotech Ltd

Vector Laboratories, Inc.
6737 Mowry Ave
Newark, CA 94560
United States

Customer Service:

customerservice@vectorlabs.com

Technical Service:

technical@vectorlabs.com

Tel: +1 (800) 227-6666

www.everestbiotech.com

**Research Use Only. Not for
diagnostic or therapeutic use.**

EB12208 - Goat Anti-HOXC6 (isoform 1) Antibody

Size: 100µg specific antibody in 200µl



Target Protein

Principal Names: HOXC6, homeobox C6, CP25, HHO.C8, HOX3, HOX3C, homeo box 3C, homeo box C6, homeo box C8 protein, homeobox protein CP25, homeobox protein HHO.C8, homeobox protein Hox-3C, homeobox protein Hox-C6

Official Symbol: HOXC6

Accession Number(s): NP_004494.1

Human GeneID(s): [3223](#)

Non-Human GeneID(s): 15425 (mouse), 252885 (rat)

Important Comments: This antibody is expected to recognize isoform 1 (NP_004494.1) only.

Immunogen

Peptide with sequence C-PNVALNSTAYDPVRH, from the internal region (near N Terminus) of the protein sequence according to NP_004494.1.

Please note the [peptide](#) is available for sale.

Purification and Storage

Purified from goat serum by ammonium sulphate precipitation followed by antigen affinity chromatography using the immunizing peptide.

Supplied at 0.5 mg/ml in Tris saline, 0.02% sodium azide, pH7.3 with 0.5% bovine serum albumin.

Aliquot and store at -20°C. Minimize freezing and thawing.

Applications Tested

Peptide ELISA: antibody detection limit dilution 1:128000.

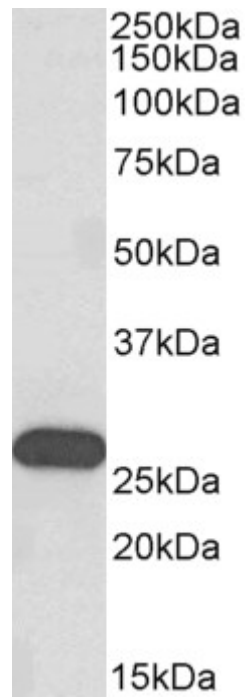
Western blot: Approx 26kDa band observed in Human Brain (Olfactory bulb) and in Rat and Pig Brain lysates (calculated MW of 26.9kDa according to NP_004494.1). In Mouse Brain lysates the band runs like a 27kDa band. Recommended concentration: 0.03-0.1µg/ml. Primary incubation was 1 hour.

IHC: Paraffin embedded Human Tonsil. Recommended concentration: 5µg/ml.

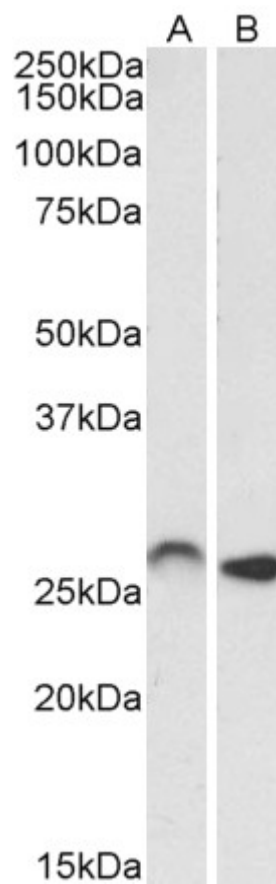
Species Reactivity

Tested: Human, Mouse, Rat, Pig

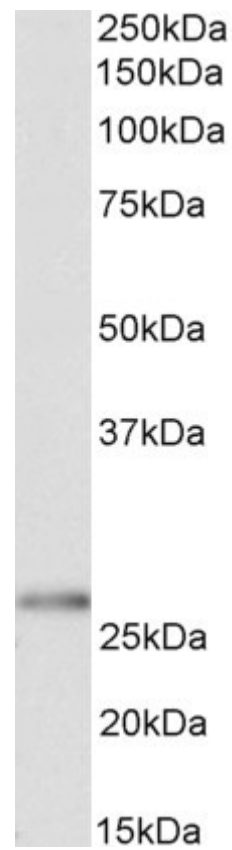
Expected from sequence similarity: Human, Mouse, Rat, Dog, Pig, Cow



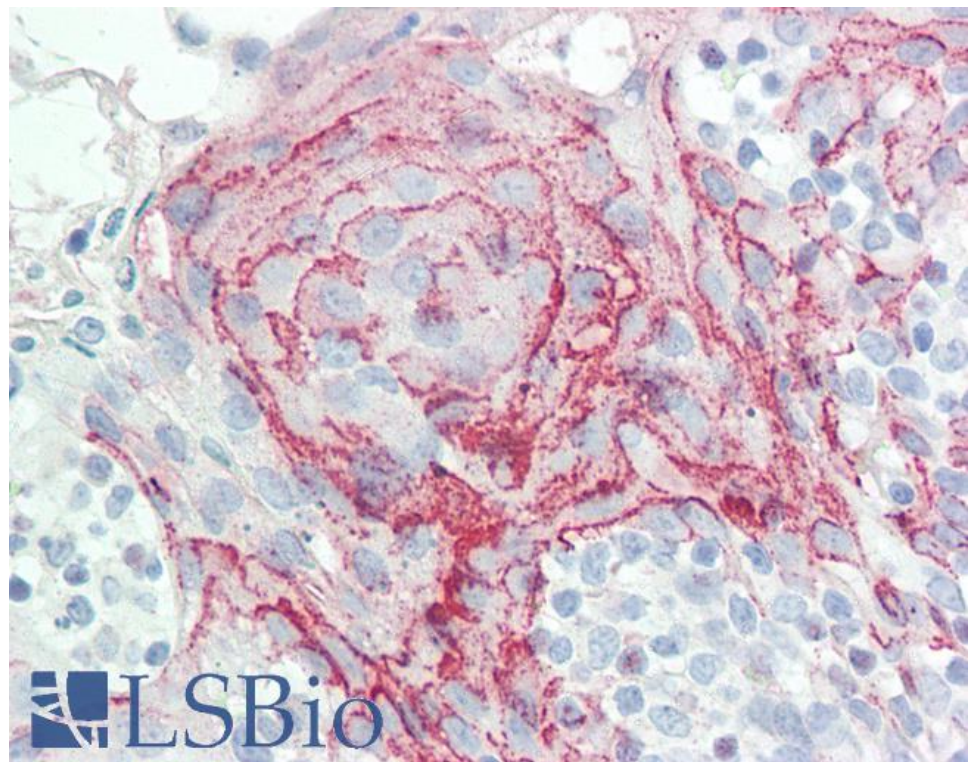
EB12208 (0.3 μ g/ml) staining of Human Olfactory bulb lysate (35 μ g protein in RIPA buffer). Detected by chemiluminescence.



EB12208 (0.01 μ g/ml) staining of Mouse (A) and Rat (B) Brain lysates (35 μ g protein in RIPA buffer). Detected by chemiluminescence.



EB12208 (0.03 μ g/ml) staining of Pig Brain lysates (35 μ g protein in RIPA buffer). Detected by chemiluminescence.



EB12208 (5 μ g/ml) staining of paraffin embedded Human Tonsil. Steamed antigen retrieval with citrate buffer pH 6, AP-staining.