



## UK Office

### Everest Biotech Ltd

Cherwell Innovation Centre  
77 Heyford Park  
Upper Heyford  
Oxfordshire  
OX25 5HD  
UK

Enquiries:

[info@everestbiotech.com](mailto:info@everestbiotech.com)

Sales:

[sales@everestbiotech.com](mailto:sales@everestbiotech.com)

Tech support:

[support@everestbiotech.com](mailto:support@everestbiotech.com)

Tel: +44 (0)1869 238326

Fax: +44 (0)1869 238327

## US Office

### Everest Biotech c/o Abcore

405 Maple Street, Suite A106  
Ramona,  
CA 92065  
USA

Inquiries:

[info@everestbiotech.com](mailto:info@everestbiotech.com)

Sales:

[usasales@everestbiotech.com](mailto:usasales@everestbiotech.com)

Tech support:

[support@everestbiotech.com](mailto:support@everestbiotech.com)

Tel: 888-320-4628 (toll-free)

Fax: 888-841-9041

[www.everestbiotech.com](http://www.everestbiotech.com)

**Research Use Only. Not for  
diagnostic or therapeutic use.**

## EB11909 - Goat Anti-HOXD13 Antibody

Size: 100µg specific antibody in 200µl



### Target Protein

**Principal Names:** HOXD13, homeobox D13, BDE, BDSD, HOX4l, SPD, homeo box 4l, homeo box D13, homeobox protein Hox-4l, homeobox protein Hox-D13

**Official Symbol:** HOXD13

**Accession Number(s):** NP\_000514.2

**Human GeneID(s):** [3239](#)

**Non-Human GeneID(s):** 15433 (mouse), 288154 (rat)

### Immunogen

Peptide with sequence CTKDQPQGSHFWKS, from the internal region of the protein sequence according to NP\_000514.2.

Please note the [peptide](#) is available for sale.

### Purification and Storage

Purified from goat serum by ammonium sulphate precipitation followed by antigen affinity chromatography using the immunizing peptide.

Supplied at 0.5 mg/ml in Tris saline, 0.02% sodium azide, pH7.3 with 0.5% bovine serum albumin.

Aliquot and store at -20°C. Minimize freezing and thawing.

### Applications Tested

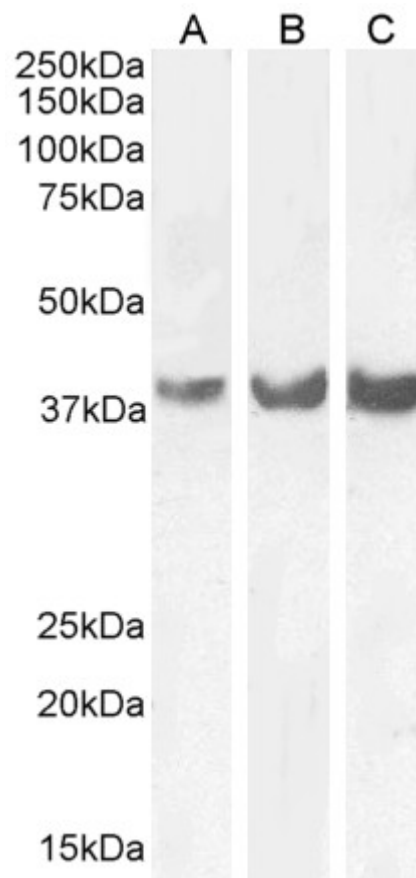
**Peptide ELISA:** antibody detection limit dilution 1:1000.

**Western blot:** Approx 38kDa band observed in Human (Cerebellum), Mouse and Rat Brain lysates (calculated MW of 36.1kDa according to Human NP\_000514.2, 35.9kDa according to Mouse NP\_032301.2 and 34.9kDa according to Rat NP\_001099356.1). Recommended concentration: 0.1-1µg/ml. Primary incubation 1 hour at room temperature.

### Species Reactivity

**Tested:** Human, Mouse, Rat

**Expected from sequence similarity:** Human, Mouse, Rat, Pig, Cow



EB11909 (0.3 $\mu$ g/ml) staining of Human (A), Mouse (B) and (0.1 $\mu$ g/ml) Rat (C) Brain lysate (35 $\mu$ g protein in RIPA buffer). Detected by chemiluminescence.