



## UK Office

### Everest Biotech Ltd

Cherwell Innovation Centre  
77 Heyford Park  
Upper Heyford  
Oxfordshire  
OX25 5HD  
UK

Enquiries:

[info@everestbiotech.com](mailto:info@everestbiotech.com)

Sales:

[sales@everestbiotech.com](mailto:sales@everestbiotech.com)

Tech support:

[support@everestbiotech.com](mailto:support@everestbiotech.com)

Tel: +44 (0)1869 238326

[www.everestbiotech.com](http://www.everestbiotech.com)

**Research Use Only. Not for  
diagnostic or therapeutic use.**

## EB05454 - Goat Anti-HPK1 / MAP4K1 Antibody

Size: 100µg specific antibody in 200µl



### Target Protein

**Principal Names:** MAP4K1, mitogen-activated protein kinase kinase kinase 1, HPK1, hematopoietic progenitor kinase 1

**Official Symbol:** MAP4K1

**Accession Number(s):** NP\_001036065.1; NP\_009112.1

**Human GeneID(s):** [11184](#)

**Important Comments:** This antibody is expected to recognise isoform 1 (NP\_001036065.1) and isoform 2 (NP\_009112.1).

### Immunogen

Peptide with sequence DVVDPDIFNRDPR-C, from the N Terminus of the protein sequence according to NP\_001036065.1; NP\_009112.1.

Please note the [peptide](#) is available for sale.

### Purification and Storage

Purified from goat serum by ammonium sulphate precipitation followed by antigen affinity chromatography using the immunizing peptide.

Supplied at 0.5 mg/ml in Tris saline, 0.02% sodium azide, pH7.3 with 0.5% bovine serum albumin.

Aliquot and store at -20°C. Minimize freezing and thawing.

### Applications Tested

**Peptide ELISA:** antibody detection limit dilution 1:32000.

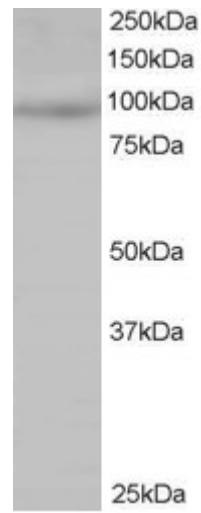
**Western blot:** Approx 95-100kDa band observed in Jurkat (predicted MW of 96kDa according to NP\_009112). Recommended for use at 0.5-2µg/ml.

**IHC:** Paraffin embedded Human Thymus. Recommended concentration: 2.5µg/ml.

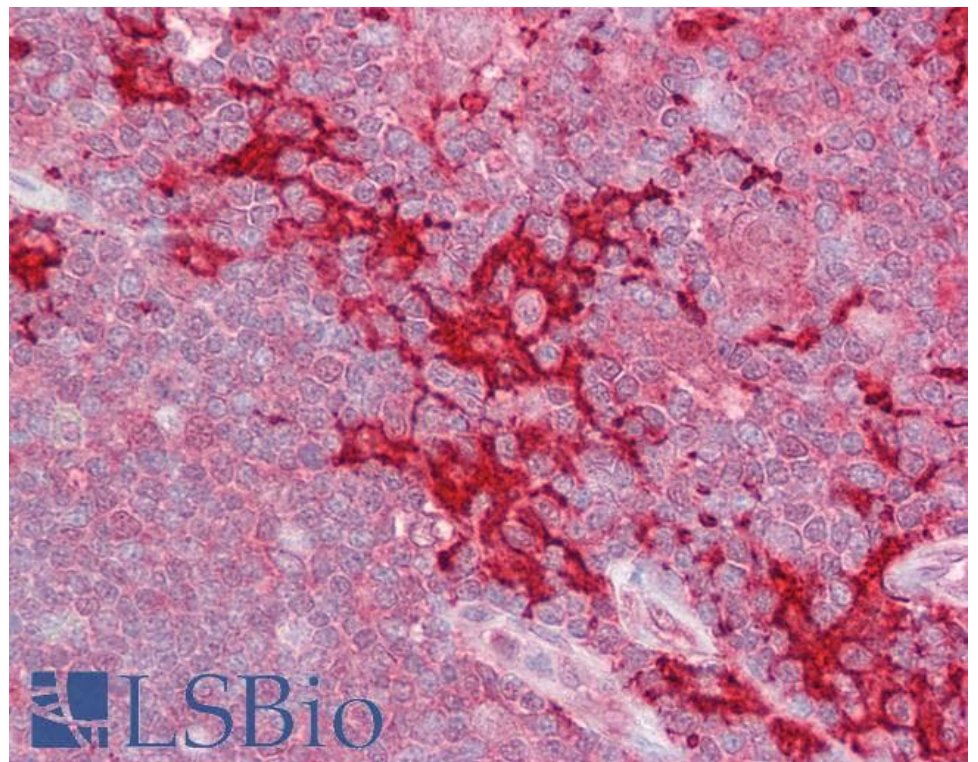
### Species Reactivity

**Tested:** Human

**Expected from sequence similarity:** Human, Mouse, Rat, Dog, Pig, Cow



EB05454 staining (0.5 $\mu$ g/ml) of Jurkat lysate (RIPA buffer, 35 $\mu$ g total protein per lane). Primary incubated for 1 hour. Detected by chemiluminescence.



EB05454 (2.5 $\mu$ g/ml) staining of paraffin embedded Human Thymus. Steamed antigen retrieval with citrate buffer pH 6, AP-staining.