



UK Office

Everest Biotech Ltd

Cherwell Innovation Centre
77 Heyford Park
Upper Heyford
Oxfordshire
OX25 5HD
UK

Enquiries:

info@everestbiotech.com

Sales:

sales@everestbiotech.com

Tech support:

support@everestbiotech.com

Tel: +44 (0)1869 238326

Fax: +44 (0)1869 238327

US Office

Everest Biotech c/o Abcore

405 Maple Street, Suite A106
Ramona,
CA 92065
USA

Inquiries:

info@everestbiotech.com

Sales:

usasales@everestbiotech.com

Tech support:

support@everestbiotech.com

Tel: 888-320-4628 (toll-free)

Fax: 888-841-9041

www.everestbiotech.com

**Research Use Only. Not for
diagnostic or therapeutic use.**

EB05454 - Goat Anti-HPK1 / MAP4K1 Antibody

Size: 100µg specific antibody in 200µl



Target Protein

Principal Names: MAP4K1, mitogen-activated protein kinase kinase kinase 1, HPK1, hematopoietic progenitor kinase 1

Official Symbol: MAP4K1

Accession Number(s): NP_001036065.1; NP_009112.1

Human GeneID(s): [11184](#)

Important Comments: This antibody is expected to recognise isoform 1 (NP_001036065.1) and isoform 2 (NP_009112.1).

Immunogen

Peptide with sequence DVVDPDIFNRDPR-C, from the N Terminus of the protein sequence according to NP_001036065.1; NP_009112.1.

Please note the [peptide](#) is available for sale.

Purification and Storage

Purified from goat serum by ammonium sulphate precipitation followed by antigen affinity chromatography using the immunizing peptide.

Supplied at 0.5 mg/ml in Tris saline, 0.02% sodium azide, pH7.3 with 0.5% bovine serum albumin.

Aliquot and store at -20°C. Minimize freezing and thawing.

Applications Tested

Peptide ELISA: antibody detection limit dilution 1:32000.

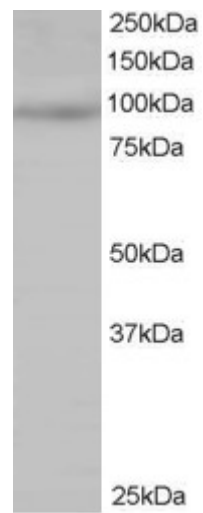
Western blot: Approx 95-100kDa band observed in Jurkat (predicted MW of 96kDa according to NP_009112). Recommended for use at 0.5-2µg/ml.

IHC: Paraffin embedded Human Thymus. Recommended concentration: 2.5µg/ml.

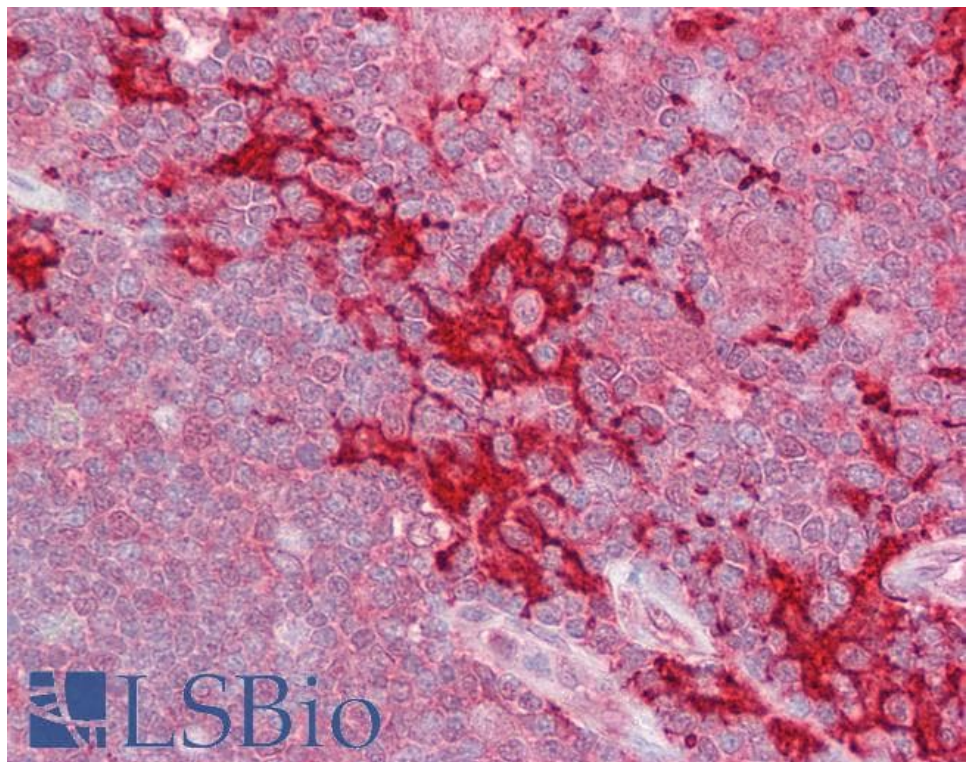
Species Reactivity

Tested: Human

Expected from sequence similarity: Human, Mouse, Rat, Dog, Pig, Cow



EB05454 staining (0.5µg/ml) of Jurkat lysate (RIPA buffer, 35µg total protein per lane). Primary incubated for 1 hour. Detected by chemiluminescence.



EB05454 (2.5µg/ml) staining of paraffin embedded Human Thymus. Steamed antigen retrieval with citrate buffer pH 6, AP-staining.