



## UK Office

### Everest Biotech Ltd

Cherwell Innovation Centre  
77 Heyford Park  
Upper Heyford  
Oxfordshire  
OX25 5HD  
UK

Enquiries:

[info@everestbiotech.com](mailto:info@everestbiotech.com)

Sales:

[sales@everestbiotech.com](mailto:sales@everestbiotech.com)

Tech support:

[support@everestbiotech.com](mailto:support@everestbiotech.com)

Tel: +44 (0)1869 238326

Fax: +44 (0)1869 238327

## US Office

### Everest Biotech c/o Abcore

405 Maple Street, Suite A106  
Ramona,  
CA 92065  
USA

Inquiries:

[info@everestbiotech.com](mailto:info@everestbiotech.com)

Sales:

[usasales@everestbiotech.com](mailto:usasales@everestbiotech.com)

Tech support:

[support@everestbiotech.com](mailto:support@everestbiotech.com)

Tel: 888-320-4628 (toll-free)

Fax: 888-841-9041

[www.everestbiotech.com](http://www.everestbiotech.com)

**Research Use Only. Not for  
diagnostic or therapeutic use.**

## EB06624 - Goat Anti-HPS6 Antibody

Size: 100µg specific antibody in 200µl



### Target Protein

**Principal Names:** HPS6, FLJ22501, MGC20522, Hermansky-Pudlak syndrome 6, RP11-302K17.1, Hermansky-Pudlak syndrome-6, Hermansky-Pudlak syndrome-6

**Official Symbol:** HPS6

**Accession Number(s):** NP\_079023

**Human GeneID(s):** [79803](#)

### Immunogen

Peptide with sequence LRTELRDYRGLEEC, from the internal region of the protein sequence according to NP\_079023.

Please note the [peptide](#) is available for sale.

### Purification and Storage

Purified from goat serum by ammonium sulphate precipitation followed by antigen affinity chromatography using the immunizing peptide.

Supplied at 0.5 mg/ml in Tris saline, 0.02% sodium azide, pH7.3 with 0.5% bovine serum albumin.

Aliquot and store at -20°C. Minimize freezing and thawing.

### Applications Tested

**Peptide ELISA:** antibody detection limit dilution 1:32000.

**Western blot:** Approx 90-100kDa band observed in Human Lung and Human Skin lysates (calculated MW of 83.0kDa according to NP\_079023). Recommended concentration: 1-3µg/ml. Primary incubation was for 1 hour.

**IHC:** Paraffin embedded Human Brain (Cortex). Recommended concentration: 5µg/ml.

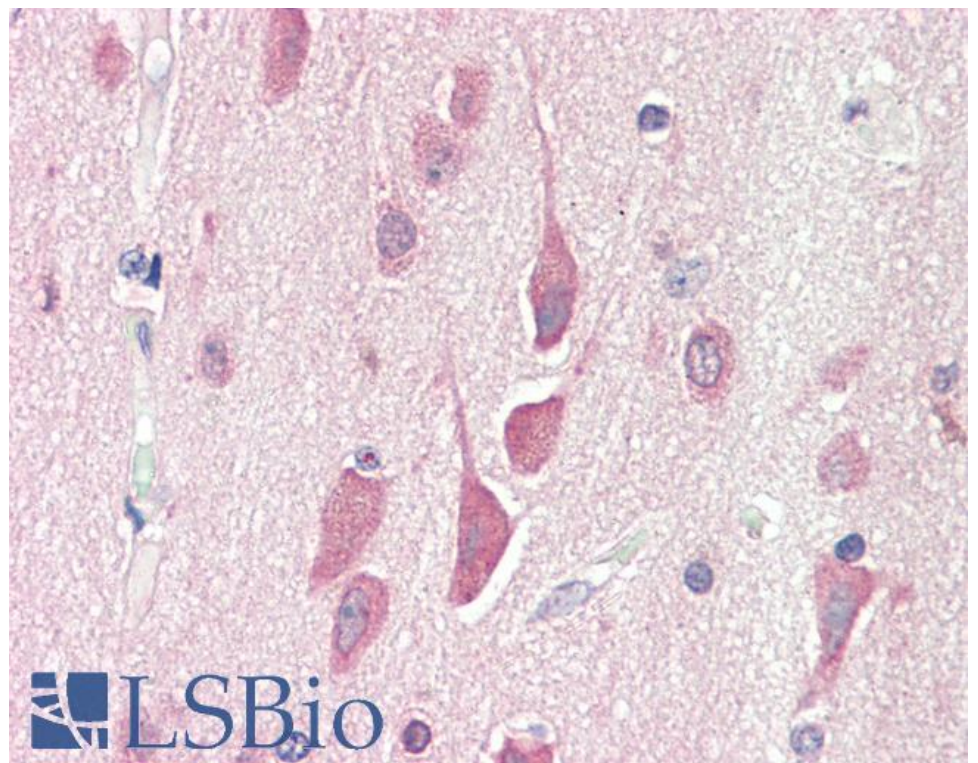
### Species Reactivity

**Tested:** Human

**Expected from sequence similarity:** Human, Mouse, Rat, Pig, Cow



EB06624 staining (1µg/ml) of Human Lung lysate (RIPA buffer, 30µg total protein per lane). Detected by chemiluminescence.



EB06624 (5µg/ml) staining of paraffin embedded Human Cortex. Steamed antigen retrieval with citrate buffer pH 6, AP-staining.