



## International Office

### Everest Biotech Ltd

Vector Laboratories, Inc.  
6737 Mowry Ave  
Newark, CA 94560  
United States

Customer Service:

[customerservice@vectorlabs.com](mailto:customerservice@vectorlabs.com)

Technical Service:

[technical@vectorlabs.com](mailto:technical@vectorlabs.com)

Tel: +1 (800) 227-6666

[www.everestbiotech.com](http://www.everestbiotech.com)

**Research Use Only. Not for  
diagnostic or therapeutic use.**

## EB08338 - Goat Anti-HRASLS3 / HREV107-3 Antibody

Size: 100µg specific antibody in 200µl



### Target Protein

**Principal Names:** PLA2G16, phospholipase A2, group XVI, AdPLA, H-REV107-1, HRASLS3, HREV107, HREV107-3, MGC118754, HRAS-like suppressor 3, adipose-specific PLA2

**Official Symbol:** PLAAT3

**Accession Number(s):** NP\_009000.2

**Human GeneID(s):** [11145](#)

**Non-Human GeneID(s):** 225845 (mouse), 24913 (rat)

**Important Comments:** Reported variants represent identical protein:NP\_009000.2 and NP\_001121675.1).

### Immunogen

Peptide with sequence RAPIPEPKPGDLIE-C, from the N Terminus of the protein sequence according to NP\_009000.2.

Please note the [peptide](#) is available for sale.

### Purification and Storage

Purified from goat serum by ammonium sulphate precipitation followed by antigen affinity chromatography using the immunizing peptide.

Supplied at 0.5 mg/ml in Tris saline, 0.02% sodium azide, pH7.3 with 0.5% bovine serum albumin.

Aliquot and store at -20°C. Minimize freezing and thawing.

### Applications Tested

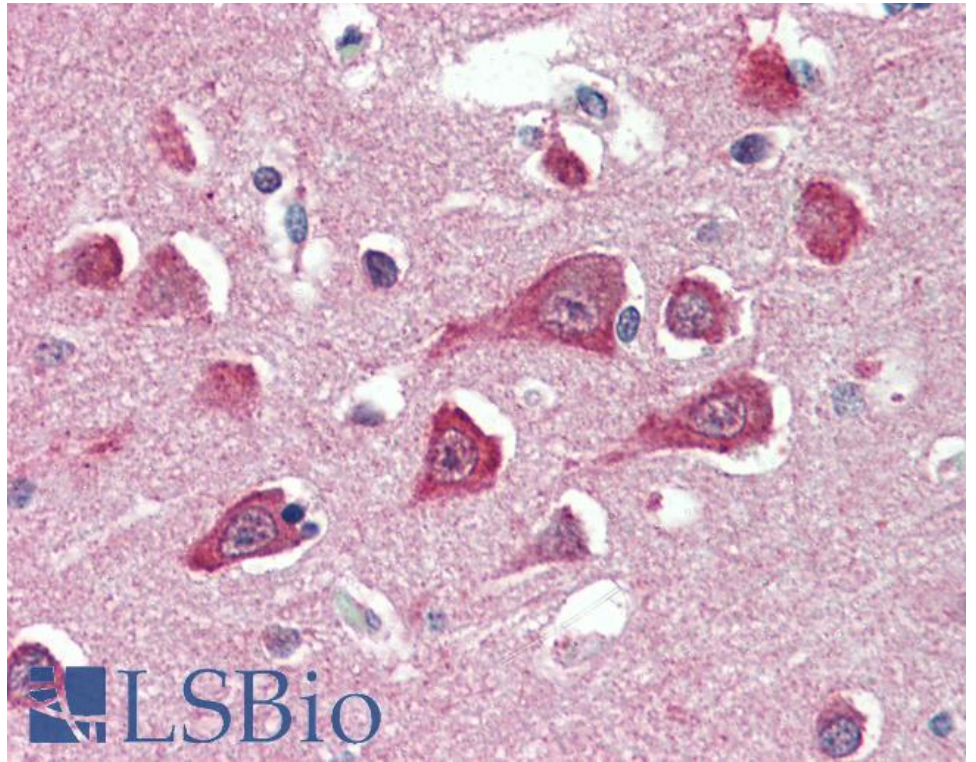
**Peptide ELISA:** antibody detection limit dilution 1:128000.

**IHC:** Paraffin embedded Human Brain (Cortex). Recommended concentration: 5µg/ml.

### Species Reactivity

**Tested:** Human

**Expected from sequence similarity:** Human, Mouse, Rat, Cow



EB08338 (5µg/ml) staining of paraffin embedded Human Cortex. Steamed antigen retrieval with citrate buffer pH 6, AP-staining.