



UK Office

Everest Biotech Ltd

Cherwell Innovation Centre
77 Heyford Park
Upper Heyford
Oxfordshire
OX25 5HD
UK

Enquiries:

info@everestbiotech.com

Sales:

sales@everestbiotech.com

Tech support:

support@everestbiotech.com

Tel: +44 (0)1869 238326

Fax: +44 (0)1869 238327

US Office

Everest Biotech c/o Abcore

405 Maple Street, Suite A106
Ramona,
CA 92065
USA

Inquiries:

info@everestbiotech.com

Sales:

usasales@everestbiotech.com

Tech support:

support@everestbiotech.com

Tel: 888-320-4628 (toll-free)

Fax: 888-841-9041

www.everestbiotech.com

**Research Use Only. Not for
diagnostic or therapeutic use.**

EB08338 - Goat Anti-HRASLS3 / HREV107-3 Antibody

Size: 100µg specific antibody in 200µl



Target Protein

Principal Names: PLA2G16, phospholipase A2, group XVI, AdPLA, H-REV107-1, HRASLS3, HREV107, HREV107-3, MGC118754, HRAS-like suppressor 3, adipose-specific PLA2

Official Symbol: PLAAT3

Accession Number(s): NP_009000.2

Human GeneID(s): [11145](#)

Non-Human GeneID(s): 225845 (mouse), 24913 (rat)

Important Comments: Reported variants represent identical protein:NP_009000.2 and NP_001121675.1).

Immunogen

Peptide with sequence RAPIPEPKPGDLIE-C, from the N Terminus of the protein sequence according to NP_009000.2.

Please note the [peptide](#) is available for sale.

Purification and Storage

Purified from goat serum by ammonium sulphate precipitation followed by antigen affinity chromatography using the immunizing peptide.

Supplied at 0.5 mg/ml in Tris saline, 0.02% sodium azide, pH7.3 with 0.5% bovine serum albumin.

Aliquot and store at -20°C. Minimize freezing and thawing.

Applications Tested

Peptide ELISA: antibody detection limit dilution 1:128000.

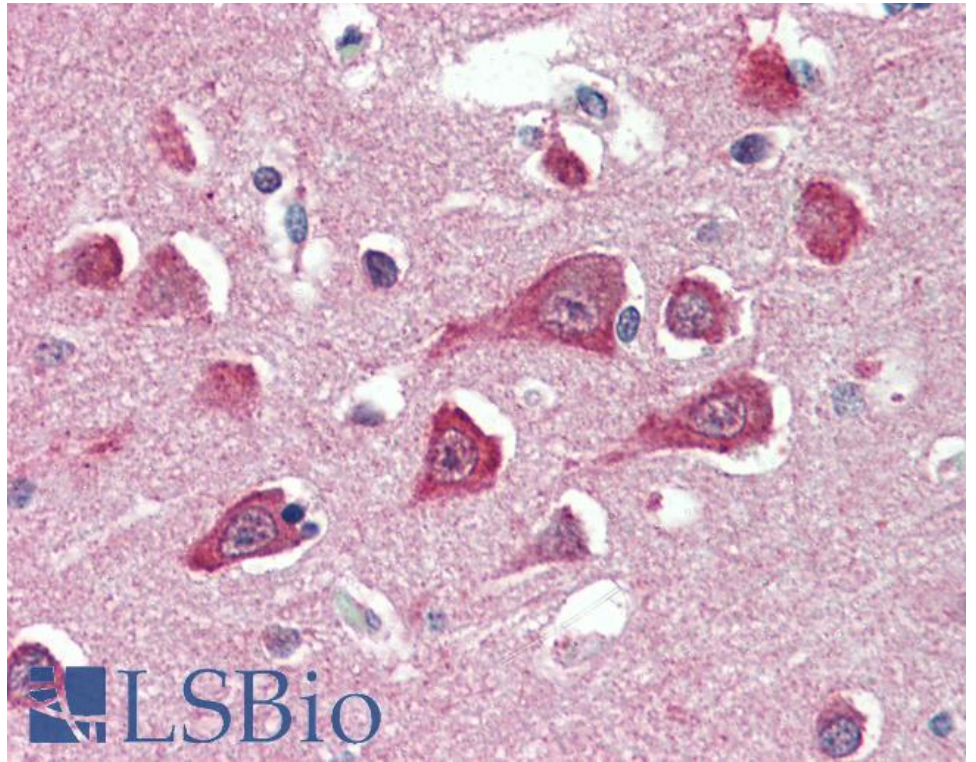
Western blot: Preliminary experiments gave an approx 28kDa band in Human Heart lysates after 0.1µg/ml antibody staining. Please note that currently we cannot find an explanation in the literature for the band we observe given the calculated size of 18.0kDa according to NP_009000.1. The 28kDa band was successfully blocked by incubation with the immunizing peptide.

IHC: Paraffin embedded Human Brain (Cortex). Recommended concentration: 5µg/ml.

Species Reactivity

Tested: Human

Expected from sequence similarity: Human, Mouse, Rat, Cow



EB08338 (5µg/ml) staining of paraffin embedded Human Cortex. Steamed antigen retrieval with citrate buffer pH 6, AP-staining.