



## International Office

### Everest Biotech Ltd

Vector Laboratories, Inc.  
6737 Mowry Ave  
Newark, CA 94560  
United States

Customer Service:

[customerservice@vectorlabs.com](mailto:customerservice@vectorlabs.com)

Technical Service:

[technical@vectorlabs.com](mailto:technical@vectorlabs.com)

Tel: +1 (800) 227-6666

[www.everestbiotech.com](http://www.everestbiotech.com)

**Research Use Only. Not for  
diagnostic or therapeutic use.**

## EB06597 - Goat Anti-HSD11B1 / HDL Antibody

Size: 100µg specific antibody in 200µl



### Target Protein

**Principal Names:** HSD11B1, HDL, 11-DH, HSD11L, MGC13539, 11-beta-HSD1, hydroxysteroid (11-beta) dehydrogenase 1, corticosteroid 11-beta-dehydrogenase isozyme 1

**Official Symbol:** HSD11B1

**Accession Number(s):** NP\_005516.1; NP\_861420.1

**Human GeneID(s):** [3290](#)

**Important Comments:** This antibody is expected to recognise human HSD11B1 protein. Both NP\_005516.1 and NP\_861420.1 variants encode the same protein.

### Immunogen

Peptide with sequence CTSYNMDRFINK, from the C Terminus of the protein sequence according to NP\_005516.1; NP\_861420.1.

Please note the [peptide](#) is available for sale.

### Purification and Storage

Purified from goat serum by ammonium sulphate precipitation followed by antigen affinity chromatography using the immunizing peptide.

Supplied at 0.5 mg/ml in Tris saline, 0.02% sodium azide, pH7.3 with 0.5% bovine serum albumin.

Aliquot and store at -20°C. Minimize freezing and thawing.

### Applications Tested

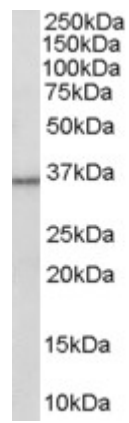
**Peptide ELISA:** antibody detection limit dilution 1:8000.

**Western blot:** Approx 35kDa band observed in Human Liver lysates (calculated MW of 32.4kDa according to NP\_005516.1 and NP\_861420.1). Recommended concentration: 0.3-1µg/ml.

### Species Reactivity

**Tested:** Human

**Expected from sequence similarity:** Human, Cow



EB06597 (0.3 $\mu$ g/ml) staining of Human Liver lysate (35 $\mu$ g protein in RIPA buffer). Primary incubation was 1 hour.  
Detected by chemiluminescence.