



## UK Office

### Everest Biotech Ltd

Cherwell Innovation Centre  
77 Heyford Park  
Upper Heyford  
Oxfordshire  
OX25 5HD  
UK

Enquiries:

[info@everestbiotech.com](mailto:info@everestbiotech.com)

Sales:

[sales@everestbiotech.com](mailto:sales@everestbiotech.com)

Tech support:

[support@everestbiotech.com](mailto:support@everestbiotech.com)

Tel: +44 (0)1869 238326

Fax: +44 (0)1869 238327

## US Office

### Everest Biotech c/o Abcore

405 Maple Street, Suite A106  
Ramona,  
CA 92065  
USA

Inquiries:

[info@everestbiotech.com](mailto:info@everestbiotech.com)

Sales:

[usasales@everestbiotech.com](mailto:usasales@everestbiotech.com)

Tech support:

[support@everestbiotech.com](mailto:support@everestbiotech.com)

Tel: 888-320-4628 (toll-free)

Fax: 888-841-9041

[www.everestbiotech.com](http://www.everestbiotech.com)

**Research Use Only. Not for  
diagnostic or therapeutic use.**

## EB12834 - Goat Anti-HSP60 / HSPD1 (aa333-344) Antibody

Size: 100µg specific antibody in 200µl



### Target Protein

**Principal Names:** HSPD1, heat shock 60kDa protein 1 (chaperonin), CPN60, GROEL, HLD4, HSP-60, HSP60, HSP65, HuCHA60, SPG13, 60 kDa chaperonin, 60 kDa heat shock protein, mitochondrial, P60 lymphocyte protein, chaperonin 60, heat shock protein 65, mitochondrial matrix prote

**Official Symbol:** HSPD1

**Accession Number(s):** NP\_002147.2

**Human GeneID(s):** [3329](#)

**Important Comments:** Reported variants represent identical protein: NP\_955472.1, NP\_002147.2.

### Immunogen

Peptide with sequence C-NLEDVQPHDLGK, from the internal region of the protein sequence according to NP\_002147.2.

Please note the [peptide](#) is available for sale.

### Purification and Storage

Purified from goat serum by ammonium sulphate precipitation followed by antigen affinity chromatography using the immunizing peptide.

Supplied at 0.5 mg/ml in Tris saline, 0.02% sodium azide, pH7.3 with 0.5% bovine serum albumin.

Aliquot and store at -20°C. Minimize freezing and thawing.

### Applications Tested

**Peptide ELISA:** antibody detection limit dilution 1:64000.

**Western blot:** Approx 60kDa band observed in Human and Pig Heart, Kidney and Liver and in Rat Kidney lysates (calculated MW of 61.1kDa according to Human NP\_002147.2 and 60.9kDa according to Pig NP\_001241645.1 and Rat NP\_071565.2 ). Recommended concentration: 0.01-0.1µg/ml. Primary incubation 1 hour at room temperature.

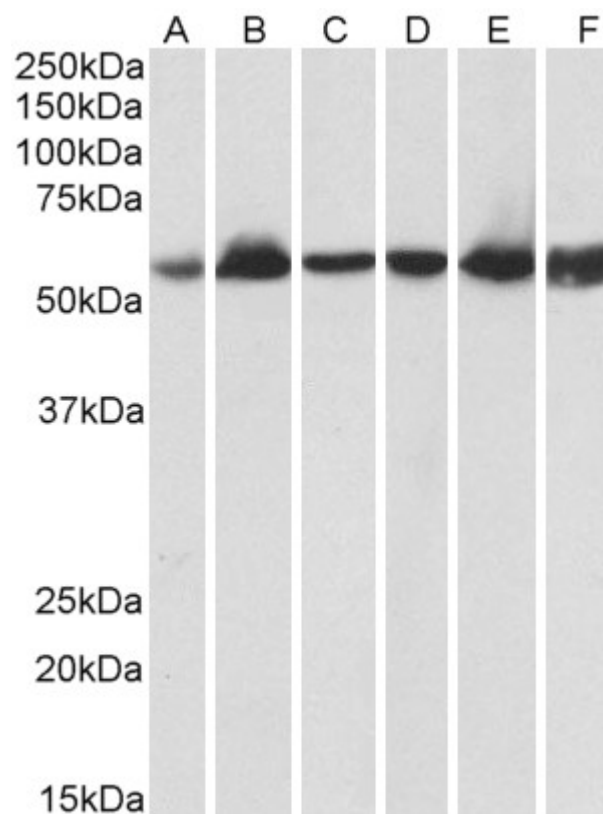
**IHC:** Paraffin embedded Human Kidney. Recommended concentration: 5µg/ml.

**Immunofluorescence:** Strong expression of the protein seen in the mitochondria of HeLa cells and in the cytoplasm of A431 cells. Recommended concentration: 10µg/ml.

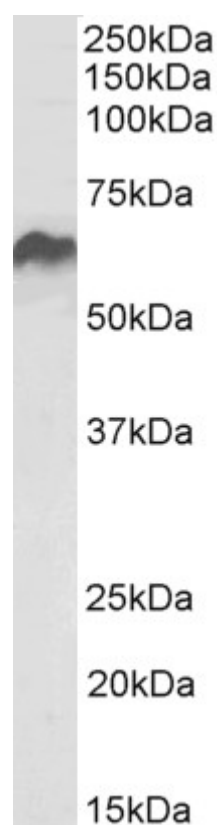
### Species Reactivity

**Tested:** Human, Rat, Pig

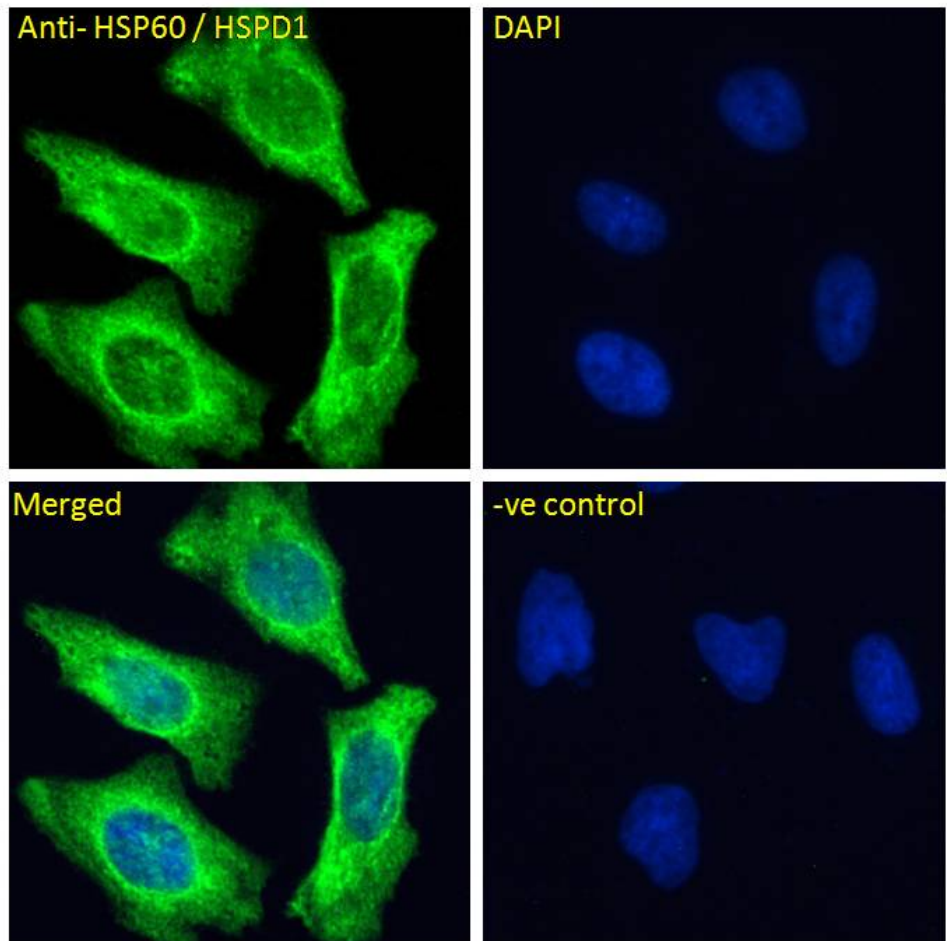
**Expected from sequence similarity:** Human, Dog, Pig, Cow



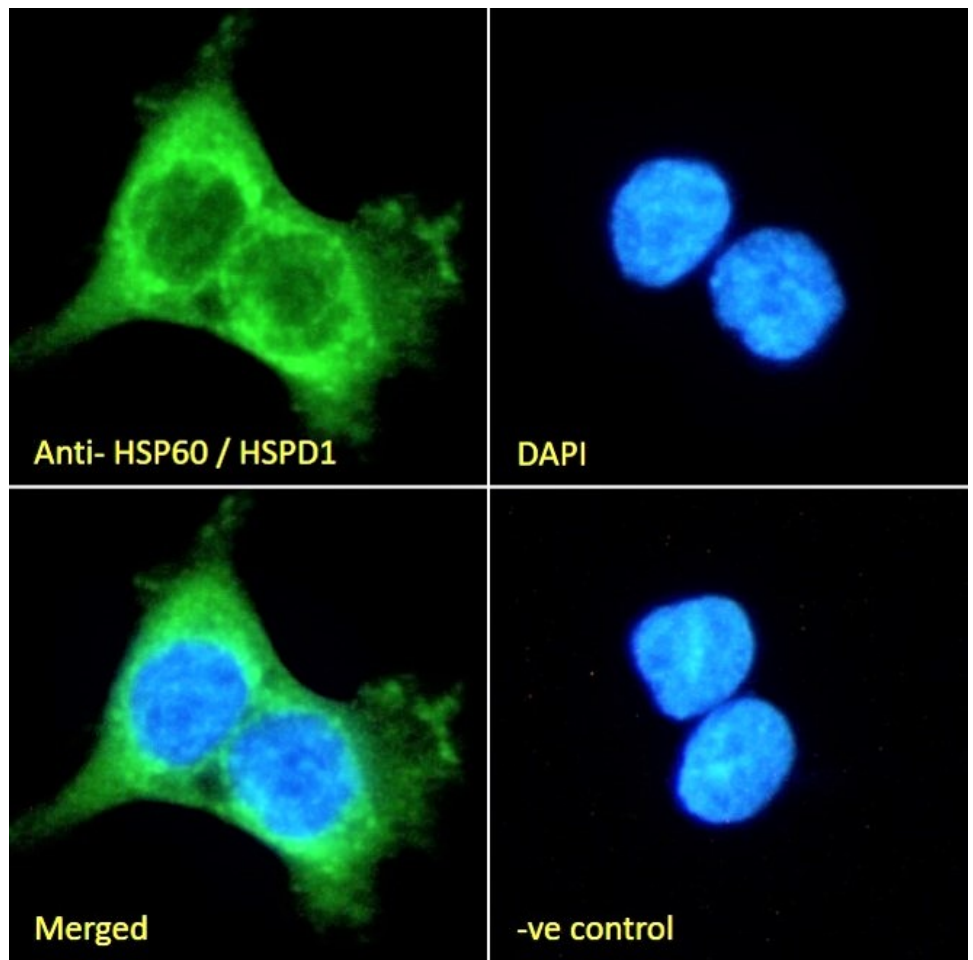
EB12834 (0.03 $\mu$ g/ml) staining of Human Heart (A), Kidney (B) and Liver (C) lysate and in Pig Heart (D), Kidney (E) and Liver (F) lysate (35 $\mu$ g protein in RIPA buffer). Detected by chemiluminescence.



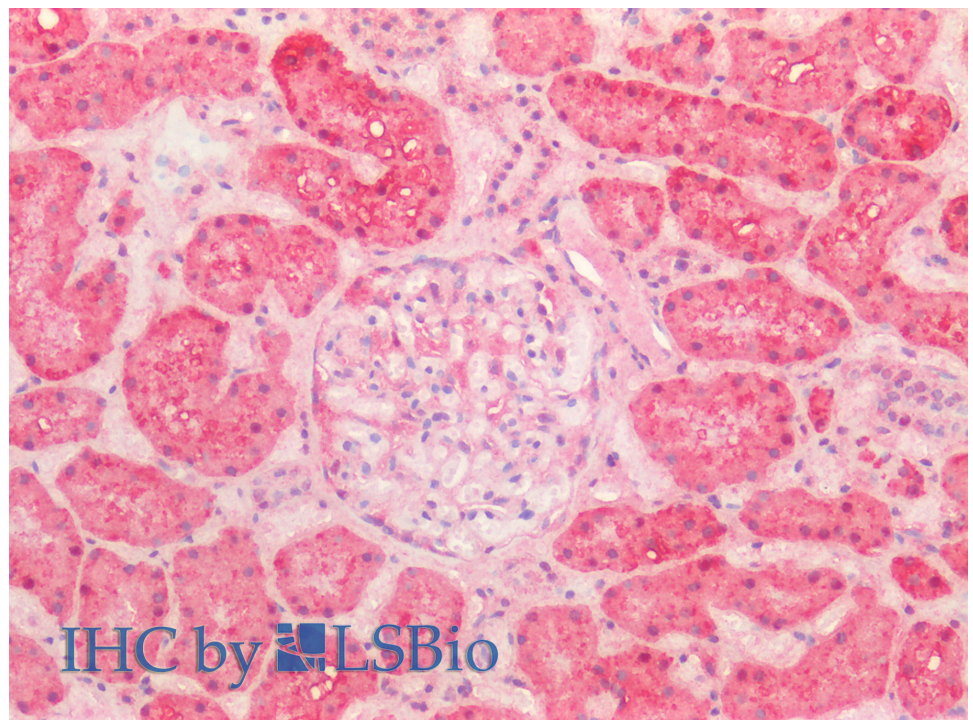
EB12834 (0.1 $\mu$ g/ml) staining of Rat Kidney lysate (35 $\mu$ g protein in RIPA buffer). Detected by chemiluminescence.



EB12834 Immunofluorescence analysis of paraformaldehyde fixed HeLa cells, permeabilized with 0.15% Triton. Primary incubation 1hr (10ug/ml) followed by Alexa Fluor 488 secondary antibody (4ug/ml), showing Mitochondrial staining. The nuclear stain is DAPI (blue). Negative control: Unimmunized goat IgG (10ug/ml) followed by Alexa Fluor 488 secondary antibody (4ug/ml).



EB12834 Immunofluorescence analysis of paraformaldehyde fixed A431 cells, permeabilized with 0.15% Triton. Primary incubation 1hr (10ug/ml) followed by Alexa Fluor 488 secondary antibody (2ug/ml), showing cytoplasmic staining. The nuclear stain is DAPI (blue). Negative control: Unimmunized goat IgG (10ug/ml) followed by Alexa Fluor 488 secondary antibody (2ug/ml).



EB12834 (5µg/ml) staining of paraffin embedded Human Kidney. Steamed antigen retrieval with citrate buffer pH 6, AP-staining.