



UK Office

Everest Biotech Ltd

Cherwell Innovation Centre
77 Heyford Park
Upper Heyford
Oxfordshire
OX25 5HD
UK

Enquiries:

info@everestbiotech.com

Sales:

sales@everestbiotech.com

Tech support:

support@everestbiotech.com

Tel: +44 (0)1869 238326

Fax: +44 (0)1869 238327

US Office

Everest Biotech c/o Abcore

405 Maple Street, Suite A106
Ramona,
CA 92065
USA

Inquiries:

info@everestbiotech.com

Sales:

usasales@everestbiotech.com

Tech support:

support@everestbiotech.com

Tel: 888-320-4628 (toll-free)

Fax: 888-841-9041

www.everestbiotech.com

**Research Use Only. Not for
diagnostic or therapeutic use.**

EB12857 - Goat Anti-HSPA5 / GRP78 Antibody

Size: 100µg specific antibody in 200µl



Target Protein

Principal Names: HSPA5, heat shock 70kDa protein 5 (glucose-regulated protein, 78kDa), BIP, GRP78, HEL-S-89n, MIF2, 78 kDa glucose-regulated protein, endoplasmic reticulum lumenal Ca(2+)-binding protein grp78, epididymis secretory sperm binding protein Li 89n, immunoglobulin

Official Symbol: HSPA5

Accession Number(s): NP_005338.1

Human GeneID(s): [3309](#)

Immunogen

Peptide with sequence C-ESHQDADIEDFK, from the internal region (near C Terminus) of the protein sequence according to NP_005338.1.

Please note the [peptide](#) is available for sale.

Purification and Storage

Purified from goat serum by ammonium sulphate precipitation followed by antigen affinity chromatography using the immunizing peptide.

Supplied at 0.5 mg/ml in Tris saline, 0.02% sodium azide, pH7.3 with 0.5% bovine serum albumin.

Aliquot and store at -20°C. Minimize freezing and thawing.

Applications Tested

Peptide ELISA: antibody detection limit dilution 1:16000.

Western blot: Approx 75kDa band observed in lysates of cell lines HepG2 and MCF7 and in Mouse Liver lysates, and approx. 80kDa band in Mouse Testis and Rat Brain lysates (calculated MW of 72.3kDa according to Human NP_005338.1, Mouse NP_071705.3 and Rat NP_037215.1). This molecular weight is routinely observed by other sources.

Recommended concentration: 0.3-1µg/ml. Primary incubation was 1 hour.

IHC: Paraffin embedded Human Brain (Cortex). Recommended concentration: 5µg/ml.

Immunofluorescence: Expression of the protein seen in the cytoplasm of HeLa cells.

Recommended concentration: 5µg/ml

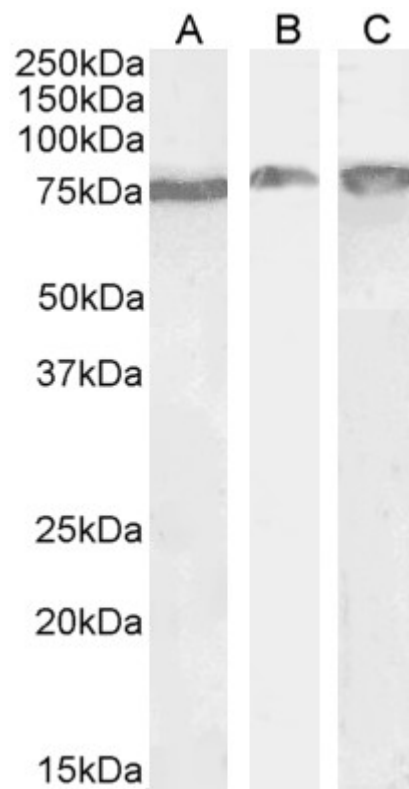
Species Reactivity

Tested: Human, Mouse, Rat

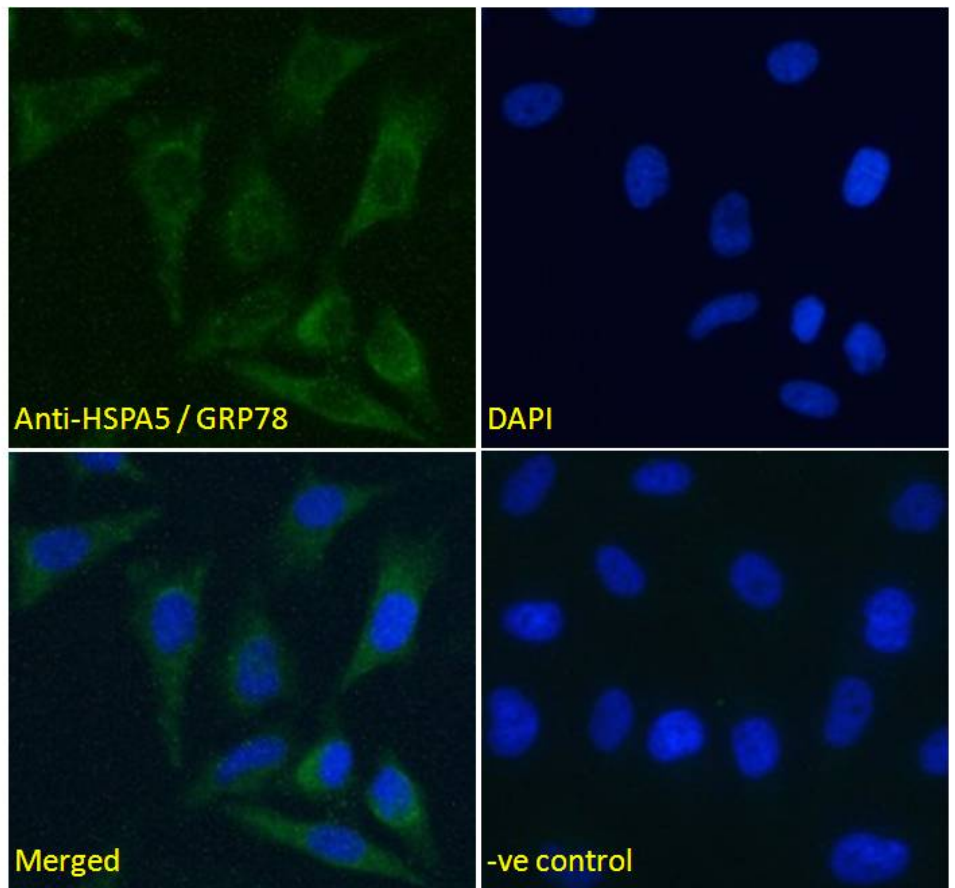
Expected from sequence similarity: Human



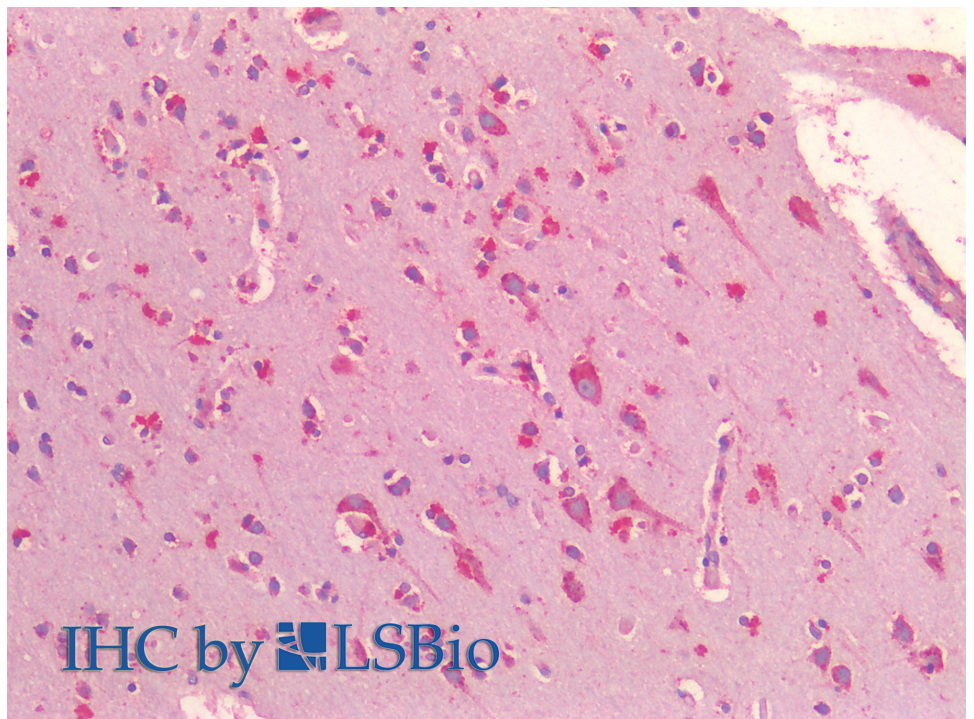
EB12857 (1µg/ml) staining of HepG2 (A) and MCF7 (B) lysates (35µg protein in RIPA buffer).Detected by chemiluminescence.



EB12857 (0.3µg/ml) staining of Mouse Liver (A) and Testes (B) and (0.5ug/ml) Rat Brain (C) lysate (35µg protein in RIPA buffer). Detected by chemiluminescence.



EB12857 Immunofluorescence analysis of paraformaldehyde fixed HeLa cells, permeabilized with 0.15% Triton. Primary incubation 1hr (5ug/ml) followed by Alexa Fluor 488 secondary antibody (2ug/ml), showing cytoplasmic staining. The nuclear stain is DAPI (blue). Negative control: Unimmunized goat IgG (5ug/ml) followed by Alexa Fluor 488 secondary antibody (2ug/ml).



EB12857 (5µg/ml) staining of paraffin embedded Human Cortex. Steamed antigen retrieval with citrate buffer pH 6, AP-staining.