

UK Office

Everest Biotech Ltd

Cherwell Innovation Centre
77 Heyford Park
Upper Heyford
Oxfordshire
OX25 5HD
UK

Enquiries:

info@everestbiotech.com

Sales:

sales@everestbiotech.com

Tech support:

support@everestbiotech.com

Tel: +44 (0)1869 238326

www.everestbiotech.com

**Research Use Only. Not for
diagnostic or therapeutic use.**

EB09347 - Goat Anti-HTR7 / 5-HT7 Antibody

Size: 100µg specific antibody in 200µl



Target Protein

Principal Names: HTR7, 5-hydroxytryptamine (serotonin) receptor 7 (adenylate cyclase-coupled), 5-HT7, 5-hydroxytryptamine receptor 7, OTTHUMP00000020077, OTTHUMP00000020078, OTTHUMP00000020079, serotonin 5-HT-7 receptor

Official Symbol: HTR7

Accession Number(s): NP_000863.1

Human GeneID(s): [3363](#)

Important Comments: This antibody is expected to recognize isoform a (NP_000863.1) only.

Immunogen

Peptide with sequence QNADYCRKKGHDS, from the C Terminus of the protein sequence according to NP_000863.1.

Please note the [peptide](#) is available for sale.

Purification and Storage

Purified from goat serum by ammonium sulphate precipitation followed by antigen affinity chromatography using the immunizing peptide.

Supplied at 0.5 mg/ml in Tris saline, 0.02% sodium azide, pH7.3 with 0.5% bovine serum albumin.

Aliquot and store at -20°C. Minimize freezing and thawing.

Applications Tested

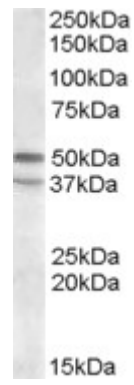
Peptide ELISA: antibody detection limit dilution 1:16000.

Western blot: Approx 50kDa band observed in lysates of cell line KELLY (calculated MW of 49.5kDa according to NP_000863.1). Recommended concentration: 1-3µg/ml. An additional band of unknown identity was also consistently observed at 37kDa. This band was successfully blocked by incubation with the immunizing peptide. We would appreciate any feedback from people in the field - have any such results been reported with other antibodies/lysates? Have any further splice variants/modified forms been reported?

Species Reactivity

Tested: Human

Expected from sequence similarity: Human



EB09347 (1 μ g/ml) staining of KELLY lysate (35 μ g protein in RIPA buffer). Primary incubation was 1 hour.
Detected by chemiluminescence.