



International Office

Everest Biotech Ltd

Vector Laboratories, Inc.
6737 Mowry Ave
Newark, CA 94560
United States

Customer Service:

customerservice@vectorlabs.com

Technical Service:

technical@vectorlabs.com

Tel: +1 (800) 227-6666

www.everestbiotech.com

**Research Use Only. Not for
diagnostic or therapeutic use.**

EB13103 - Goat Anti-Perilipin 1 (C Terminus) Antibody

Size: 100µg specific antibody in 200µl



Target Protein

Principal Names: PLIN1, Perilipin 1, Perilipin1, Plin, perilipin, PERI, lipid droplet-associated protein

Official Symbol: PLIN1

Accession Number(s): NP_002657.3

Human GeneID(s): [5346](#)

Important Comments: This is an alternative product to EB07728.

Immunogen

Peptide with sequence PAPRLAQPRRSC, from the C Terminus of the protein sequence according to NP_002657.3.

Please note the [peptide](#) is available for sale.

Purification and Storage

Purified from goat serum by ammonium sulphate precipitation followed by antigen affinity chromatography using the immunizing peptide.

Supplied at 0.5 mg/ml in Tris saline, 0.02% sodium azide, pH7.3 with 0.5% bovine serum albumin.

Aliquot and store at -20°C. Minimize freezing and thawing.

Applications Tested

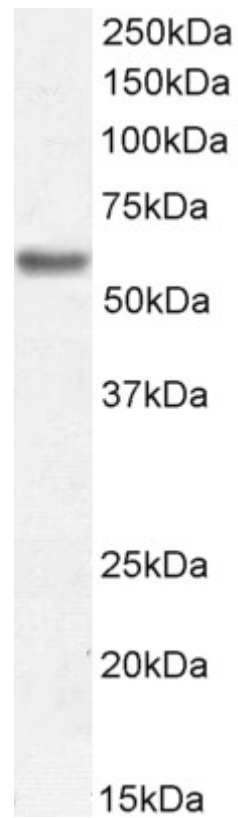
Peptide ELISA: antibody detection limit dilution 1:2000.

Western blot: Approx 55-58kDa band observed in Human Adipose tissue lysates (calculated MW of 56.0kDa according to Human NP_002657.3). Recommended concentration: 0.03-0.1µg/ml. Primary incubation 1 hour at room temperature.

Species Reactivity

Tested: Human

Expected from sequence similarity: Human



EB13103 (0.05 μ g/ml) staining of Human Adipose Tissue lysate (35 μ g protein in RIPA buffer). Detected by chemiluminescence.