



UK Office

Everest Biotech Ltd

Cherwell Innovation Centre
77 Heyford Park
Upper Heyford
Oxfordshire
OX25 5HD
UK

Enquiries:

info@everestbiotech.com

Sales:

sales@everestbiotech.com

Tech support:

support@everestbiotech.com

Tel: +44 (0)1869 238326

www.everestbiotech.com

**Research Use Only. Not for
diagnostic or therapeutic use.**

EB13102 - Goat Anti-Perilipin 1 (C Terminus) Antibody

Size: 100µg specific antibody in 200µl



Target Protein

Principal Names: PERI, PLIN, PLIN1, FPLD4, Plin, PERIA, Peri, Perilipin1, Perilipin 1

Official Symbol: PLIN1

Accession Number(s): NP_002657.3

Human GeneID(s): [5346](#)

Non-Human GeneID(s): 103968 (mouse), 25629 (rat)

Important Comments: This is an alternative product to EB07728.

Immunogen

Peptide with sequence RVSDSFFRPSVMEPC, from the C Terminus of the protein sequence according to NP_002657.3.

Please note the [peptide](#) is available for sale.

Purification and Storage

Purified from goat serum by ammonium sulphate precipitation followed by antigen affinity chromatography using the immunizing peptide.

Supplied at 0.5 mg/ml in Tris saline, 0.02% sodium azide, pH7.3 with 0.5% bovine serum albumin.

Aliquot and store at -20°C. Minimize freezing and thawing.

Applications Tested

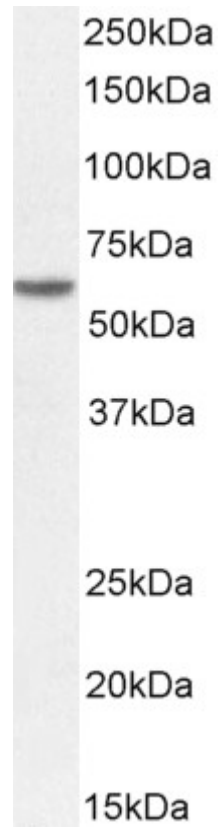
Peptide ELISA: antibody detection limit dilution 1:128000.

Western blot: Approx 55-58kDa band observed in Human Adipose tissue lysates (calculated MW of 56.0kDa according to Human NP_002657.3). Recommended concentration: 0.1-0.3ug/ml. Primary incubation 1 hour at room temperature.

Species Reactivity

Tested: Human

Expected from sequence similarity: Human



EB13102 (0.3 μ g/ml) staining of Human Adipose tissue lysate (35 μ g protein in RIPA buffer). Detected by chemiluminescence.