



## UK Office

### Everest Biotech Ltd

Cherwell Innovation Centre  
77 Heyford Park  
Upper Heyford  
Oxfordshire  
OX25 5HD  
UK

Enquiries:

[info@everestbiotech.com](mailto:info@everestbiotech.com)

Sales:

[sales@everestbiotech.com](mailto:sales@everestbiotech.com)

Tech support:

[support@everestbiotech.com](mailto:support@everestbiotech.com)

Tel: +44 (0)1869 238326

[www.everestbiotech.com](http://www.everestbiotech.com)

**Research Use Only. Not for  
diagnostic or therapeutic use.**

## EB06359 - Goat Anti-IBP / DEF6 Antibody

Size: 100µg specific antibody in 200µl



### Target Protein

**Principal Names:** DEF6, IBP, differentially expressed in FDCP 6 homolog, RP3-329A5.5, SLAT, IRF4-binding protein, OTTHUMP00000016251, differentially expressed in FDCP 6 homolog (mouse), SWAP70L, SWAP-70-like adaptor protein of T cells

**Official Symbol:** DEF6

**Accession Number(s):** NP\_071330.3

**Human GeneID(s):** [50619](#)

**Non-Human GeneID(s):** 23853 (mouse)

### Immunogen

Peptide with sequence ALRKELLKSIWYA-C, from the N Terminus of the protein sequence according to NP\_071330.3.

Please note the [peptide](#) is available for sale.

### Purification and Storage

Purified from goat serum by ammonium sulphate precipitation followed by antigen affinity chromatography using the immunizing peptide.

Supplied at 0.5 mg/ml in Tris saline, 0.02% sodium azide, pH7.3 with 0.5% bovine serum albumin.

Aliquot and store at -20°C. Minimize freezing and thawing.

### Applications Tested

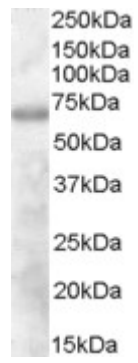
**Peptide ELISA:** antibody detection limit dilution 1:2000.

**Western blot:** Approx. 70kDa band observed in Human Thymus lysates (calculated MW of 73.9kDa according to NP\_071330.3). Recommended concentration: 1-3µg/ml.

### Species Reactivity

**Tested:** Human

**Expected from sequence similarity:** Human, Mouse, Rat, Dog, Pig, Cow



EB06359 (1 $\mu$ g/ml) staining of Human Thymus lysate (35 $\mu$ g protein in RIPA buffer). Primary incubation was 1 hour. Detected by chemiluminescence.