

## International Office

### Everest Biotech Ltd

Vector Laboratories, Inc.  
6737 Mowry Ave  
Newark, CA 94560  
United States

Customer Service:

[customerservice@vectorlabs.com](mailto:customerservice@vectorlabs.com)

Technical Service:

[technical@vectorlabs.com](mailto:technical@vectorlabs.com)

Tel: +1 (800) 227-6666

[www.everestbiotech.com](http://www.everestbiotech.com)

**Research Use Only. Not for  
diagnostic or therapeutic use.**

## EB11753 - Goat Anti-ICAM1 Antibody

Size: 100µg specific antibody in 200µl



### Target Protein

**Principal Names:** BB2, CD54, cell surface glycoprotein P3.58, human rhinovirus receptor, ICAM1, ICAM-1, intercellular adhesion molecule 1, intercellular adhesion molecule 1 (CD54), human rhinovirus receptor, major group rhinovirus receptor, P3.58

**Official Symbol:** ICAM1

**Accession Number(s):** NP\_000192.2

**Human GeneID(s):** [3383](#)

**Important Comments:** The immunizing peptide represents part of the extracellular domain, and it does not overlap any known glycosite.

### Immunogen

Peptide with sequence SNCPDGQSTAKT, from the internal region of the protein sequence according to NP\_000192.2.

Please note the [peptide](#) is available for sale.

### Purification and Storage

Purified from goat serum by ammonium sulphate precipitation followed by antigen affinity chromatography using the immunizing peptide.

Supplied at 0.5 mg/ml in Tris saline, 0.02% sodium azide, pH7.3 with 0.5% bovine serum albumin.

Aliquot and store at -20°C. Minimize freezing and thawing.

### Applications Tested

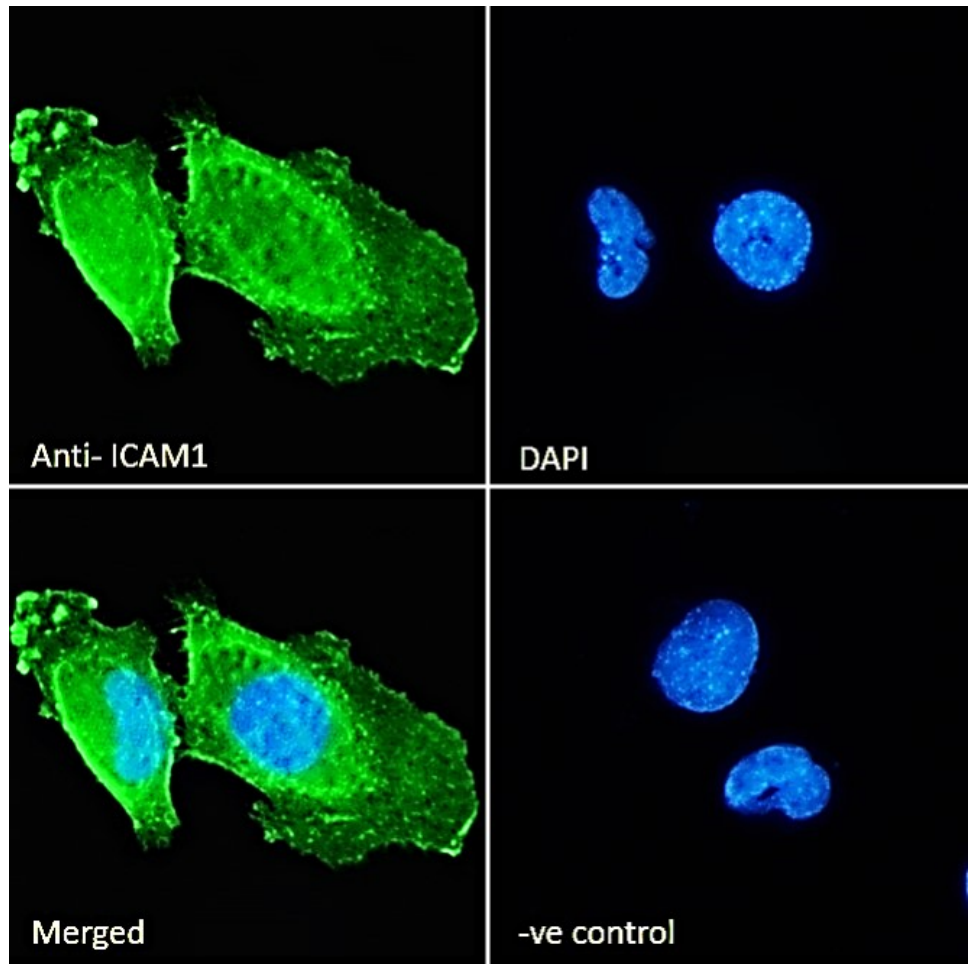
**Peptide ELISA:** antibody detection limit dilution 1:4000.

**Immunofluorescence:** Strong expression of the protein seen in the plasma membrane and cytoplasm of U251 cells. Recommended concentration: 10µg/ml.

### Species Reactivity

**Tested:** Human

**Expected from sequence similarity:** Human



EB11753 Immunofluorescence analysis of paraformaldehyde fixed U251 cells, permeabilized with 0.15% Triton. Primary incubation 1hr (10ug/ml) followed by Alexa Fluor 488 secondary antibody (2ug/ml), showing cytoplasmic and membrane staining. The nuclear stain is DAPI (blue). Negative control: Unimmunized goat IgG (10ug/ml) followed by Alexa Fluor 488 secondary antibody (2ug/ml).