

## UK Office

### Everest Biotech Ltd

Cherwell Innovation Centre  
77 Heyford Park  
Upper Heyford  
Oxfordshire  
OX25 5HD  
UK

Enquiries:

[info@everestbiotech.com](mailto:info@everestbiotech.com)

Sales:

[sales@everestbiotech.com](mailto:sales@everestbiotech.com)

Tech support:

[support@everestbiotech.com](mailto:support@everestbiotech.com)

Tel: +44 (0)1869 238326

[www.everestbiotech.com](http://www.everestbiotech.com)

**Research Use Only. Not for  
diagnostic or therapeutic use.**

## EB11900 - Goat Anti-ICAM4 (aa169-182) Antibody

Size: 100µg specific antibody in 200µl



### Target Protein

**Principal Names:**  $\beta$ -character-test, ICAM4, intercellular adhesion molecule 4

(Landsteiner-Wiener blood group), CD242, LW, CD242 antigen, LW blood group protein, Landsteiner-Wiener blood group antigen a, Landsteiner-Wiener blood group glycoprotein, intercellular adhesion molecule 4, intercellular adhesion molecule 4 (LW blood group)

**Official Symbol:** ICAM4

**Accession Number(s):** NP\_001535.1; NP\_071772.1

**Human GeneID(s):** [3386](#)

**Important Comments:** This antibody is expected to recognize isoform 1 (NP\_001535.1) and isoform 2 (NP\_071772.1) only.

### Immunogen

Peptide with sequence C-RHGSRVIYSESLER, from the internal region of the protein sequence according to NP\_001535.1; NP\_071772.1.

Please note the [peptide](#) is available for sale.

### Purification and Storage

Purified from goat serum by ammonium sulphate precipitation followed by antigen affinity chromatography using the immunizing peptide.

Supplied at 0.5 mg/ml in Tris saline, 0.02% sodium azide, pH7.3 with 0.5% bovine serum albumin.

Aliquot and store at -20°C. Minimize freezing and thawing.

### Applications Tested

**Peptide ELISA:** antibody detection limit dilution 1:64000.

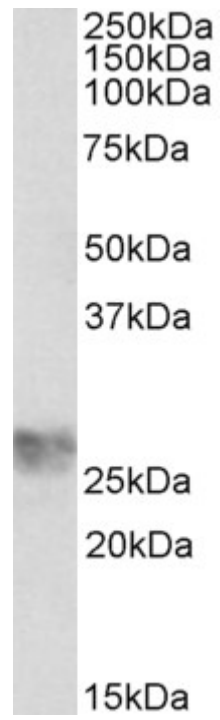
**Western blot:** Approx 28kDa band observed in Human Umbilical Cord and in Erythrocytes lysates (calculated MW of 29.3kDa according to NP\_001535.1).

Recommended concentration: 1-3µg/ml.

### Species Reactivity

**Tested:** Human

**Expected from sequence similarity:** Human



EB11900 (1 $\mu$ g/ml) staining of Human Umbilical Cord lysate (35 $\mu$ g protein in RIPA buffer). Primary incubation was 1 hour. Detected by chemiluminescence.