

UK Office

Everest Biotech Ltd

Cherwell Innovation Centre
77 Heyford Park
Upper Heyford
Oxfordshire
OX25 5HD
UK

Enquiries:

info@everestbiotech.com

Sales:

sales@everestbiotech.com

Tech support:

support@everestbiotech.com

Tel: +44 (0)1869 238326

www.everestbiotech.com

**Research Use Only. Not for
diagnostic or therapeutic use.**

EB07506 - Goat Anti-ICAM5 precursor Antibody

Size: 100µg specific antibody in 200µl



Target Protein

Principal Names: ICAM5, intercellular adhesion molecule 5, telencephalin, TLCN, TLN, intercellular adhesion molecule 5, telencephalin

Official Symbol: ICAM5

Accession Number(s): NP_003250.3

Human GeneID(s): [7087](#)

Non-Human GeneID(s): 15898 (mouse), 313785 (rat)

Immunogen

Peptide with sequence C-ESPAEGEVFAIQ, from the C Terminus of the protein sequence according to NP_003250.3.

Please note the [peptide](#) is available for sale.

Purification and Storage

Purified from goat serum by ammonium sulphate precipitation followed by antigen affinity chromatography using the immunizing peptide.

Supplied at 0.5 mg/ml in Tris saline, 0.02% sodium azide, pH7.3 with 0.5% bovine serum albumin.

Aliquot and store at -20°C. Minimize freezing and thawing.

Applications Tested

Peptide ELISA: antibody detection limit dilution 1:128000.

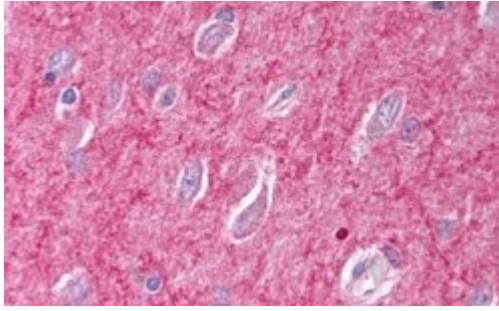
Western blot: Preliminary experiments gave an approx 200-250kDa band in lysates of Human Brain (Frontal Cortex and Hippocampus) and Mouse Brain after 0.05 µg/ml antibody staining. Please note that currently we cannot find an explanation in the literature for the band we observe given the calculated size of 97.2kDa according to NP_003250.2. The 200-250kDa band was successfully blocked by incubation with the immunizing peptide. We would appreciate any feedback from people in the field - have any results been reported with other antibodies/lysates? Have any further splice variants/modified forms been reported?

IHC: In paraffin embedded Human Brain (Cerebral Cortex) shows axon/dendrite staining leaving cell bodies relatively unstained. Recommended concentration, 2-4µg/ml.

Species Reactivity

Tested: Human

Expected from sequence similarity: Human, Mouse, Rat, Pig, Cow



EB07506 (2.5µg/ml) staining of paraffin embedded Human Brain (Cerebral Cortex). Steamed antigen retrieval with citrate buffer pH 6, AP-staining.