



UK Office

Everest Biotech Ltd

Cherwell Innovation Centre
77 Heyford Park
Upper Heyford
Oxfordshire
OX25 5HD
UK

Enquiries:

info@everestbiotech.com

Sales:

sales@everestbiotech.com

Tech support:

support@everestbiotech.com

Tel: +44 (0)1869 238326

Fax: +44 (0)1869 238327

US Office

Everest Biotech c/o Abcore

405 Maple Street, Suite A106
Ramona,
CA 92065
USA

Inquiries:

info@everestbiotech.com

Sales:

usasales@everestbiotech.com

Tech support:

support@everestbiotech.com

Tel: 888-320-4628 (toll-free)

Fax: 888-841-9041

www.everestbiotech.com

**Research Use Only. Not for
diagnostic or therapeutic use.**

EB10995 - Goat Anti-IDH3A Antibody

Size: 100µg specific antibody in 200µl



Target Protein

Principal Names: IDH3A, isocitrate dehydrogenase 3 (NAD+) alpha, H-IDH alpha, NAD(+)-specific ICDH subunit alpha, NAD(H)-specific isocitrate dehydrogenase alpha subunit, NAD+-specific ICDH, isocitrate dehydrogenase (NAD+) alpha chain, isocitrate dehydrogenase [NAD] subunit alpha, mitochondrial, isocitric dehydrogenase subunit alpha

Official Symbol: IDH3A

Accession Number(s): NP_005521.1

Human GeneID(s): [3419](#)

Non-Human GeneID(s): 67834 (mouse), 114096 (rat)

Immunogen

Peptide with sequence DFTEEICRRVKDLD, from the C Terminus of the protein sequence according to NP_005521.1.

Please note the [peptide](#) is available for sale.

Purification and Storage

Purified from goat serum by ammonium sulphate precipitation followed by antigen affinity chromatography using the immunizing peptide.

Supplied at 0.5 mg/ml in Tris saline, 0.02% sodium azide, pH7.3 with 0.5% bovine serum albumin.

Aliquot and store at -20°C. Minimize freezing and thawing.

Applications Tested

Peptide ELISA: antibody detection limit dilution 1:32000.

Western blot: Approx 37kDa band observed in lysates of Human Lymph Nodes, and of cell line DAUDI, and 38kDa in Human, Mouse and Rat Spleen lysates and in Pig Spleen and Skeletal Muscle lysates (calculated MW of 39.6kDa according to NP_005521.1).

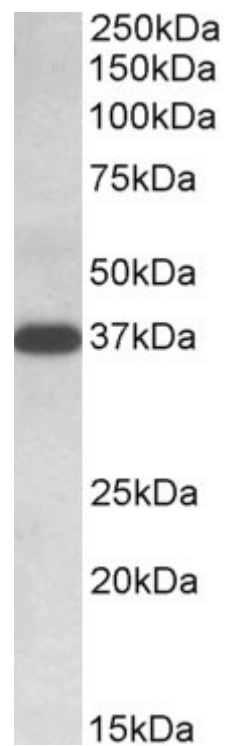
Recommended concentration: 0.1-0.3µg/ml. Primary incubation was 1 hour.

IHC: Paraffin embedded Human Thymus. Recommended concentration: 3.75µg/ml.

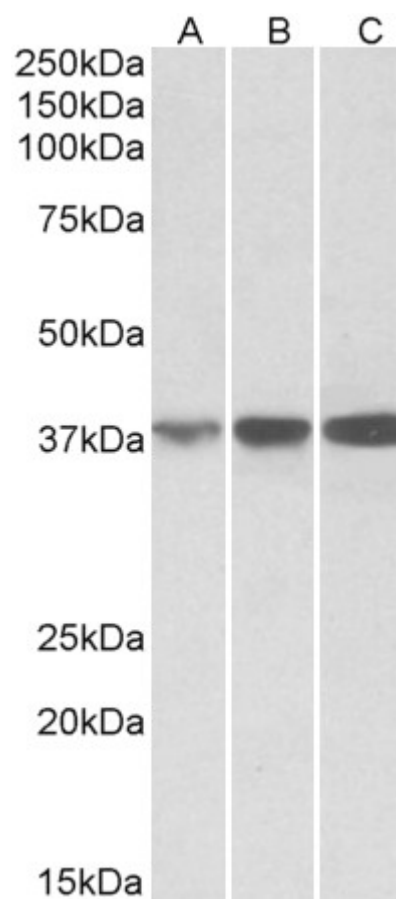
Species Reactivity

Tested: Human, Mouse, Rat, Pig

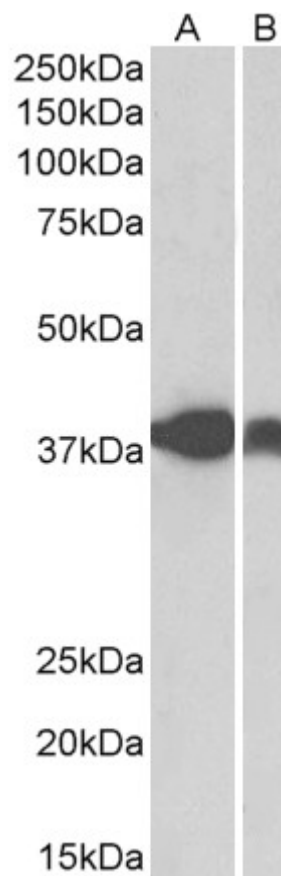
Expected from sequence similarity: Human, Mouse, Rat, Dog, Pig, Cow



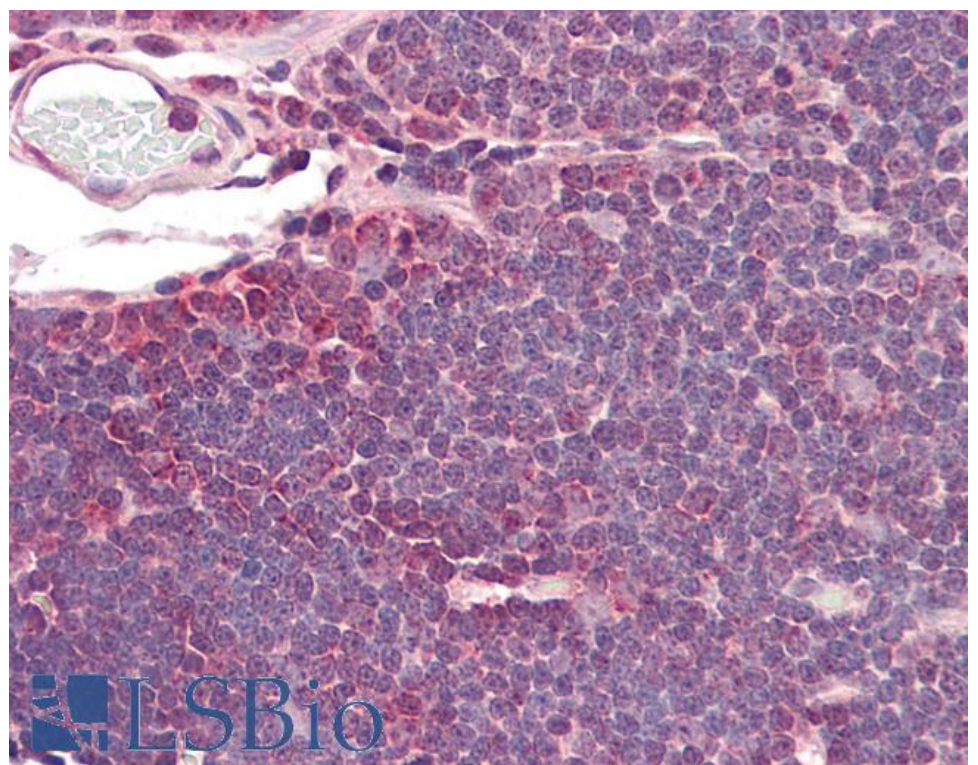
EB10995 (0.1µg/ml) staining of Human Lymph Nodes lysate (35µg protein in RIPA buffer). Detected by chemiluminescence.



EB10995 (0.1µg/ml) staining of Human (A), Mouse (B) and Rat (C) Spleen lysates (35µg protein in RIPA buffer). Detected by chemiluminescence.



EB10995 (0.3 μ g/ml) staining of Pig Spleen (A) and Pig Skeletal Muscle (B) lysates (35 μ g protein in RIPA buffer). Detected by chemiluminescence.



EB10995 (3.75 μ g/ml) staining of paraffin embedded Human Thymus. Steamed antigen retrieval with citrate buffer pH 6, AP-staining.