



## UK Office

### Everest Biotech Ltd

Cherwell Innovation Centre  
77 Heyford Park  
Upper Heyford  
Oxfordshire  
OX25 5HD  
UK

Enquiries:

[info@everestbiotech.com](mailto:info@everestbiotech.com)

Sales:

[sales@everestbiotech.com](mailto:sales@everestbiotech.com)

Tech support:

[support@everestbiotech.com](mailto:support@everestbiotech.com)

Tel: +44 (0)1869 238326

Fax: +44 (0)1869 238327

## US Office

### Everest Biotech c/o Abcore

405 Maple Street, Suite A106  
Ramona,  
CA 92065  
USA

Inquiries:

[info@everestbiotech.com](mailto:info@everestbiotech.com)

Sales:

[usasales@everestbiotech.com](mailto:usasales@everestbiotech.com)

Tech support:

[support@everestbiotech.com](mailto:support@everestbiotech.com)

Tel: 888-320-4628 (toll-free)

Fax: 888-841-9041

[www.everestbiotech.com](http://www.everestbiotech.com)

**Research Use Only. Not for  
diagnostic or therapeutic use.**

## EB10997 - Goat Anti-IDH3B (aa369-383) Antibody

Size: 100µg specific antibody in 200µl



### Target Protein

**Principal Names:** IDH3B, isocitrate dehydrogenase 3 (NAD+) beta, FLJ11043, H-IDHB, MGC903, RP46, NAD(+)-specific ICDH subunit beta, NAD+-specific ICDH, NAD+-specific isocitrate dehydrogenase b subunit, NAD+-specific isocitrate dehydrogenase beta, isocitrate dehydrogenase [NAD] subunit beta, mitochondrial, isocitrate dehydrogenase, NAD(+)-specific, mitochondrial, beta subunit, isocitric dehydrogenase subunit beta

**Official Symbol:** IDH3B

**Accession Number(s):** NP\_008830.2; NP\_777281.1

**Human GeneID(s):** [3420](#)

**Non-Human GeneID(s):** 170718 (mouse), 94173 (rat)

**Important Comments:** This antibody is expected to recognize isoform a (NP\_008830.2) and isoform c (NP\_777281.1).

### Immunogen

Peptide with sequence C-TTDFIKSVIGHLQTK, from the C Terminus of the protein sequence according to NP\_008830.2; NP\_777281.1.

Please note the [peptide](#) is available for sale.

### Purification and Storage

Purified from goat serum by ammonium sulphate precipitation followed by antigen affinity chromatography using the immunizing peptide.

Supplied at 0.5 mg/ml in Tris saline, 0.02% sodium azide, pH7.3 with 0.5% bovine serum albumin.

Aliquot and store at -20°C. Minimize freezing and thawing.

### Applications Tested

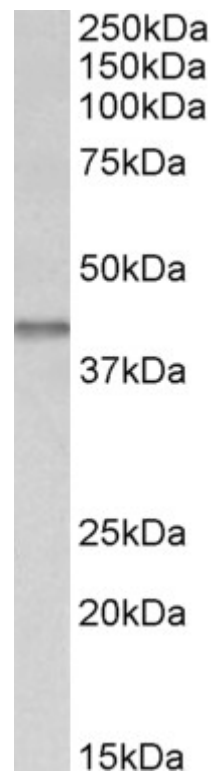
**Peptide ELISA:** antibody detection limit dilution 1:16000.

**Western blot:** Approx 40kDa band observed in lysates of Mouse fetal Kidney and fetal Skeletal Muscle and of cell line NIH3T3 (calculated MW of 42.2kDa according to Human NP\_008830.2 and Mouse NP\_570954.1). Recommended concentration: 0.03-0.1µg/ml.

### Species Reactivity

**Tested:** Mouse

**Expected from sequence similarity:** Human, Mouse, Rat, Dog, Pig, Cow



EB10997 (0.03 $\mu$ g/ml) staining of Mouse fetal Kidney lysate (35 $\mu$ g protein in RIPA buffer). Primary incubation was 1 hour. Detected by chemiluminescence.