



## UK Office

### Everest Biotech Ltd

Cherwell Innovation Centre  
77 Heyford Park  
Upper Heyford  
Oxfordshire  
OX25 5HD  
UK

Enquiries:

[info@everestbiotech.com](mailto:info@everestbiotech.com)

Sales:

[sales@everestbiotech.com](mailto:sales@everestbiotech.com)

Tech support:

[support@everestbiotech.com](mailto:support@everestbiotech.com)

Tel: +44 (0)1869 238326

Fax: +44 (0)1869 238327

## US Office

### Everest Biotech c/o Abcore

405 Maple Street, Suite A106  
Ramona,  
CA 92065  
USA

Inquiries:

[info@everestbiotech.com](mailto:info@everestbiotech.com)

Sales:

[usasales@everestbiotech.com](mailto:usasales@everestbiotech.com)

Tech support:

[support@everestbiotech.com](mailto:support@everestbiotech.com)

Tel: 888-320-4628 (toll-free)

Fax: 888-841-9041

[www.everestbiotech.com](http://www.everestbiotech.com)

**Research Use Only. Not for  
diagnostic or therapeutic use.**

## EB11000 - Goat Anti-IDH3G (aa337-350) Antibody

Size: 100µg specific antibody in 200µl



### Target Protein

**Principal Names:** IDH3G, isocitrate dehydrogenase 3 (NAD+) gamma, H-IDHG, IDH-gamma, NAD (H)-specific isocitrate dehydrogenase gamma subunit, NAD(+)-specific ICDH subunit gamma, NAD+-specific ICDH, OTTHUMP00000025984, OTTHUMP00000025987, OTTHUMP00000025988, isocitrate dehydrogenase [NAD] subunit gamma, mitochondrial, isocitrate dehydrogenase, NAD(+)-specific, mitochondrial, gamma subunit, isocitric dehydrogenase subunit gamma

**Official Symbol:** IDH3G

**Accession Number(s):** NP\_004126.1; NP\_777358.1

**Human GeneID(s):** [3421](#)

**Non-Human GeneID(s):** 15929 (mouse), 25179 (rat)

**Important Comments:** This antibody is expected to recognize both reported isoforms (NP\_004126.1; NP\_777358.1).

### Immunogen

Peptide with sequence C-DHLKLHSYATSIRK, from the internal region of the protein sequence according to NP\_004126.1; NP\_777358.1.

Please note the [peptide](#) is available for sale.

### Purification and Storage

Purified from goat serum by ammonium sulphate precipitation followed by antigen affinity chromatography using the immunizing peptide.

Supplied at 0.5 mg/ml in Tris saline, 0.02% sodium azide, pH7.3 with 0.5% bovine serum albumin.

Aliquot and store at -20°C. Minimize freezing and thawing.

### Applications Tested

**Peptide ELISA:** antibody detection limit dilution 1:16000.

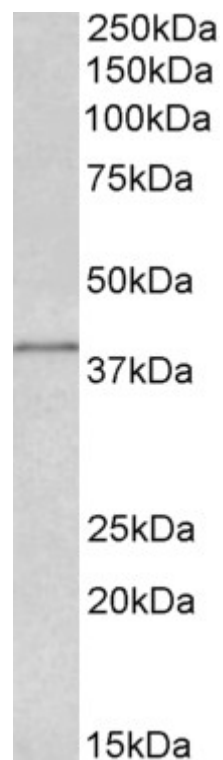
**Western blot:** Approx 38kDa band observed in lysates of cell line MCF7 and of Rat and Pig Heart (calculated MW of 41.5kDa according to NP\_777358.1). Recommended concentration: 0.5-2µg/ml.

**IHC:** Paraffin embedded Human Kidney. Recommended concentration: 5µg/ml.

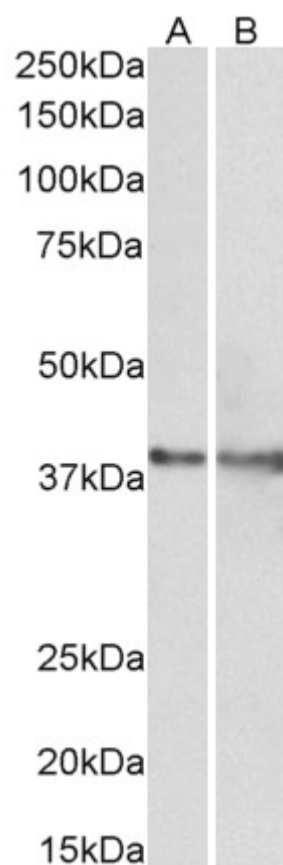
### Species Reactivity

**Tested:** Human, Rat, Pig

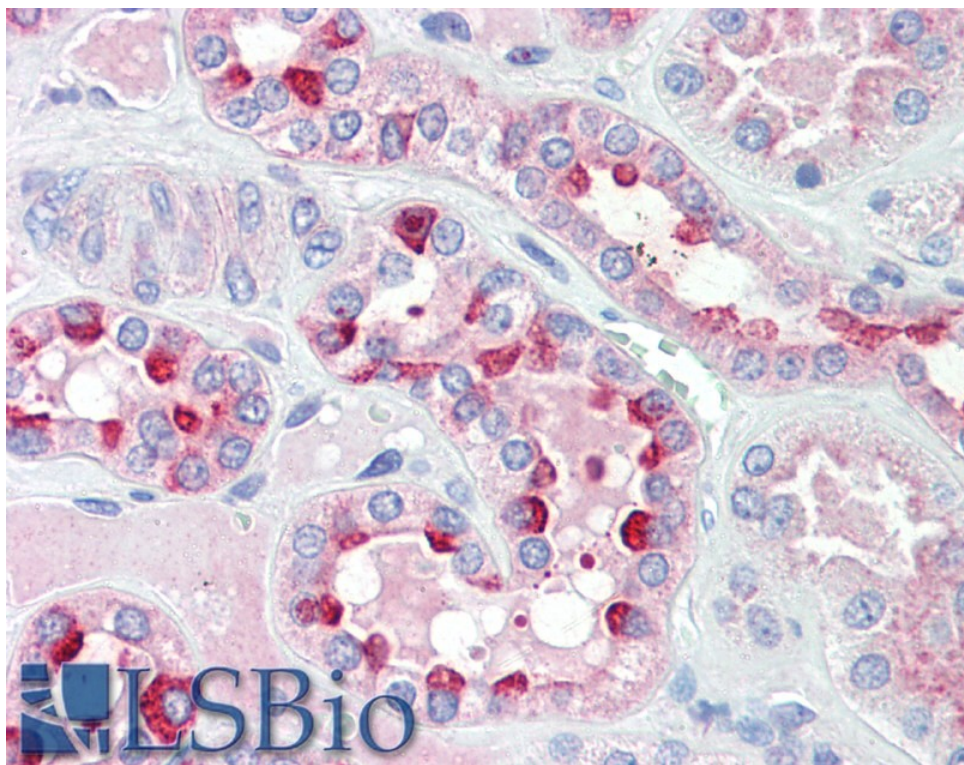
**Expected from sequence similarity:** Human, Mouse, Rat, Dog, Pig, Cow



EB11000 (0.5µg/ml) staining of MCF7 lysate (35µg protein in RIPA buffer). Primary incubation was 1 hour. Detected by chemiluminescence.



EB11000 (1µg/ml) staining of Rat (A) and Pig (B) Heart lysate (35µg protein in RIPA buffer). Primary incubation was 1 hour. Detected by chemiluminescence.



EB11000 (5µg/ml) staining of paraffin embedded Human Kidney. Steamed antigen retrieval with citrate buffer pH 6, AP-staining.