

## UK Office

### Everest Biotech Ltd

Cherwell Innovation Centre  
77 Heyford Park  
Upper Heyford  
Oxfordshire  
OX25 5HD  
UK

Enquiries:

[info@everestbiotech.com](mailto:info@everestbiotech.com)

Sales:

[sales@everestbiotech.com](mailto:sales@everestbiotech.com)

Tech support:

[support@everestbiotech.com](mailto:support@everestbiotech.com)

Tel: +44 (0)1869 238326

[www.everestbiotech.com](http://www.everestbiotech.com)

**Research Use Only. Not for  
diagnostic or therapeutic use.**

## EB07088 - Goat Anti-IFT88 / Polaris Antibody

Size: 100µg specific antibody in 200µl



### Target Protein

**Principal Names:** IFT88, polaris, TTC10, tetratricopeptide repeat domain 10, HGNC:20606, D13S1056E, DAF19, IFT88, MGC26259, RP11-172H24.2, TG737, hTg737, TPR repeat protein 10, Probe hTg737 (polycystic kidney disease, autosomal recessive), Tg737 protein, intraflagellar transport 88 homolog, recessive polycystic kidney disease protein Tg737 homolog, intraflagellar transport 88 homolog (Chlamydomonas)

**Official Symbol:** IFT88

**Accession Number(s):** NP\_783195.2; NP\_006522.2, NP\_001340507.1; NP\_001340498.1

**Human GeneID(s):** [8100](#)

**Non-Human GeneID(s):** 21821 (mouse), 305918 (rat)

**Important Comments:** This antibody is expected to recognise many reported isoforms.

### Immunogen

Peptide with sequence C-KKRIDEDDFADEE, from the C Terminus of the protein sequence according to NP\_783195.2; NP\_006522.2, NP\_001340507.1; NP\_001340498.1.

Please note the [peptide](#) is available for sale.

### Purification and Storage

Purified from goat serum by ammonium sulphate precipitation followed by antigen affinity chromatography using the immunizing peptide.

Supplied at 0.5 mg/ml in Tris saline, 0.02% sodium azide, pH7.3 with 0.5% bovine serum albumin.

Aliquot and store at -20°C. Minimize freezing and thawing.

### Applications Tested

**Peptide ELISA:** antibody detection limit dilution 1:8000.

**Western blot:** Approx. 80kDa band observed in lysates of cell lines THP-1, K562 and KNRK and 85kDa in lysates of cell line U251 (calculated MW of 94.3kDa according to Human NP\_783195.2) and 93.1kDa according to Rat XP\_006252128.1). These bands were successfully blocked by incubation with the immunizing peptide. Recommended concentration: 1-3µg/ml. Primary incubation 1 hour at room temperature.

A batch specific positive control lysate is available for this product. Please contact [Sales@everestbiotech.com](mailto:Sales@everestbiotech.com) for availability.

**Immunofluorescence:** Strong expression of the protein seen in the cytoplasm of A549 and HepG2 cells. Recommended concentration: 10µg/ml.

**Flow Cytometry:** Flow cytometric analysis of THP-1 cells. Recommended concentration: 10ug/ml.

### Species Reactivity

**Tested:** Human, Rat

**Expected from sequence similarity:** Human, Mouse, Rat, Dog

### Specific Reference

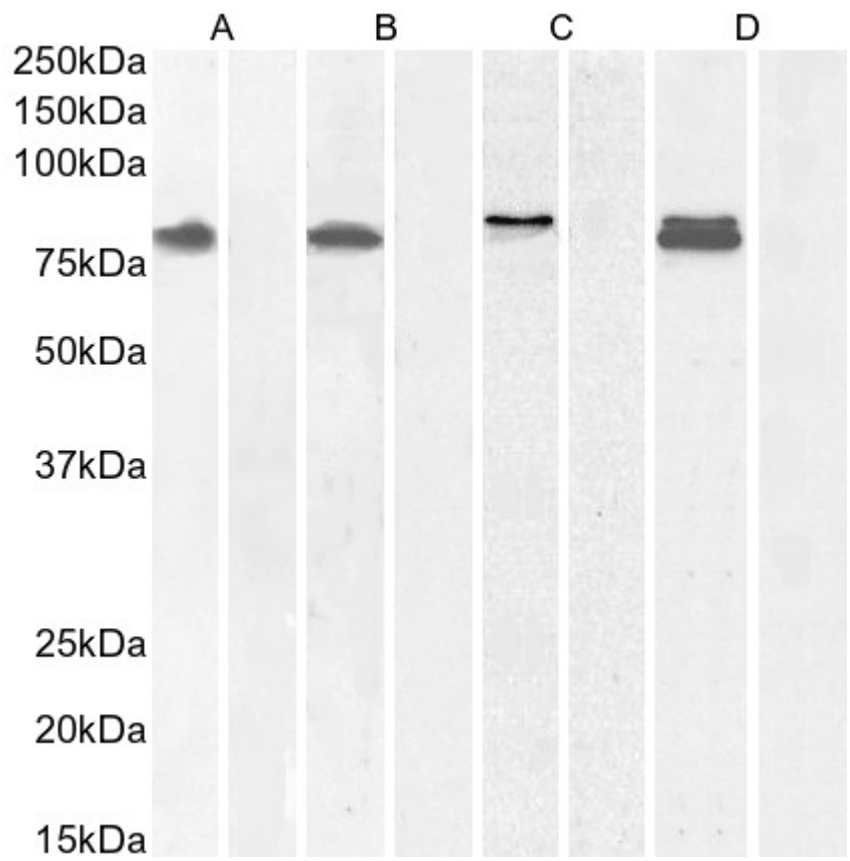
**This antibody (previous batch) has been successfully used in IF on Mouse:**

Miyoshi K, Kasahara K, Miyazaki I, Shimizu S, Taniguchi M, Matsuzaki S, Tohyama M, Asanuma M.

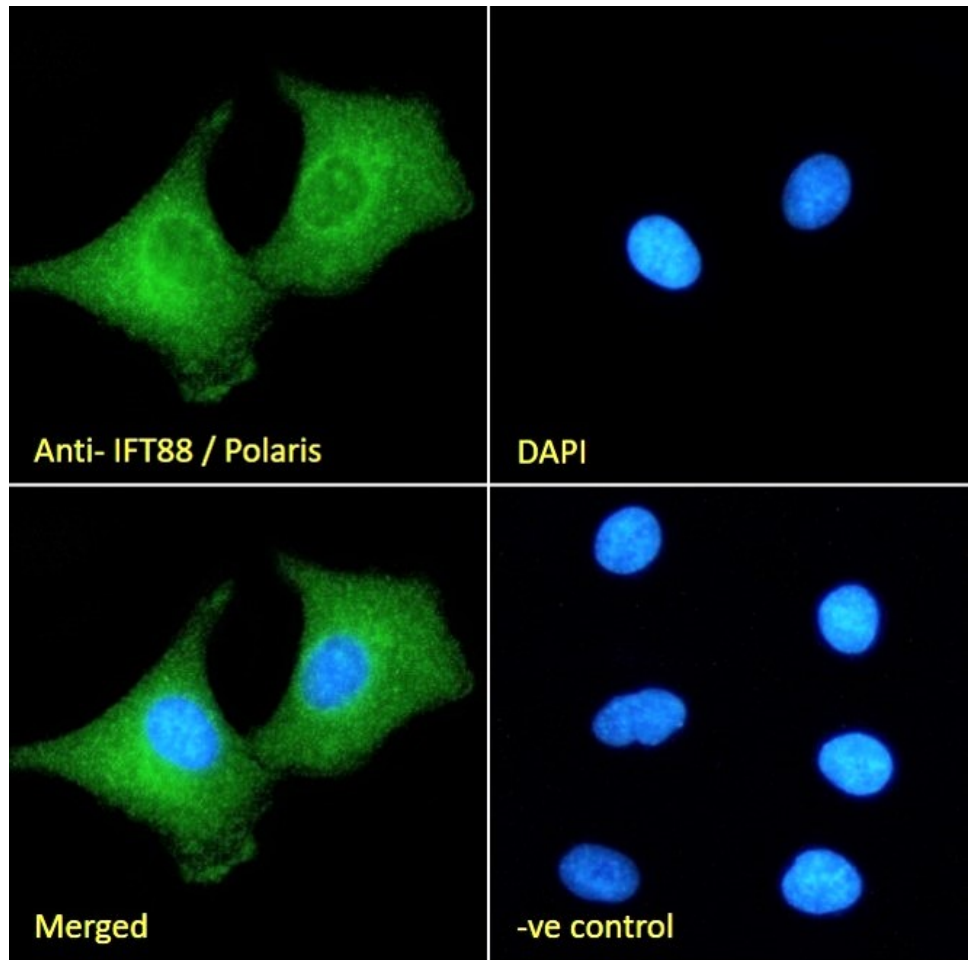
Pericentrin, a centrosomal protein related to microcephalic primordial dwarfism, is required for olfactory cilia assembly in mice.

FASEB J. 2009 Oct;23(10):3289-97.

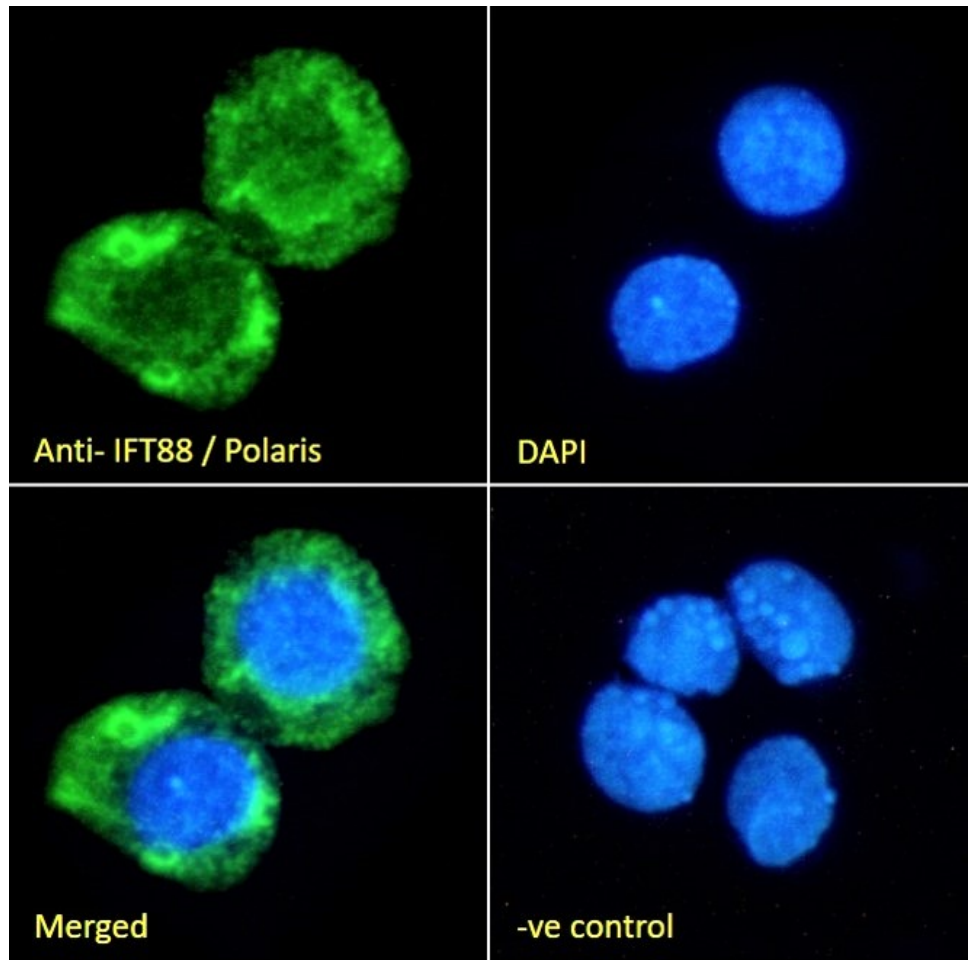
PMID: 19470799



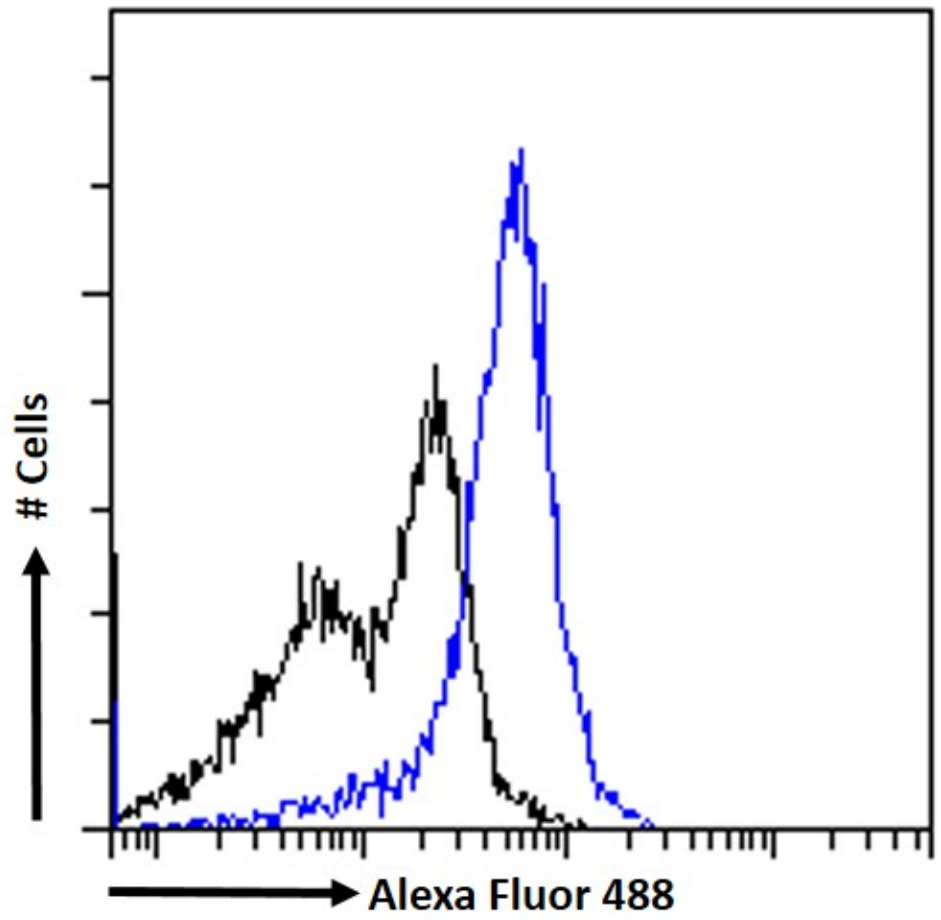
EB07088 (2 $\mu$ g/ml) staining of K562 (A), and (3 $\mu$ g/ml) THP-1 (B), U251 (C) and KNRK (D) cell lysate (35 $\mu$ g protein in RIPA buffer). Detected by chemiluminescence.



EB07088 Immunofluorescence analysis of paraformaldehyde fixed A549 cells, permeabilized with 0.15% Triton. Primary incubation 1hr (10ug/ml) followed by Alexa Fluor 488 secondary antibody (2ug/ml), showing cytoplasmic staining. The nuclear stain is DAPI (blue). Negative control: Unimmunized goat IgG (10ug/ml) followed by Alexa Fluor 488 secondary antibody (2ug/ml).



EB07088 Immunofluorescence analysis of paraformaldehyde fixed HepG2 cells, permeabilized with 0.15% Triton. Primary incubation 1hr (10ug/ml) followed by Alexa Fluor 488 secondary antibody (2ug/ml), showing cytoplasmic staining. The nuclear stain is DAPI (blue). Negative control: Unimmunized goat IgG (10ug/ml) followed by Alexa Fluor 488 secondary antibody (2ug/ml).



EB07088 Flow cytometric analysis of paraformaldehyde fixed THP-1 cells (blue line) permeabilized with 0.5% Triton. Primary incubation 1hr (10ug/ml) followed by Alexa Fluor 488® conjugated secondary antibody (1ug/ml). IgG control: Unimmunized goat IgG (black line) followed by Alexa Fluor 488 secondary antibody.