

UK Office

Everest Biotech Ltd

Cherwell Innovation Centre
77 Heyford Park
Upper Heyford
Oxfordshire
OX25 5HD
UK

Enquiries:

info@everestbiotech.com

Sales:

sales@everestbiotech.com

Tech support:

support@everestbiotech.com

Tel: +44 (0)1869 238326

www.everestbiotech.com

**Research Use Only. Not for
diagnostic or therapeutic use.**

EB11063 - Goat Anti-IGF2 (aa81-93) Antibody

Size: 100µg specific antibody in 200µl



Target Protein

Principal Names: C11orf43, FLJ22066, FLJ44734, IGF-II, insulin-like growth factor 2 (somatomedin A), insulin-like growth factor II, insulin-like growth factor type 2, OTTHUMP00000220677, PP9974, somatomedin-A, IGF2

Official Symbol: IGF2

Accession Number(s): NP_000603.1; NP_001121070.1

Human GeneID(s): [3481](#)

Non-Human GeneID(s): 16002 (mouse), 24483 (rat)

Important Comments: This antibody is expected to recognize both reported isoforms (NP_000603.1; NP_001121070.1). Reported variants represent identical protein: NP_000603.1, NP_001007140.2

Immunogen

Peptide with sequence ETYCATPAKSERD, from the internal region of the protein sequence according to NP_000603.1; NP_001121070.1.

Please note the [peptide](#) is available for sale.

Purification and Storage

Purified from goat serum by ammonium sulphate precipitation followed by antigen affinity chromatography using the immunizing peptide.

Supplied at 0.5 mg/ml in Tris saline, 0.02% sodium azide, pH7.3 with 0.5% bovine serum albumin.

Aliquot and store at -20°C. Minimize freezing and thawing.

Applications Tested

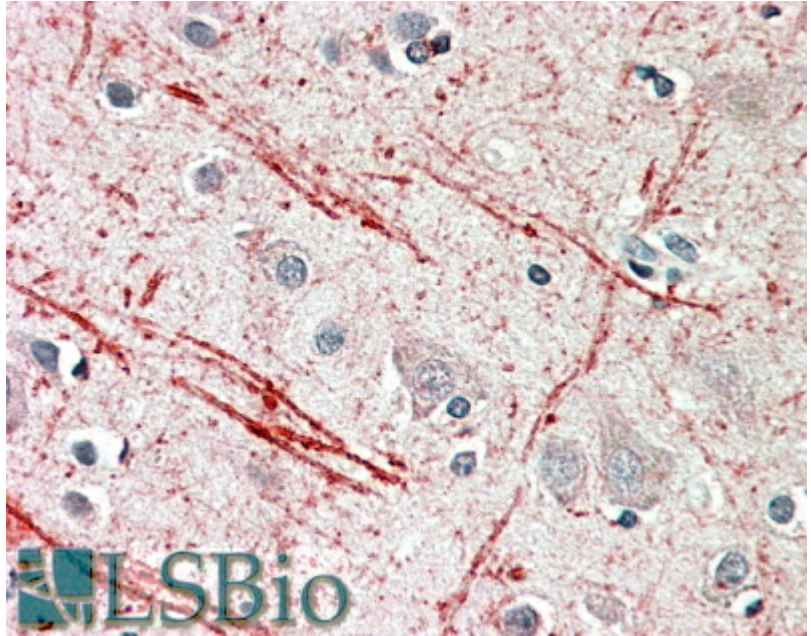
Peptide ELISA: antibody detection limit dilution 1:64000.

IHC: In paraffin embedded Human Cortex shows axonal staining. Recommended concentration: 5-10µg/ml.

Species Reactivity

Tested: Human

Expected from sequence similarity: Human, Mouse, Rat, Dog, Pig, Cow



EB11063 (5µg/ml) staining of paraffin embedded Human Cortex. Steamed antigen retrieval with citrate buffer pH 6, AP-staining.