



UK Office

Everest Biotech Ltd

Cherwell Innovation Centre
77 Heyford Park
Upper Heyford
Oxfordshire
OX25 5HD
UK

Enquiries:

info@everestbiotech.com

Sales:

sales@everestbiotech.com

Tech support:

support@everestbiotech.com

Tel: +44 (0)1869 238326

Fax: +44 (0)1869 238327

US Office

Everest Biotech c/o Abcore

405 Maple Street, Suite A106
Ramona,
CA 92065
USA

Inquiries:

info@everestbiotech.com

Sales:

usasales@everestbiotech.com

Tech support:

support@everestbiotech.com

Tel: 888-320-4628 (toll-free)

Fax: 888-841-9041

www.everestbiotech.com

**Research Use Only. Not for
diagnostic or therapeutic use.**

EB08513 - Goat Anti-IGFBP6 Antibody

Size: 100µg specific antibody in 200µl



Target Protein

Principal Names: IGFBP6, insulin-like growth factor binding protein 6, IBP6, IGF binding protein 6

Official Symbol: IGFBP6

Accession Number(s): NP_002169.1

Human GeneID(s): [3489](#)

Immunogen

Peptide with sequence C-RPQDVNRRDQQRNP, from the internal region of the protein sequence according to NP_002169.1.

Please note the [peptide](#) is available for sale.

Purification and Storage

Purified from goat serum by ammonium sulphate precipitation followed by antigen affinity chromatography using the immunizing peptide.

Supplied at 0.5 mg/ml in Tris saline, 0.02% sodium azide, pH7.3 with 0.5% bovine serum albumin.

Aliquot and store at -20°C. Minimize freezing and thawing.

Applications Tested

Peptide ELISA: antibody detection limit dilution 1:32000.

Western blot: Approx. 25kDa band observed in Human Adrenal Gland lysates (calculated MW of 25.3kDa according to NP_002169.1). In transfected HEK293 transiently expressing IGFBP6 a band of approx. 29kDa is observed. This band is not observed in the non-transfected HEK293. Recommended concentration: 0.5-1.5µg/ml.

IHC: Paraffin embedded Human Skeletal Muscle. Recommended concentration: 5µg/ml.

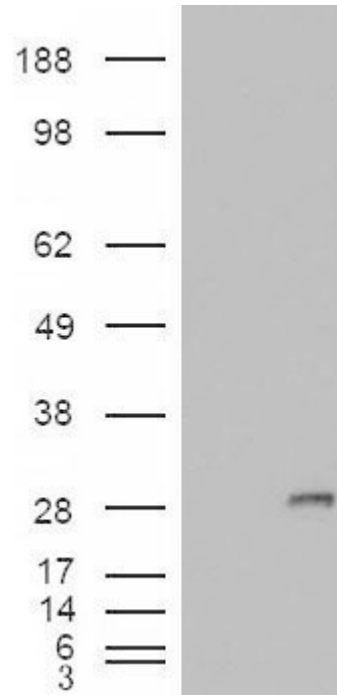
Species Reactivity

Tested: Human

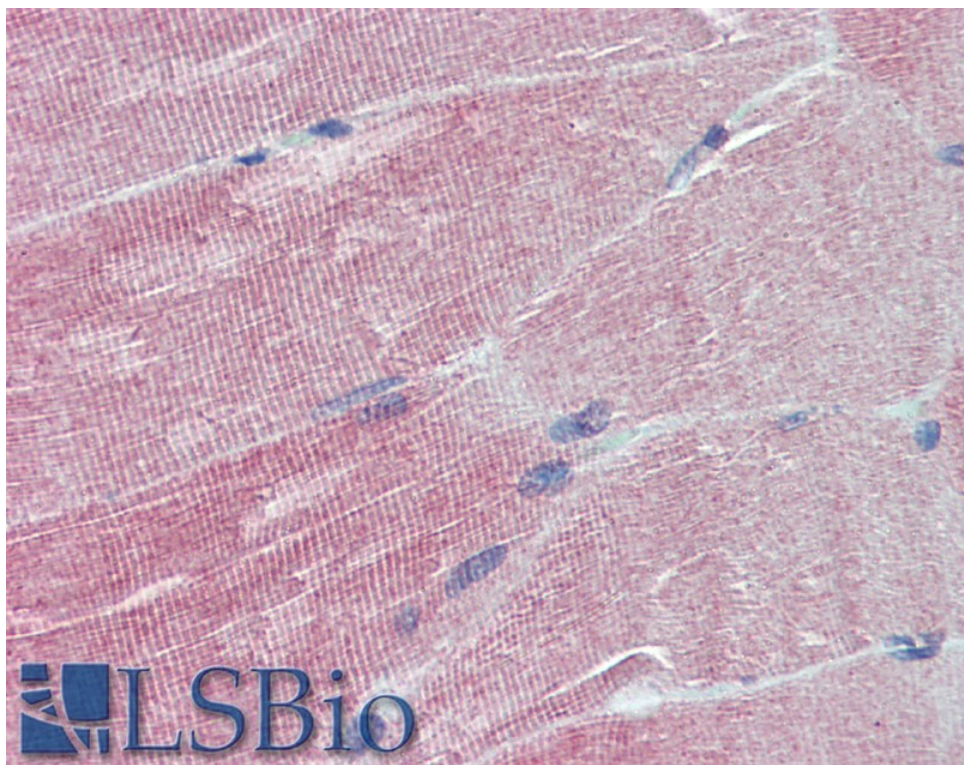
Expected from sequence similarity: Human, Cow



EB08513 (0.5µg/ml) staining of Human Adrenal Gland lysate (35µg protein in RIPA buffer). Primary incubation was 1 hour. Detected by chemiluminescence.



HEK293 overexpressing IGFBP6 (RC204060) and probed with EB08513 (mock transfection in first lane), tested by Origene.



EB08513 (5µg/ml) staining of paraffin embedded Human Skeletal Muscle. Steamed antigen retrieval with citrate buffer pH 6, AP-staining.