

## UK Office

### Everest Biotech Ltd

Cherwell Innovation Centre  
77 Heyford Park  
Upper Heyford  
Oxfordshire  
OX25 5HD  
UK

Enquiries:

[info@everestbiotech.com](mailto:info@everestbiotech.com)

Sales:

[sales@everestbiotech.com](mailto:sales@everestbiotech.com)

Tech support:

[support@everestbiotech.com](mailto:support@everestbiotech.com)

Tel: +44 (0)1869 238326

[www.everestbiotech.com](http://www.everestbiotech.com)

**Research Use Only. Not for  
diagnostic or therapeutic use.**

## EB09317 - Goat Anti-IGFBP7 (aa145-159) Antibody

Size: 100µg specific antibody in 200µl



### Target Protein

**Principal Names:** IGFBP7, insulin-like growth factor binding protein 7, FSTL2, IGFBP-7, IGFBP-7v, IGFBPRP1, MAC25, PSF

**Official Symbol:** IGFBP7

**Accession Number(s):** NP\_001544.1

**Human GeneID(s):** [3490](#)

### Immunogen

Peptide with sequence EKAITQVSKGTCEQG, from the internal region of the protein sequence according to NP\_001544.1.

Please note the [peptide](#) is available for sale.

### Purification and Storage

Purified from goat serum by ammonium sulphate precipitation followed by antigen affinity chromatography using the immunizing peptide.

Supplied at 0.5 mg/ml in Tris saline, 0.02% sodium azide, pH7.3 with 0.5% bovine serum albumin.

Aliquot and store at -20°C. Minimize freezing and thawing.

### Applications Tested

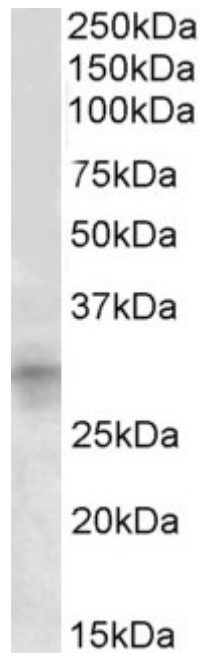
**Peptide ELISA:** antibody detection limit dilution 1:8000.

**Western blot:** Approx 30kDa band observed in Mouse Kidney lysates (calculated MW of 29.1kDa according to Human NP\_001544.1 and to Mouse NP\_032074.3). Recommended concentration: 1-3µg/ml. Primary incubation was 1 hour. Preliminary testing was unsuccessful on Rat and Human Heart, and Human Placenta for this particular batch.

### Species Reactivity

**Tested:** Mouse

**Expected from sequence similarity:** Human, Mouse, Rat



EB09317 (1 $\mu$ g/ml) staining of Mouse Kidney lysate (35 $\mu$ g protein in RIPA buffer). Detected by chemiluminescence.