



## UK Office

### Everest Biotech Ltd

Cherwell Innovation Centre  
77 Heyford Park  
Upper Heyford  
Oxfordshire  
OX25 5HD  
UK

Enquiries:

[info@everestbiotech.com](mailto:info@everestbiotech.com)

Sales:

[sales@everestbiotech.com](mailto:sales@everestbiotech.com)

Tech support:

[support@everestbiotech.com](mailto:support@everestbiotech.com)

Tel: +44 (0)1869 238326

[www.everestbiotech.com](http://www.everestbiotech.com)

**Research Use Only. Not for  
diagnostic or therapeutic use.**

## EB12342 - Goat Anti-IL-1 beta Antibody

Size: 100µg specific antibody in 200µl



### Target Protein

**Principal Names:** IL1B, interleukin 1, beta, IL-1, IL1-BETA, IL1F2, IL-1 beta, catabolin, interleukin-1 beta, preinterleukin 1 beta, pro-interleukin-1-beta

**Official Symbol:** IL1B

**Accession Number(s):** NP\_000567.1

**Human GeneID(s):** [3553](#)

### Immunogen

Peptide with sequence C-QLESVDPKNYPKK, from the internal region of the protein sequence according to NP\_000567.1.

Please note the [peptide](#) is available for sale.

### Purification and Storage

Purified from goat serum by ammonium sulphate precipitation followed by antigen affinity chromatography using the immunizing peptide.

Supplied at 0.5 mg/ml in Tris saline, 0.02% sodium azide, pH7.3 with 0.5% bovine serum albumin.

Aliquot and store at -20°C. Minimize freezing and thawing.

### Applications Tested

**Peptide ELISA:** antibody detection limit dilution 1:128000.

**Western blot:** Approx. 28kDa band observed in Human Peripheral Blood

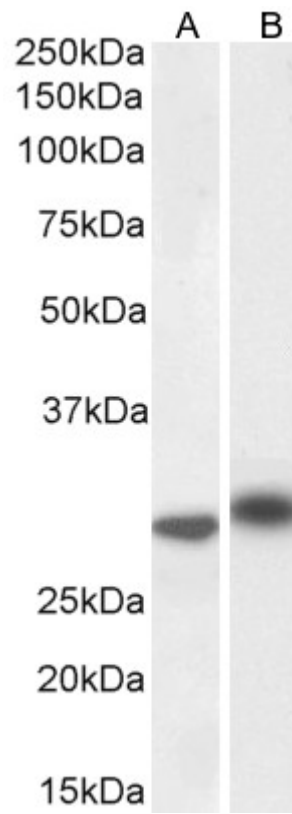
Mononucleocyte (PBM) lysates and approx. 30kDa in Human Bone Marrow lysates

(calculated MW of 30.7kDa according to NP\_000567.1). Recommended concentration: 1-3µg/ml. Primary incubation 1 hour at room temperature.

### Species Reactivity

**Tested:** Human

**Expected from sequence similarity:** Human



EB12342 (1 $\mu$ g/ml) staining of Human PBM (A) and Bone Marrow (B) lysate (35 $\mu$ g protein in RIPA buffer).  
Detected by chemiluminescence.