



International Office

Everest Biotech Ltd

Vector Laboratories, Inc.
6737 Mowry Ave
Newark, CA 94560
United States

Customer Service:

customerservice@vectorlabs.com

Technical Service:

technical@vectorlabs.com

Tel: +1 (800) 227-6666

www.everestbiotech.com

**Research Use Only. Not for
diagnostic or therapeutic use.**

EB12088 - Goat Anti-IL-17B (aa77-89) Antibody

Size: 100µg specific antibody in 200µl



Target Protein

Principal Names: IL17B, interleukin 17B, IL-17B, IL-20, NIRF, ZCYTO7, cytokine Zcyto7, cytokine-like protein ZCYTO7, interleukin 20, interleukin-17 beta, interleukin-17B, interleukin-20, neuronal interleukin-17 related factor, neuronal interleukin-17-related factor

Official Symbol: IL17B

Accession Number(s): NP_055258.1

Human GeneID(s): [27190](#)

Immunogen

Peptide with sequence SELAQRKCEVNLQ, from the internal region of the protein sequence according to NP_055258.1.

Please note the [peptide](#) is available for sale.

Purification and Storage

Purified from goat serum by ammonium sulphate precipitation followed by antigen affinity chromatography using the immunizing peptide.

Supplied at 0.5 mg/ml in Tris saline, 0.02% sodium azide, pH7.3 with 0.5% bovine serum albumin.

Aliquot and store at -20°C. Minimize freezing and thawing.

Applications Tested

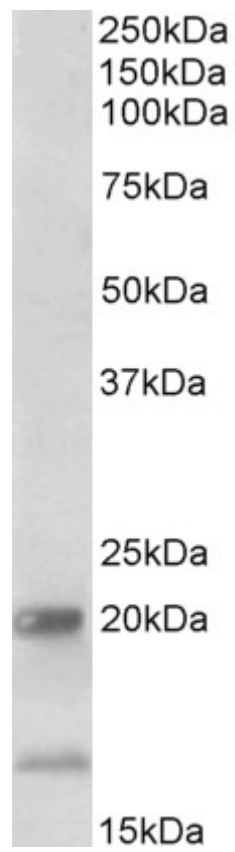
Peptide ELISA: antibody detection limit dilution 1:128000.

Western blot: Approx 20kDa band observed in Human Ileum lysates (calculated MW of 20.4kDa according to NP_055258.1). Recommended concentration: 1-3µg/ml. An additional band of unknown identity was also consistently observed at 17kDa. This band was successfully blocked by incubation with the immunizing peptide. We would appreciate any feedback from people in the field - have any such results been reported with other antibodies/lysates? Have any further splice variants/modified forms been reported?

Species Reactivity

Tested: Human

Expected from sequence similarity: Human



EB12088 (2µg/ml) staining of Human Ileum lysate (35µg protein in RIPA buffer). Primary incubation was 1 hour.
Detected by chemiluminescence.