



UK Office

Everest Biotech Ltd

Cherwell Innovation Centre
77 Heyford Park
Upper Heyford
Oxfordshire
OX25 5HD
UK

Enquiries:

info@everestbiotech.com

Sales:

sales@everestbiotech.com

Tech support:

support@everestbiotech.com

Tel: +44 (0)1869 238326

www.everestbiotech.com

**Research Use Only. Not for
diagnostic or therapeutic use.**

EB09028 - Goat Anti-IL12A Antibody

Size: 100µg specific antibody in 200µl



Target Protein

Principal Names: IL12A, interleukin 12A (natural killer cell stimulatory factor 1, cytotoxic lymphocyte maturation factor 1, p35), CLMF, IL-12A, NFSK, NKSF1, P35, IL-12, subunit p35, NF cell stimulatory factor chain 1, cytotoxic lymphocyte maturation factor 1, p35, interleukin 12, p35, interleukin 12A, interleukin-12 alpha chain, natural killer cell stimulatory factor 1, 35 kD subunit

Official Symbol: IL12A

Accession Number(s): NP_000873.2

Human GeneID(s): [3592](#)

Immunogen

Peptide with sequence PCTSEEIDHEDITK, from the internal region of the protein sequence according to NP_000873.2.

Please note the [peptide](#) is available for sale.

Purification and Storage

Purified from goat serum by ammonium sulphate precipitation followed by antigen affinity chromatography using the immunizing peptide.

Supplied at 0.5 mg/ml in Tris saline, 0.02% sodium azide, pH7.3 with 0.5% bovine serum albumin.

Aliquot and store at -20°C. Minimize freezing and thawing.

Applications Tested

Peptide ELISA: antibody detection limit dilution 1:16000.

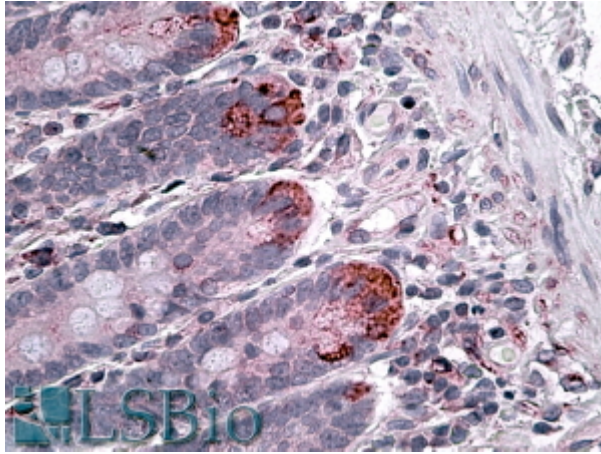
IHC: In paraffin embedded Small Intestine shows granular staining of paneth cells.

Recommended concentration: 4-6µg/ml.

Species Reactivity

Tested: Human

Expected from sequence similarity: Human, Dog, Pig



EB09028 (3.8µg/ml) staining of paraffin embedded Human Small Intestine. Steamed antigen retrieval with citrate buffer pH 6, AP-staining.