



## International Office

### Everest Biotech Ltd

Vector Laboratories, Inc.  
6737 Mowry Ave  
Newark, CA 94560  
United States

Customer Service:

[customerservice@vectorlabs.com](mailto:customerservice@vectorlabs.com)

Technical Service:

[technical@vectorlabs.com](mailto:technical@vectorlabs.com)

Tel: +1 (800) 227-6666

[www.everestbiotech.com](http://www.everestbiotech.com)

**Research Use Only. Not for  
diagnostic or therapeutic use.**

## EB07862 - Goat Anti-IL12B / IL12p40 Antibody

Size: 100µg specific antibody in 200µl



### Target Protein

**Principal Names:** IL12B, interleukin 12B (natural killer cell stimulatory factor 2, cytotoxic lymphocyte maturation factor 2, p40), CLMF, CLMF2, IL-12B, NKSF, NKSF2, IL12, subunit p40, cytotoxic lymphocyte maturation factor 2, p40, interleukin 12, p40, interleukin 12B, interleukin-12 beta chain, natural killer cell stimulatory factor, 40 kD subunit, natural killer cell stimulatory factor-2

**Official Symbol:** IL12B

**Accession Number(s):** NP\_002178.2

**Human GeneID(s):** [3593](#)

### Immunogen

Peptide with sequence C-QGKSKREKKDRVFTD, from the internal region of the protein sequence according to NP\_002178.2.

Please note the [peptide](#) is available for sale.

### Purification and Storage

Purified from goat serum by ammonium sulphate precipitation followed by antigen affinity chromatography using the immunizing peptide.

Supplied at 0.5 mg/ml in Tris saline, 0.02% sodium azide, pH7.3 with 0.5% bovine serum albumin.

Aliquot and store at -20°C. Minimize freezing and thawing.

### Applications Tested

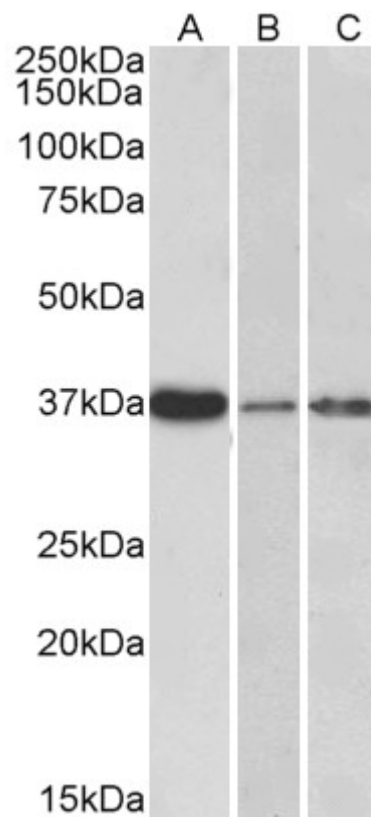
**Peptide ELISA:** antibody detection limit dilution 1:128000.

**Western blot:** Approx 37kDa band observed in Human Liver, Skin and Tonsil lysates (calculated MW of 37.2kDa according to NP\_002178.2). Recommended concentration: 0.3-1µg/ml. Primary incubation was 1 hour.

### Species Reactivity

**Tested:** Human

**Expected from sequence similarity:** Human



EB07862 (0.3 $\mu$ g/ml) staining of Human Liver (A), Skin (B) and Tonsil (C) lysate (35 $\mu$ g protein in RIPA buffer).  
Detected by chemiluminescence.