



UK Office

Everest Biotech Ltd

Cherwell Innovation Centre
77 Heyford Park
Upper Heyford
Oxfordshire
OX25 5HD
UK

Enquiries:

info@everestbiotech.com

Sales:

sales@everestbiotech.com

Tech support:

support@everestbiotech.com

Tel: +44 (0)1869 238326

www.everestbiotech.com

**Research Use Only. Not for
diagnostic or therapeutic use.**

EB10083 - Goat Anti-IL12RB1 Antibody

Size: 100µg specific antibody in 200µl



Target Protein

Principal Names: CD212, IL-12 receptor beta component, IL12RB, IL-12R-BETA1, interleukin 12 receptor, beta 1, interleukin-12 receptor beta-1 chain, MGC34454, IL12RB1

Official Symbol: IL12RB1

Accession Number(s): NP_005526.1

Human GeneID(s): [3594](#)

Important Comments: This antibody is expected to recognize isoform 1 (NP_005526.1) only.

Immunogen

Peptide with sequence C-HVSVKNHSLDSVS, from the internal region of the protein sequence according to NP_005526.1.

Please note the [peptide](#) is available for sale.

Purification and Storage

Purified from goat serum by ammonium sulphate precipitation followed by antigen affinity chromatography using the immunizing peptide.

Supplied at 0.5 mg/ml in Tris saline, 0.02% sodium azide, pH7.3 with 0.5% bovine serum albumin.

Aliquot and store at -20°C. Minimize freezing and thawing.

Applications Tested

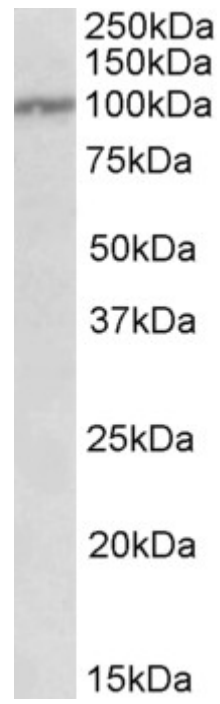
Peptide ELISA: antibody detection limit dilution 1:8000.

Western blot: Approx 100kDa band observed in Human Peripheral Blood Mononucleocytes lysates (calculated MW of 73.1kDa according to NP_005526.1). The observed molecular weight corresponds to the glycosylated form. Recommended concentration: 0.3-1µg/ml.

Species Reactivity

Tested: Human

Expected from sequence similarity: Human



EB10083 (0.3 μ g/ml) staining of Peripheral Blood Lymphocytes lysate (35 μ g protein in RIPA buffer). Primary incubation was 1 hour. Detected by chemiluminescence.