



International Office

Everest Biotech Ltd

Vector Laboratories, Inc.
6737 Mowry Ave
Newark, CA 94560
United States

Customer Service:

customerservice@vectorlabs.com

Technical Service:

technical@vectorlabs.com

Tel: +1 (800) 227-6666

www.everestbiotech.com

**Research Use Only. Not for
diagnostic or therapeutic use.**

EB12843 - Goat Anti-IL13RA2 (aa96-107) Antibody

Size: 100µg specific antibody in 200µl



Target Protein

Principal Names: IL13RA2, interleukin 13 receptor, alpha 2, CD213A2, CT19, IL-13R, IL13BP, IL-13 receptor subunit alpha-2, IL-13R subunit alpha-2, IL-13R-alpha-2, IL-13RA2, cancer/testis antigen 19, interleukin 13 binding protein, interleukin 13 receptor alpha 2 chain, in

Official Symbol: IL13RA2

Accession Number(s): NP_000631.1

Human GeneID(s): [3598](#)

Immunogen

Peptide with sequence C-DLNKGIEAKIHT, from the internal region of the protein sequence according to NP_000631.1.

Please note the [peptide](#) is available for sale.

Purification and Storage

Purified from goat serum by ammonium sulphate precipitation followed by antigen affinity chromatography using the immunizing peptide.

Supplied at 0.5 mg/ml in Tris saline, 0.02% sodium azide, pH7.3 with 0.5% bovine serum albumin.

Aliquot and store at -20°C. Minimize freezing and thawing.

Applications Tested

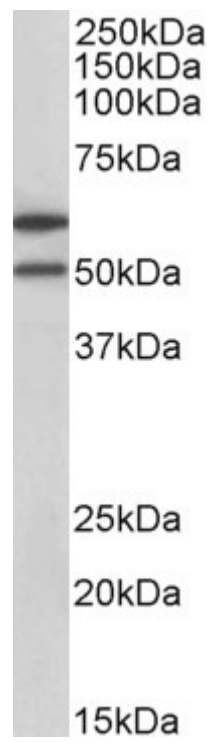
Peptide ELISA: antibody detection limit dilution 1:128000.

Western blot: Approx 50+60kDa bands observed in lysates of cell line HeLa (calculated MW of 44.2kDa according to NP_000631.1). The observed molecular weight corresponds to earlier findings in literature with different antibodies (Kioi et al, FASEB J. 2006 Nov;20(13):2378-80. PMID: 17023392). Recommended concentration: 1-3µg/ml.

Species Reactivity

Tested: Human

Expected from sequence similarity: Human



EB12843 (1µg/ml) staining of HeLa lysate (35µg protein in RIPA buffer). Primary incubation was 1 hour.
Detected by chemiluminescence.