



International Office

Everest Biotech Ltd

Vector Laboratories, Inc.
6737 Mowry Ave
Newark, CA 94560
United States

Customer Service:

customerservice@vectorlabs.com

Technical Service:

technical@vectorlabs.com

Tel: +1 (800) 227-6666

www.everestbiotech.com

**Research Use Only. Not for
diagnostic or therapeutic use.**

EB10107 - Goat Anti-IL1R2 Antibody

Size: 100µg specific antibody in 200µl



Target Protein

Principal Names: antigen CDw121b, CD121b, IL1RB, interleukin 1 receptor, type II, MGC47725, type II interleukin-1 receptor, beta, IL1R2

Official Symbol: IL1R2

Accession Number(s): NP_004624.1; NP_001248348.1

Human GeneID(s): [7850](#)

Important Comments: This antibody is expected to cross-react with both reported isoforms (NP_004624.1; NP_001248348.1). Reported variants represent identical protein: NP_775465.1, NP_004624.1

Immunogen

Peptide with sequence C-QYNITRSIELRIKK, from the internal region of the protein sequence according to NP_004624.1; NP_001248348.1.

Please note the [peptide](#) is available for sale.

Purification and Storage

Purified from goat serum by ammonium sulphate precipitation followed by antigen affinity chromatography using the immunizing peptide.

Supplied at 0.5 mg/ml in Tris saline, 0.02% sodium azide, pH7.3 with 0.5% bovine serum albumin.

Aliquot and store at -20°C. Minimize freezing and thawing.

Applications Tested

Peptide ELISA: antibody detection limit dilution 1:16000.

Western blot: Approx 45kDa band observed in lysates of cell lines LNCaP and MOLT-4 (calculated MW o 45.4kDa according to NP_004624.1). Recommended concentration: 0.3-1µg/ml. Primary incubation 1 hour at room temperature.

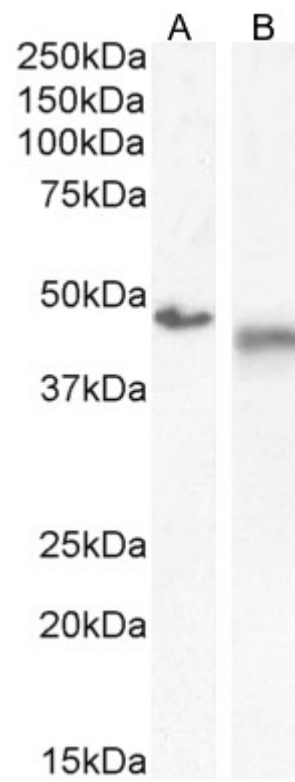
Immunofluorescence: Strong expression of the protein seen in the membranes and cytoplasm of A549 cells. Recommended concentration: 10µg/ml.

Flow Cytometry: Flow cytometric analysis of A549 cells. Recommended concentration: 10ug/ml.

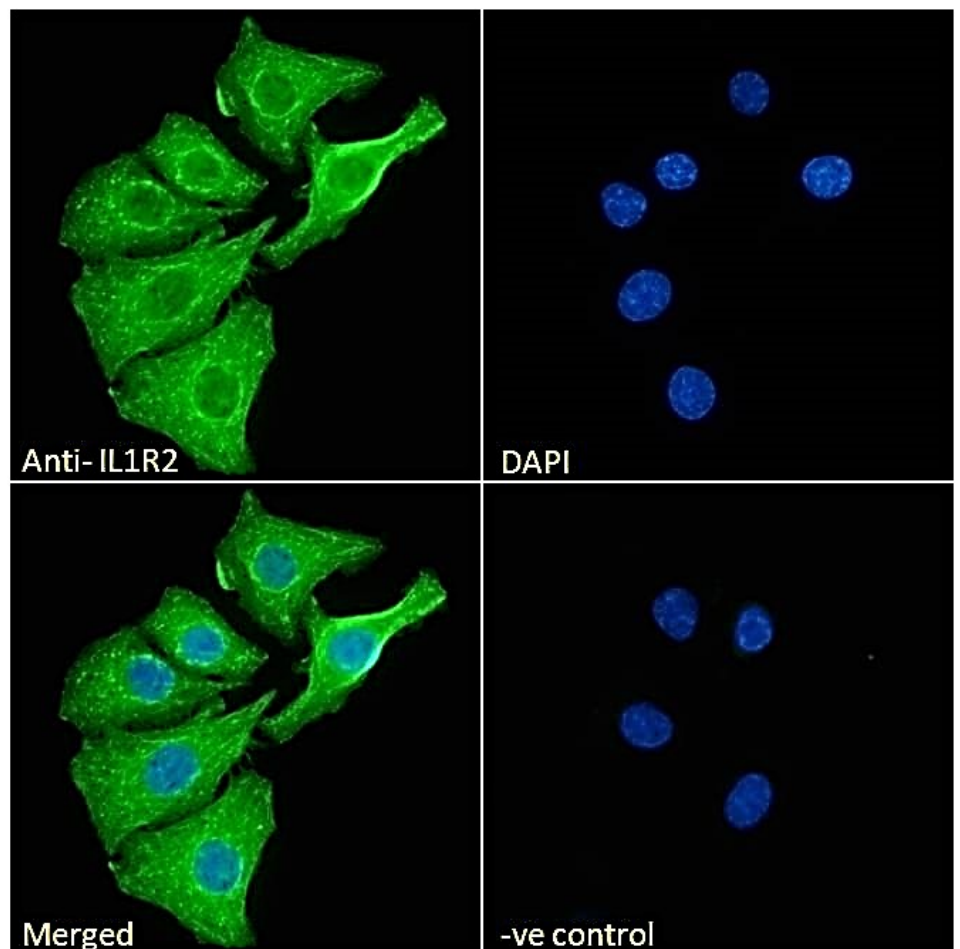
Species Reactivity

Tested: Human

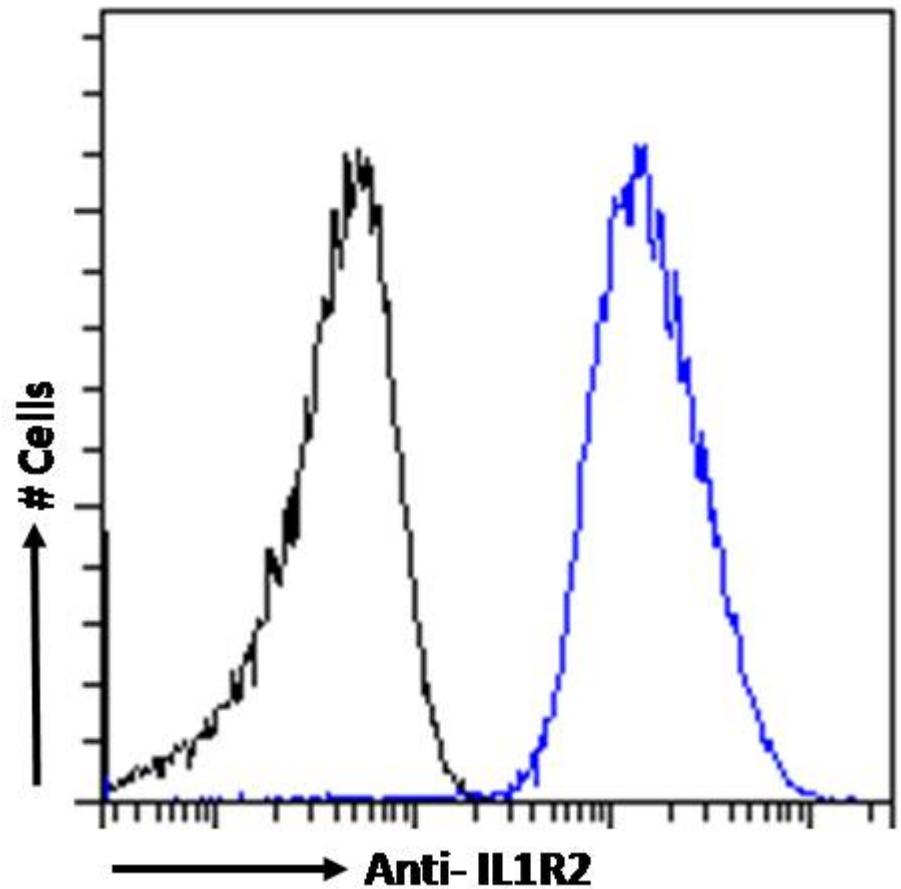
Expected from sequence similarity: Human



EB10107 (0.5µg/ml) staining of LNCaP (A) and (1µg/ml) MOLT-4 (B) cell- lysate (35µg protein in RIPA buffer).
Detected by chemiluminescence.



EB10107 Immunofluorescence analysis of paraformaldehyde fixed A549 cells, permeabilized with 0.15% Triton. Primary incubation 1hr (10ug/ml) followed by Alexa Fluor 488 secondary antibody (2ug/ml), showing membrane and cytoplasmic staining. The nuclear stain is DAPI (blue). Negative control: Unimmunized goat IgG (10ug/ml) followed by Alexa Fluor 488 secondary antibody (2ug/ml).



EB10107 Flow cytometric analysis of paraformaldehyde fixed A549 cells (blue line), permeabilized with 0.5% Triton. Primary incubation 1hr (10ug/ml) followed by Alexa Fluor 488 secondary antibody (1ug/ml). IgG control: Unimmunized goat IgG (black line) followed by Alexa Fluor 488 secondary antibody.