

## UK Office

### Everest Biotech Ltd

Cherwell Innovation Centre  
77 Heyford Park  
Upper Heyford  
Oxfordshire  
OX25 5HD  
UK

Enquiries:

[info@everestbiotech.com](mailto:info@everestbiotech.com)

Sales:

[sales@everestbiotech.com](mailto:sales@everestbiotech.com)

Tech support:

[support@everestbiotech.com](mailto:support@everestbiotech.com)

Tel: +44 (0)1869 238326

[www.everestbiotech.com](http://www.everestbiotech.com)

**Research Use Only. Not for  
diagnostic or therapeutic use.**

## EB12522 - Goat Anti-IL3RA / CD123 Antibody

Size: 100µg specific antibody in 200µl



### Target Protein

**Principal Names:** IL3RA, interleukin 3 receptor, alpha (low affinity), CD123, IL3R, IL3RAY, IL3RX, IL3RY, hIL-3Ra, CD123 antigen, IL-3 receptor alpha SP2 isoform, IL-3 receptor subunit alpha, IL-3R subunit alpha, IL-3R-alpha, IL-3RA, interleukin-3 receptor subunit alpha

**Official Symbol:** IL3RA

**Accession Number(s):** NP\_002174.1; NP\_001254642.1

**Human GeneID(s):** [3563](#)

**Important Comments:** This antibody is expected to recognize both reported isoforms (NP\_002174.1; NP\_001254642.1).

### Immunogen

Peptide with sequence RQQYECLHYKTD, from the internal region of the protein sequence according to NP\_002174.1; NP\_001254642.1.

Please note the [peptide](#) is available for sale.

### Purification and Storage

Purified from goat serum by ammonium sulphate precipitation followed by antigen affinity chromatography using the immunizing peptide.

Supplied at 0.5 mg/ml in Tris saline, 0.02% sodium azide, pH7.3 with 0.5% bovine serum albumin.

Aliquot and store at -20°C. Minimize freezing and thawing.

### Applications Tested

**Peptide ELISA:** antibody detection limit dilution 1:128000.

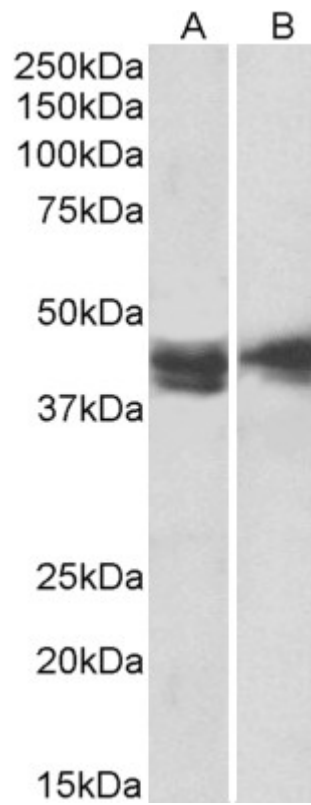
**Western blot:** Approx 43kDa band observed in lysates of cell lines Jurkat and Molt4 (calculated MW of 43.3kDa according to NP\_002174.1). Recommended concentration: 1-3µg/ml. Primary incubation was 1 hour.

**IHC:** Paraffin embedded Human Colon. Recommended concentration: 5µg/ml.

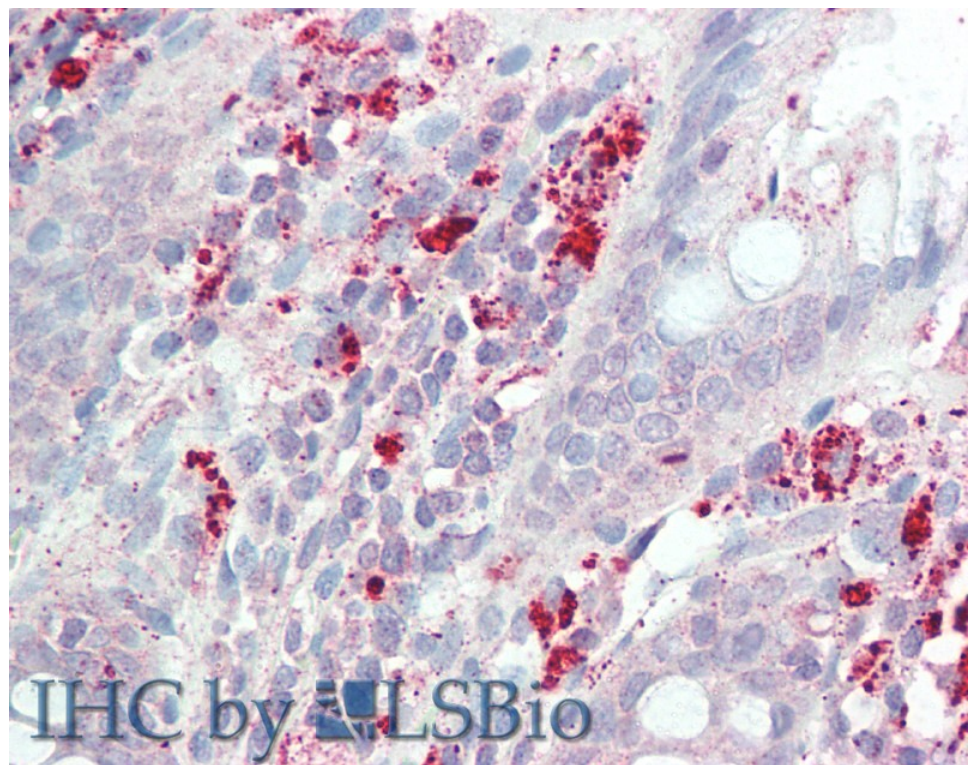
### Species Reactivity

**Tested:** Human

**Expected from sequence similarity:** Human



EB12522 (2 $\mu$ g/ml) staining of Jurkat (A) and Molt4 (B) lysates (35 $\mu$ g protein in RIPA buffer). Detected by chemiluminescence.



EB12522 (5 $\mu$ g/ml) staining of paraffin embedded Human Colon. Steamed antigen retrieval with citrate buffer pH 6, AP-staining.