



UK Office

Everest Biotech Ltd

Cherwell Innovation Centre
77 Heyford Park
Upper Heyford
Oxfordshire
OX25 5HD
UK

Enquiries:

info@everestbiotech.com

Sales:

sales@everestbiotech.com

Tech support:

support@everestbiotech.com

Tel: +44 (0)1869 238326

Fax: +44 (0)1869 238327

US Office

Everest Biotech c/o Abcore

405 Maple Street, Suite A106
Ramona,
CA 92065
USA

Inquiries:

info@everestbiotech.com

Sales:

usasales@everestbiotech.com

Tech support:

support@everestbiotech.com

Tel: 888-320-4628 (toll-free)

Fax: 888-841-9041

www.everestbiotech.com

**Research Use Only. Not for
diagnostic or therapeutic use.**

EB05120 - Goat Anti-ILK Antibody

Size: 100µg specific antibody in 200µl



Target Protein

Principal Names: ILK, integrin-linked kinase, P59, DKFZp686F1765, ILK-2, 59 kDa serine/threonine-protein kinase, ILK-1, integrin-linked kinase-2, integrin-linked protein kinase, p59ILK

Official Symbol: ILK

Accession Number(s): NP_004508.1; NP_001014794.1; NP_001014795.1

Human GeneID(s): [3611](#)

Important Comments: All 3 variants (represented by NP_004508.1; NP_001014794.1 and NP_001014795.1) encode the same protein.

Immunogen

Peptide with sequence C-DMIVPILEKMQDK, from the C Terminus of the protein sequence according to NP_004508.1; NP_001014794.1; NP_001014795.1.

Please note the [peptide](#) is available for sale.

Purification and Storage

Purified from goat serum by ammonium sulphate precipitation followed by antigen affinity chromatography using the immunizing peptide.

Supplied at 0.5 mg/ml in Tris saline, 0.02% sodium azide, pH7.3 with 0.5% bovine serum albumin.

Aliquot and store at -20°C. Minimize freezing and thawing.

Applications Tested

Peptide ELISA: antibody detection limit dilution 1:32000.

Western blot: Approx 52kDa band observed in Mouse Kidney lysates and in lysates of cell line NIH3T3 and 50-51kDa in HEK293, A431, HeLa and Jurkat lysates (calculated MW of 51.4kDa according to Human NP_004508.1 and Mouse NP_034692.2).

Recommended concentration: 0.5-2µg/ml.

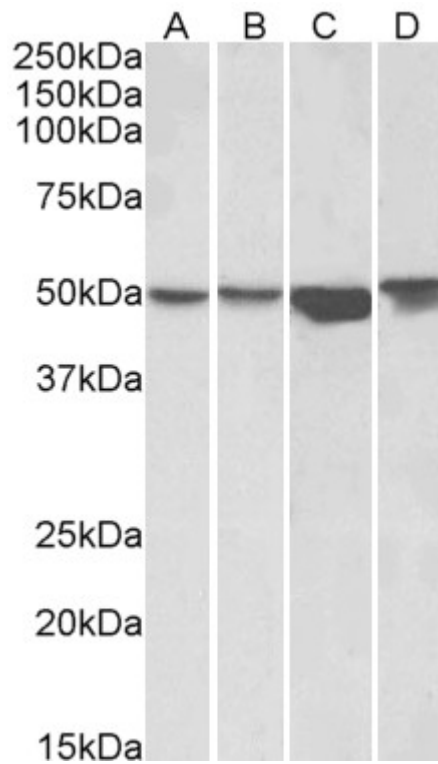
Species Reactivity

Tested: Human, Mouse

Expected from sequence similarity: Human, Mouse, Rat, Dog, Cow



EB05120 (0.5 μ g/ml) staining of NIH3T3 lysate (35 μ g protein in RIPA buffer). Primary incubation was 1 hour.
Detected by chemiluminescence.



EB05120 (1 μ g/ml) staining of HEK293 (A), A431 (B), HeLa (C) and Jurkat (D) lysates (35 μ g protein in RIPA buffer). Primary incubation was 1 hour. Detected by chemiluminescence.