

## UK Office

### Everest Biotech Ltd

Cherwell Innovation Centre  
77 Heyford Park  
Upper Heyford  
Oxfordshire  
OX25 5HD  
UK

Enquiries:

[info@everestbiotech.com](mailto:info@everestbiotech.com)

Sales:

[sales@everestbiotech.com](mailto:sales@everestbiotech.com)

Tech support:

[support@everestbiotech.com](mailto:support@everestbiotech.com)

Tel: +44 (0)1869 238326

[www.everestbiotech.com](http://www.everestbiotech.com)

**Research Use Only. Not for  
diagnostic or therapeutic use.**

## EB09753 - Goat Anti-INCA / CARD17 Antibody

Size: 100µg specific antibody in 200µl



### Target Protein

**Principal Names:** INCA, CARD17, caspase recruitment domain family, member 17, Inhibitory CARD, caspase recruitment domain-containing protein 17, caspase-1 inhibitor INCA, inhibitory caspase recruitment domain (CARD) protein, inhibitory caspase recruitment domain protein

**Official Symbol:** INCA

**Accession Number(s):** NP\_001007233.1

**Human GeneID(s):** [440068](#)

### Immunogen

Peptide with sequence C-NHLTTQDSQIVLPS, from the C Terminus of the protein sequence according to NP\_001007233.1.

Please note the [peptide](#) is available for sale.

### Purification and Storage

Purified from goat serum by ammonium sulphate precipitation followed by antigen affinity chromatography using the immunizing peptide.

Supplied at 0.5 mg/ml in Tris saline, 0.02% sodium azide, pH7.3 with 0.5% bovine serum albumin.

Aliquot and store at -20°C. Minimize freezing and thawing.

### Applications Tested

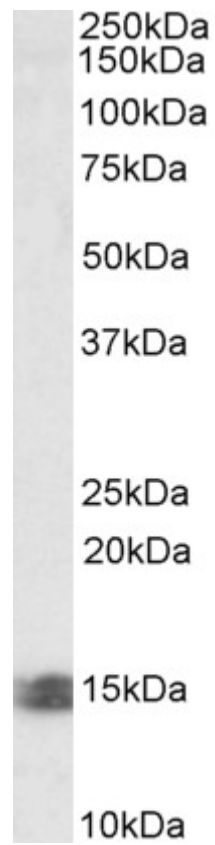
**Peptide ELISA:** antibody detection limit dilution 1:8000.

**Western blot:** Approx 15kDa double band observed in Human Kidney and Lung lysates (calculated MW of 11.9kDa according to NP\_001007233.1). Recommended concentration: 0.5-1.5µg/ml.

### Species Reactivity

**Tested:** Human

**Expected from sequence similarity:** Human



EB09753 (0.5 $\mu$ g/ml) staining of Human Kidney lysate (35 $\mu$ g protein in RIPA buffer). Primary incubation was 1 hour. Detected by chemiluminescence.